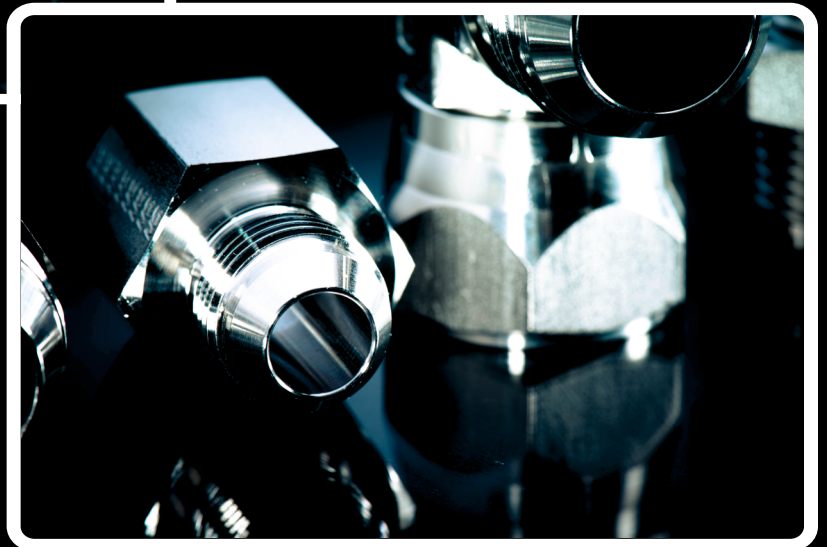


# MCS

HYDRAULICS

*Adattatori - Adaptors*  
*SAE J514 - Iso 8434-2*



*Collezione - Collection*  
*2019*

**INDICE  
INDEX**

*Pag. 6.1 - 6.2 - 6.3 - 6.4 - 6.5 - 6.6*

**INFORMAZIONI SUI PRODOTTI E DATI GENERALI  
General Information**

*Pag. 6.7*

**ACCIAI IMPIEGATI  
TRATTAMENTO DI FINITURA  
Steel Used on all Series  
Cleaning Process**

*Pag. 6.8*

**LUBRIFICAZIONE DEI COMPONENTI  
Lubrication of the components**

*Pag. 6.9*

**TABELLA COMPATIBILITÀ FLUIDI  
Fluids Compatibility table**

*Pag. 6.10*

**TUBI IN ACCIAIO INOSSIDABILE CONSIGLIATI  
Recommended Stainless Steel tubes**

*Pag. 6.11*

**GUARNIZIONI IMPIEGATE  
TEMPERATURE AMMESSE E RIDUZIONI DI PRESSIONE  
Sealing Materials  
Pressure Reductions and Temperature**

*Pag. 6.12*

**RESPONSABILITÀ  
Liability**

*Pag. 6.13*

**COLLAUDO  
Testing**

*Pag. 6.14*

**COPPIE DI SERRAGGIO  
Torque Wrench  
RACCORDI SU TUBAZIONI  
Nut on Tube**

*Pag. 6.15*

**COPPIE DI SERRAGGIO  
Torque Wrench  
RACCORDI SAE J514 CON FILETTO GAS CILINDRICO  
Stud Ends SAE J514 with BSP Thread**

*Pag. 6.16*

**COPPIE DI SERRAGGIO  
Torque Wrench  
RACCORDI SAE J514 CON FILETTO METRICO CILINDRICO  
Stud Ends SAE J514 with Metric Thread**

*Pag. 6.17*

**COPPIE DI SERRAGGIO**  
Torque wrench  
**RACCORDI SAE J514 CON FILETTO UNF/UN-2A**  
Stud Ends SAE J514 with UNF/UN-2A Thread  
Pag. 6.18

**SEDI E FILETTATURE BSP**  
Thread Coupling - BSP Thread

Pag. 6.19

**SEDI E FILETTATURE METRICHE**  
Thread Coupling - Metric Thread

Pag. 6.20

**SEDI E FILETTATURE UNF/UN-2A**  
Thread Coupling - UNF/UN-2A

Pag. 6.21

**SEDI E FILETTATURE NPT**  
Thread Coupling - NPT

Pag. 6.22

**OGIVA PER TUBO**  
METRICO (JS) ED IN POLLICI (JSI)  
SLEEVE FOR 37° COUPLINGS FOR  
METRIC (JS) AND INCHES (JSI)



Cod. JS.. - JSI..

Pag. 6.23

**DADO JIC PER OGIVA**  
NUT FOR 37° COUPLINGS



Cod. JN..

Pag. 6.24

**ADATTATORE MASCHIO**  
BOTH JIC MALE 74° CONE ADAPTOR



Cod. JMA..

Pag. 6.25

**RIDUZIONE MASCHIO/MASCHIO**  
REDUCING ADAPTOR MALE/MALE



Cod. JMRA..

Pag. 6.26

**ADATTATORE MASCHIO/MASCHIO**  
Filetto Gas Cilindrico  
ADAPTOR MALE/MALE  
Thread BSP Parallel



Cod. JBSPMA..

Pag. 6.27

**ADATTATORE MASCHIO/MASCHIO**  
CON GUARNIZIONE INCASSATA  
Filetto Gas Cilindrico  
ADAPTOR MALE/MALE  
WITH CAPTIVE SEAL  
Thread BSP Parallel



Cod. JBSPMA..V

Pag. 6.28

**ADATTATORE MASCHIO/MASCHIO**  
Filetto Gas Conico  
ADAPTOR MALE/MALE  
Thread BSP Taper



Cod. JBSPMA..

Pag. 6.29



**ADATTATORE MASCHIO/MASCHIO**  
Filetto NPT  
**ADAPTOR MALE/MALE**  
Thread NPT

Cod. JNPTMA..

Pag. 6.30



**ADATTATORE MASCHIO/MASCHIO  
CON O'RING**  
Filetto UNF/UN-2A  
**ADAPTOR MALE/MALE WITH O'RING**  
Thread UNF/UN-2A

Cod. JUNFMA..

Pag. 6.31



**ADATTATORE MASCHIO/MASCHIO**  
Filetto Metrico  
**ADAPTOR MALE/MALE**  
Thread Metric

Cod. JMMA..

Pag. 6.32



**ADATTATORE MASCHIO/MASCHIO  
CON GUARNIZIONE INCASSATA**  
Filetto Metrico  
**ADAPTOR MALE/MALE  
WITH CAPTIVE SEAL**  
Thread Metric

Cod. JMMA..V

Pag. 6.33



**PASSAPARETE CON DADO**  
**BULKHEAD ADAPTOR WITH NUT**

Cod. JBMA..

Pag. 6.34



**ADATTATORE  
MASCHIO/FEMMINA FISSA**  
**ADAPTOR MALE/FIXED FEMALE**

Cod. JMFFA..

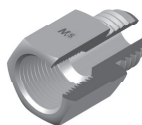
Pag. 6.35



**ADATTATORE  
MASCHIO/FEMMINA FISSA**  
Filetto Gas Cilindrico  
**ADAPTOR MALE/FIXED FEMALE**  
Thread BSP Parallel

Cod. JBSPMFFA..

Pag. 6.36



**ADATTATORE  
MASCHIO/FEMMINA FISSA**  
Filetto NPT  
**ADAPTOR MALE/FIXED FEMALE**  
Thread NPT

Cod. JNPTMFFA..

Pag. 6.37



**ADATTATORE  
MASCHIO/FEMMINA GIREVOLE**  
**JIC MALE/SWIVEL FEMALE ADAPTOR**

Cod. JMSFA..

Pag. 6.38



**ADATTATORE  
MASCHIO/FEMMINA GIREVOLE**  
Filetto Gas Cilindrico  
**MALE/SWIVEL FEMALE ADAPTOR**  
Thread BSP Parallel

Cod. JBSPSFMA..

Pag. 6.39



**ADATTATORE  
MASCHIO/FEMMINA GIREVOLE  
CON GUARNIZIONE INCASSATA**  
Filetto Gas Cilindrico  
**MALE/SWIVEL FEMALE ADAPTOR  
WITH CAPTIVE SEAL**  
Thread BSP Parallel  
Cod. JBSPSFMA..V

Pag. 6.40



**ADATTATORE  
MASCHIO/FEMMINA GIREVOLE**  
Filetto Gas Conico  
**MALE/SWIVEL FEMALE ADAPTOR**  
Thread BSP Taper

Cod. JBSPSFMA..

Pag. 6.41



**ADATTATORE  
MASCHIO/FEMMINA GIREVOLE**  
Filetto NPT  
**MALE/SWIVEL FEMALE ADAPTOR**  
Thread NPT

Cod. JNPTSFMA..

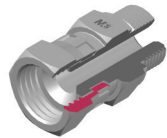
Pag. 6.42



**ADATTATORE MASCHIO/FEMMINA  
GIREVOLE CON O'RING**  
Filetto UNF/UN-2A  
**MALE/SWIVEL FEMALE ADAPTOR  
WITH O'RING**  
BSP Parallel Thread

Cod. JUNFSFMA..

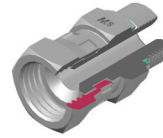
Pag. 6.43



**ADATTATORE  
MASCHIO/FEMMINA GIREVOLE**  
Filetto Metrico  
**MALE/SWIVEL FEMALE ADAPTOR**  
Thread Metric

Cod. JMSFMA..

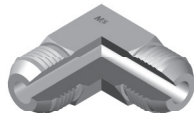
Pag. 6.44



**ADATTATORE  
MASCHIO/FEMMINA GIREVOLE  
CON GUARNIZIONE INCASSATA**  
Filetto Metrico  
**MALE/SWIVEL FEMALE ADAPTOR  
WITH CAPTIVE SEAL**  
Thread Metric

Cod. JMSFMA..V

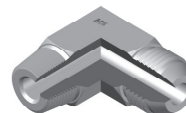
Pag. 6.45



**ADATTATORE A 90°  
MASCHIO**  
**MALE EQUAL ELBOW**

Cod. LJMA..

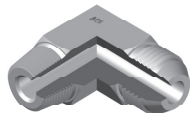
Pag. 6.46



**ADATTATORE A 90°  
MASCHIO**  
Filetto Gas Conico  
**MALE STUD ELBOW**  
Thread BSP Taper

Cod. LJBSPMA..

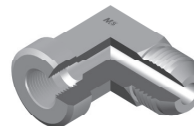
Pag. 6.47



**ADATTATORE A 90°  
MASCHIO**  
Filetto NPT  
**MALE STUD ELBOW**  
Thread NPT

Cod. LJNPTMA..

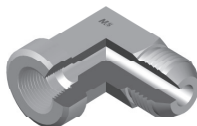
Pag. 6.48



**ADATTATORE A 90°  
MASCHIO/FEMMINA FISSA**  
Filetto Gas Cilindrico  
**MALE/FEMALE STUD ELBOW**  
Thread BSP Parallel

Cod. LJBSPMFFA..

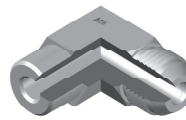
Pag. 6.49



**ADATTATORE A 90°  
MASCHIO/FEMMINA FISSA**  
Filetto NPT  
**MALE/FEMALE STUD ELBOW**  
Thread NPT

Cod. LJNPTMFFA..

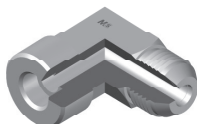
Pag. 6.50



**ADATTATORE A 90° A CODOLO  
STUD STANDPIPE ELBOW**

Cod. LJWMA..

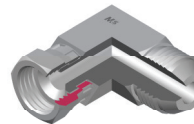
Pag. 6.51



**ADATTATORE A 90°  
A SALDARE FEMMINA**  
**JIC WELDING FEMALE STUD ELBOW**

Cod. LJWMA..T..

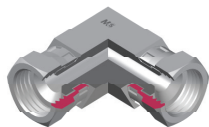
Pag. 6.52



**ADATTATORE A 90°  
MASCHIO FEMMINA GIREVOLE**  
**MALE/SWIVEL FEMALE STUD ELBOW**

Cod. LJMSFA..

Pag. 6.53

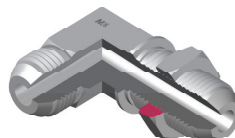


ADATTATORE A 90°  
FEMMINA GIREVOLE  
SWIVEL FEMALE EQUAL ELBOW

ADATTATORE FEMMINA GIREVOLE  
BOTH SWIVEL FEMALE ADAPTOR

Cod. LJSFA..  
Cod. JSFA..

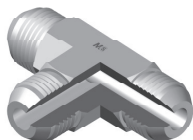
Pag. 6.54



PASSAPARETE A 90° CON DADO  
BULKHEAD MALE ELBOW (WITH NUT)

Cod. LJBMA..

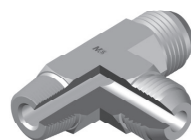
Pag. 6.55



ADATTATORE A "T" MASCHIO  
MALE EQUAL TEE

Cod. TJMA..

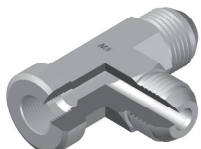
Pag. 6.56



ADATTATORE A "T" LATERALE MAS.  
Filetto Gas Conico e NPT  
MALE STUD BARREL TEE  
Thread BSP Taper and NPT

Cod. TLJSPTMA.. - TLJNPTMA..

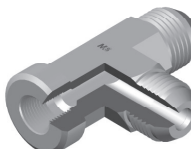
Pag. 6.57



ADATTATORE A "T" LATERALE  
MASCHIO/FEMMINA FISSA  
Filetto Gas Cilindrico  
MALE/FEMALE STUD BARREL TEE  
Thread BSP Parallel

Cod. TLJBSPMFFA..

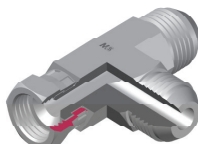
Pag. 6.58



ADATTATORE A "T" LATERALE  
MASCHIO/FEMMINA FISSA  
Filetto NPT  
MALE/FEMALE STUD BARREL TEE  
Thread NPT

Cod. TLJNPTMFFA..

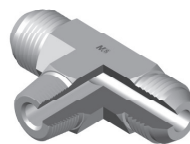
Pag. 6.59



ADATTATORE A "T" LATERALE  
MASCHIO/FEMMINA GIREVOLE  
MALE/SWIVEL FEMALE  
STUD BARREL TEE

Cod. TLJMSFA..

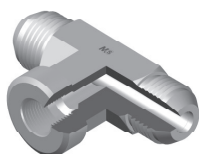
Pag. 6.60



ADATTATORE A "T" CENTRALE  
Filetto Gas Conico e NPT  
MALE STUD BRANCH TEE  
Thread BSP Taper and NPT

Cod. TCJBSPTMA.. - TCJNPTMA..

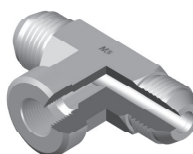
Pag. 6.61



ADATTATORE A "T" CENTRALE  
MASCHIO/FEMMINA FISSA  
Filetto Gas Cilindrico  
MALE/FEMALE STUD BRANCH TEE  
Thread BSP Parallel

Cod. TCJBSPMFFA..

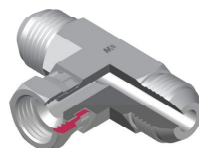
Pag. 6.62



ADATTATORE A "T" CENTRALE  
MASCHIO/FEMMINA FISSA  
Filetto NPT  
MALE/FEMALE STUD BRANCH TEE  
Thread NPT

Cod. TCJNPTMFFA..

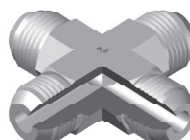
Pag. 6.63



ADATTATORE "T" CENTRALE  
MASCHIO/FEMMINA GIREVOLE  
MALE/SWIVEL FEMALE  
STUD BRANCH TEE

Cod. TCJMSFA..

Pag. 6.64



ADATTATORE A CROCE MASCHIO  
MALE EQUAL CROSS

Cod. CRJMA..

Pag. 6.65



ADATTATORE MASCHIO JIC  
A SALDARE (CON TASCA)  
JIC MALE SOCKETWELD ADAPTOR

Cod. JWMA..T..

Pag. 6.66



TAPPO MASCHIO  
MALE HEAD PLUG

Cod. JMHP..

Pag. 6.67



TAPPO MASCHIO AD ESAGONO  
INCASSATO CON O'RING  
MALE PLUG INTERNAL HEXAGON  
WITH O'RING

Cod. UNFMIP..

Pag. 6.68



TAPPO FEMMINA GIREVOLE  
SWIVEL FEMALE PLUG

Cod. JSFHP..

Pag. 6.69



CONTRODADO PER PASSAPARETE  
LOCKNUT FOR BULKHEAD

Cod. JLN..

Pag. 6.70

## INFORMAZIONE SUI PRODOTTI E DATI GENERALI *General Information*

*I raccordi M.C.S. Hydraulics a norme ISO 8434-2/SAE J514 sono raccordi di tipo meccanico.*

*Questi raccordi garantiscono una perfetto collegamento tra circuiti fluidodinamici, grazie alla tenuta metallo su metallo di due superfici coniche.*

*La perfetta conicità delle svasature garantisce una indeformabilità dei componenti. grazie a queste sue caratteristiche, questo raccordo può essere impiegato ovunque vengano richieste prestazioni importanti.*

*M.C.S. Hydraulics couplings, realized according to ISO 8434-2/SAE J514, are mechanical couplings.*

*They guarantee a perfect connection among fluid-dynamic circuits, thanks to metal to metal sealing between two taper parallel couplings.*

*The perfect taper of the countersinks guarantees inalterability to the components. Thanks to its features, this coupling can be used in every important performance.*



## ACCIAI IMPIEGATI

### Steel Used on all Series

<b>Componenti</b> <i>Components</i>	<b>Materiale - Material</b>		<b>Normativa</b> <i>Reference Norm.</i>
<b>Anello - Ring</b>	X6CrNiMoTi17-12-2 (1,4571)	X2CrNiMoTi17-12-2 (1,4404)	DIN 17440
			EN 10088
<b>Dado - Nut</b>	X6CrNiMoTi17-12-2 (1,4571)	X2CrNiMoTi17-12-2 (1,4404)	DIN 17440
			EN 10088
<b>Corpo da barra</b> <b>Straight Body</b>	X6CrNiMoTi17-12-2 (1,4571)	X2CrNiMoTi17-12-2 (1,4404)	DIN 17440
			EN 10088
<b>Corpo forgiato</b> <b>Forged Body</b>	X6CrNiMoTi17-12-2 (1,4571)	X2CrNiMoTi17-12-2 (1,4404)	DIN 17440
			EN 10088

## TRATTAMENTO DI FINITURA

### Cleaning Process

#### **Processo di Lavaggio ad Ultrasuoni:**

*Tutti gli articoli prodotti dalla M.C.S. Hydraulics sono sottoposti ad un trattamento di lavaggio ed asciugatura ad ultrasuoni.*

*La M.C.S. Hydraulics utilizza un sistema di vasche di lavaggio ad ultrasuoni doppia frequenza con moduli di risciacquo ed asciugatura; le bolle di cavitazione generate dalle onde ultrasoniche, consentono la rimozione di impurità e residui, come polvere, olii, grassi, trucioli e bave di lavorazione che aderiscano alla superficie metallica, senza peraltro intaccare il materiale stesso.*

*La tecnologia del lavaggio con ultrasuoni è molto diffusa come sistema per la pulizia di gioielleria, nonché di dispositivi medici ed odontoiatrici e viene sempre più spesso utilizzata per il lavaggio industriale: al termine di tale processo il raccordo si presenta brillante, completamente pulito e sterilizzato e soprattutto si presta ad essere utilizzato per svariate applicazioni particolari.*

#### **Ultrasonic Cleaning:**

*Each item produced by M.C.S. Hydraulics is subjected to an ultrasonic cleaning treatment. M.C.S. employs a cleaning device that uses Ultrasonic dual frequency waves and an appropriate cleaning*

*solvent, to clean each and every product.*

*Cavitation bubbles induced by the Ultrasound waves, act on a number of contaminants (Such as dirt, dust, grease etc. ) adhering to metal.*

*This action also penetrates blind holes, cracks, and recesses; the intention is to remove all traces of contamination from surface .*

*Ultrasonics are used for industrial cleaning, but also in many medical and dental techniques: at the end of this process, fittings are bright, completely cleaned, sterilized and ready to be used even for very particular applications.*

## LUBRIFICAZIONE DEI COMPONENTI

### *Lubrication of the components*

*Per un corretto impiego dei nostri adattatori, è necessario eseguire una corretta lubrificazione su tutti i componenti da montare. Il lubrificante che vi consigliamo rappresenta l'ultima generazione di lubrificanti sintetici, esso è costituito da particelle ultrafini di lubrificanti solidi inorganici, il tutto in un composto sintetico che vi permetterà di impiegarlo con temperature e pressioni estremamente elevate, infatti, non solidificherà nell'impiego tra -34°C e 1204°C e garantirà una tenuta ottimale fino a 4730 kg/cm<sup>2</sup>. Inoltre, è ecologico in quanto non contiene metalli pesanti velenosi che danneggerebbero il personale che vi entrerebbe in contatto. Il nostro ufficio tecnico sarà a vostra completa disposizione per qualsiasi informazione tecnica relativa al suddetto lubrificante.*

*It is necessary a correct lubrication of each component to use our adapters correctly. The lubricant we recommend belongs to the latest generation of synthetic lubricants; it is formed by a synthetic compound of very small particles of solid inorganic lubricants. It can be used at extremely high temperatures and pressures; in fact it does not solidify between -34°C and 1204°C and it guarantees an optimum seal until 4730 kg/cm<sup>2</sup>. Besides, it is ecological because it does not contain noxious heavy metal which could be dangerous for people who come in contact with it. Our technical office will be at your disposal for further technical information.*

# TABELLA COMPATIBILITÀ FLUIDI

## Fluids Compatibility table

Fluido	Acciaio Inox	NBR	VITON®	Fluido	Acciaio Inox	NBR	VITON®
Acetilene	O	N	N	Gas Naturale Non Trattato	O	N	N
Acetone	O	N	N	Gasolio	O	O	O
Acido Cloridrico	S	N	O	Glicerina	O	O	O
Acido Fosforico	N	N	S	Glicole	O	O	O
Acido Nitrico	S	N	S	Idrogeno	O	O	O
Acido Solforico	S	N	O	Iodio	O	S	O
Acqua	S	N	O	Kerosene	O	O	O
Acqua Distillata	O	O	O	Metano	O	O	O
Acqua Marina	S	O	O	Metanolo	O	O	O
Acqua Ossigenata	O	N	O	Nafta	O	O	O
Acquaragia	O	O	O	Neon	O	O	O
Ammoniaca Gassosa, Fredda	O	O	N	Olio	O	O	O
Ammoniaca Liquida	O	S	N	Olio da Riscaldamento	O	O	N
Anidride Carbonica	O	O	S	Olio dei Freni	O	N	O
Argo	O	O	O	Olio della Trasmissione	O	O	O
Aria	O	O	O	Olio Minerale	O	O	O
Aria compressa	O	O	O	Olio Minerale Naturale	O	S	O
ASTM-Oil, 1	O	O	O	Olio per Comandi Idraulici	O	O	O
ASTM-Oil, 2	O	O	O	Olio Vegetale	O	O	O
ASTM-Oil, 3	O	O	O	Ossido di Carbonio	O	O	N
Azoto	O	O	O	Ossigeno	O	N	O
Benzene	O	N	O	Ozono	O	N	O
Biossido di Zolfo	O	N	O	Pentano	O	O	O
Bisolfuro di Carbonio	O	N	O	Pentano Liquido	O	O	O
Butano	O	O	O	Propano	O	O	O
Cloro	O	N	O	Silicone	O	O	O
Elio	O	O	O	Stirene	O	S	O
Etano	O	O	N	Toluolo	O	N	S
Etere	O	O	N	Trielina	S	N	S
Gas Combustibile	O	O	S	Vapore	O	N	N
Gas Naturale	O	O	O	Xilolo	O	N	O

Legenda: O = Ottimo; S = Sufficiente; N = Non Raccomandato.

Legend : O = Excellent ; S = Sufficient ; N = Not Recommended

VITON® è un marchio registrato dalla DuPont Dow Elastomers

VITON® is a DuPont Dow Elastomers Trade Mark

## TUBI IN ACCIAIO INOSSIDABILE CONSIGLIATI

### Recommended Stainless Steel Tubes

Si consiglia l'uso di tubi in acciaio inossidabile calibrati e lucidati, trafilati a freddo senza saldatura, in AISI 316 Ti secondo la norma DIN 17458 o ASTM A269, con durezza massima sul diametro esterno di 85HRB. Le pressioni indicate nella tabella a seguire sono state rilevate in condizioni di carico costante e temperatura compresa tra i -20°C e i 120°C

The use of seamless stainless steel Aisi 316Ti (EN 1.4571) cold drawn, brightened tubes, according to DIN 17458 or ASTM A269, with maximum hardness on outer diameter of 85HRB is recommended. Pressure shown in the following table has been noticed in conditions of constant load and temperature between -20°C and 120°C.

Ø Tubo mm	Tolleranza mm	Spessore mm	Pressione DIN 2413-1 Statico bar	Peso Kg/m	Ø Tubo mm	Tolleranza mm	Spessore mm	Pressione DIN 2413-1 Statico bar	Peso Kg/m		
4	±0,1	0,5	326	0,048	18	±0,08	1,5*	245	0,619		
		1	544	0,076			2	326	0,801		
6	±0,1	1	406	0,125			2,5	409	0,971		
		1,5	572	0,169			3	426	1,128		
8	±0,1	2	721	0,200			20	±0,08	2**	294	0,902
		1	347	0,225					2,5	368	1,095
		1,5	449	0,244	3	389			1,277		
		2	572	0,301	3,5	444			1,446		
		2,5	686	0,344	4	498			1,602		
		1	294	0,225	2**	267			1,001		
10	±0,1	1,5	389	0,319	22	±0,08	2,5	334	1,220		
		2	498	0,401			3	401	1,427		
		2,5	601	0,469			2**	236	1,151		
		3	694	0,526			2,5	294	1,408		
12	±0,08	1*	245	0,275	25	±0,08	3	352	1,653		
		1,5	368	0,394			4	411	2,104		
		2	426	0,500			4,5	456	2,310		
		2,5	516	0,595	28		±0,08	2**	210	1,301	
		3	601	0,676				2,5	263	1,596	
		3,5	679	0,745				3	315	1,878	
14	±0,08	1,5	315	0,469	30	±0,08	2**	175	1,402		
		2	420	0,601			2,5	245	1,721		
		2,5	452	0,720			3	294	2,028		
		3	529	0,826			4	392	2,604		
		3,5	601	0,920			2**	168	2,222		
15	±0,08	1,5	294	0,507	35	±0,15	2,5	210	2,034		
		2	392	0,651			3	252	2,403		
		3	498	0,902			4	336	3,104		
16	±0,08	1,5**	275	0,544	38	±0,15	3**	232	2,628		
		2	368	0,702			4	310	3,405		
		2,5	402	0,845			5	387	4,131		
		3	471	0,977			3**	210	2,929		
					42	±0,2	4	280	3,806		

\* Per tubi a norma DIN 2353 utilizzare la boccia di rinforzo adeguata.

\*\* Utilizzare solo con raccordi a norma SAE J514.

\*For tubes according to DIN 2353 it is necessary to use a support sleeve.

\*\*You must use them only with fittings according to SAEJ514.

## GUARNIZIONI IMPIEGATE

### Sealing Materials :

*Le guarnizioni impiegate, possono essere sia in NBR ed hanno una temperatura di esercizio compresa tra i -35°C ed i 100°C e durezza 85±5 Shore, sia in VITON® se dovessero sostenere temperature di esercizio più elevate comprese tra i -25°C ed i 200°C e durezza 80±5 Shore. Tali prodotti devono essere stoccati secondo la norma DIN 7716 (Requisiti per l'immagazzinamento di prodotti in gomma e caucciù).*

*Seals used can be in NBR (Nitrile Rubber), so they have an operating temperature from -35°C to 100°C and hardness 85± 5 Shore, and in Viton® in case they are used for highest temperature from -25°C to 200°C and hardness 80±5 Shore. These products must be stored according to DIN 7716 (This is essential for the stocking of rubber products).*

## TEMPERATURE AMMESSE E RIDUZIONI DI PRESSIONE

### Pressure reductions and Temperature

*Acciaio inossidabile da -60°C a 200°C secondo ISO 8434.*

*La riduzione della pressione di esercizio sui raccordi in acciaio inossidabile 1.4571 deve essere applicata in funzione della temperatura di esercizio riscontrata, secondo la NORMA ISO 8434. In caso di sistema con più componenti i parametri devono essere calcolati sul componente più debole.*

*Stainless steel from -60°C to 200°C according to ISO 8434.*

*The reduction of the operating pressure on stainless steel fittings 14571 must be applied according to the operating temperature, in accordance with ISO 8434. For systems consisting of more components the parameters must be calculated on the weakest component.*

<i>Tipo di acciaio impiegato</i> Type of Steel used	<i>Temperatura di esercizio</i> Operating temperature	<i>Riduzione della pressione di esercizio</i> Oper. Press.Reduc.
1,4571	≥ 50°C	-4%
1,4571	≥100°C	-11%
1,4571	≥200°C	-20%

# RESPONSABILITÀ

## Liability

### PRESCRIZIONI DA RISPETTARE

#### Warning

- *Rispettare tutte le indicazioni di montaggio contenuto in questo catalogo.*
  - *Utilizzare per le connessioni, tubi di qualità come da «tabella tubi consigliati»*
  - *Sui tubi a pareti sottili applicare boccole di rinforzo.*
  - *Utilizzare solo componenti M.C.S. per le connessioni e non alterare il prodotto originale M.C.S. .*
  - *Lubrificare sempre tutti i componenti come indicato nelle istruzioni di montaggio.*
  - *Rispettare la pressioni e le temperature indicate nel catalogo.*
  - *Il non utilizzo delle suddette prescrizioni, oltre ad alterare la sicurezza funzionale dei nostri prodotti, esclude tutti i diritti di garanzia.*
- *Observe assembly instructions contained in this catalogue;*
  - *Observe Tube Recommendations (See page 5: Recommended stainless steel tubes);*
  - *In case of assembly with thin walled tubes, apply support sleeves;*
  - *For complete safety, use only M.C.S. components; do not alter/modify M.C.S.'s products;*
  - *Components must be lubricated as seen in the Assembly Instructions section;*
  - *Observe pressure and temperatures as indicated;*
  - *There is no functional safety of our products and no warranty rights without observing the above described instructions.*

### RESPONSABILITÀ PRODOTTO

#### Product Liability

*I prodotti M.C.S. sono garantiti esenti da difetti di lavorazione e di materiale. Tale garanzia verrà applicata al prodotto effettivamente difettoso che presenti non conformità o mal funzionamenti non riscontrabili al momento dell'acquisto, purché lo stesso sia utilizzato esattamente come riportato nelle nostre istruzioni di montaggio e comunque entro e non oltre sei mesi dalla data di acquisto del materiale.*

*M.C.S.'s products are guaranteed without manufacturing or material fault. This warranty will be applied to the product effectively faulty, which presents a bad functioning not showed at the moment of the purchase and only if it has been used as recommended in our assembly instructions and within six months after the purchase date.*

## COLLAUDO Testing

*I raccordi M.C.S. sono costruiti rispettando integralmente la norma ISO 8434-2 di riferimento. Le pressioni riportate nel presente catalogo sono quelle massime consentite collaudate con un fattore di sicurezza 4:1 sia per le connessioni tubo-tubo, che per i terminali cilindrici con guarnizione incassata. Il fattore di sicurezza scende a 2.5:1 sui terminali cilindrici con tenuta in metallo su metallo e sui terminali a filettatura conica. Inoltre tutta la gamma di adattatori prodotta dalla M.C.S. Hydraulics è stata collaudata fino alla pressione di scoppio del tubo rigido. La M.C.S. Hydraulics S.r.l. dispone, per le prove interne, di un banco per prove in pressioni di tubi che consente di eseguire test di tenuta, scoppio ed a pressione pulsante fino a 4000 Bar; su richiesta è possibile effettuare il collaudo dei componenti ordinati ed ottenere il rilascio del certificato delle prove eseguite secondo la ISO 8434-5: è possibile infine richiedere che tali prove vengano eseguite alla presenza di ispettori di Enti Certificatori; tra i quali si citano (a titolo esemplificativo e non esaustivo): Rina, Lloyd's, Register, DNV etc.*

*M.C.S.'s Din compression couplings are completely manufactured in accordance with ISO 8434-2 standards.*

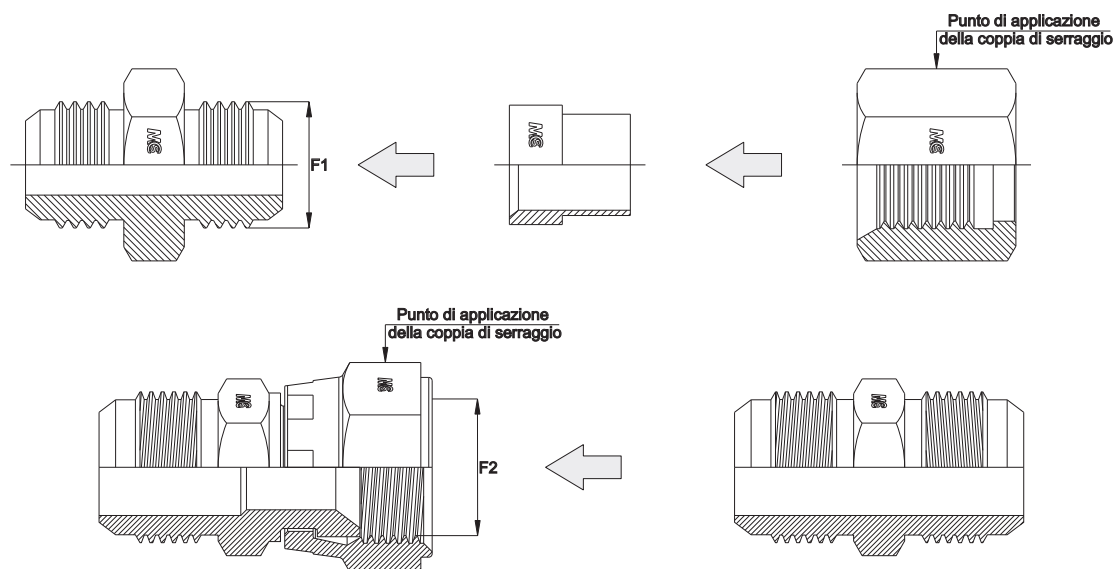
*Pressure values shown in this catalogue are those maximum allowed and tested considering the security factor 4:1, it is intended for tube to tube connections and parallel stud couplings with captive seal. The security factor is 2.5:1 for metal to metal sealing parallel and taper parallel threaded stud couplings. Besides, all couplings manufactured by M.C.S. Hydraulics have been tested up to tube burst pressure.*

*A test bench is available to provide in-house static, burst and pulsing pressure tests up to 4000 Bar. On request it is possible to test the components and to issue certificates according to ISO 8434-5.*

*It is also possible to have these tests performed in the presence of qualified inspectors: Rina, Lloyd's Register, DNV for instance.*

# COPPIE DI SERRAGGIO - Assembly Torques

## Raccordi su Tubazioni - Nut on Tube



F1/F2	N MIN/MAX (NM)	TUBO
7/16"	15/16	6 - 1/4"
1/2"	19/21	8 - 5/16"
9/16"	24/28	10 - 3/8"
3/4"	49/50	12 - 1/2"
7/8"	77/85	14 - 15 - 16 - 5/8"
1" 1/16	107/119	18 - 20 - 3/4"
1" 5/16	147/154	25 - 1"
1" 5/8	172/181	30 - 32 - 1" 1/4
1" 7/8	215/226	38 - 1" 1/2

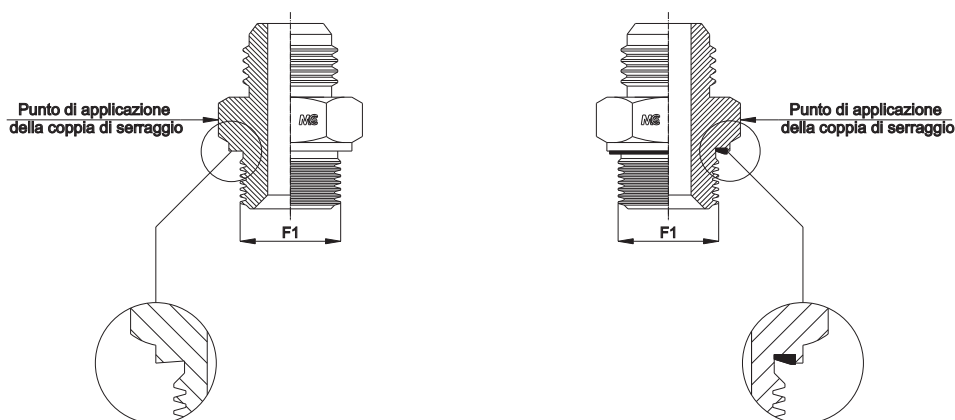
F1 - JIC



# COPPIE DI SERRAGGIO - Assembly Torques

## Raccordi Sae J514 con Filetto Gas Cilindrico

### Stud Ends SAE J514 with BSP Thread



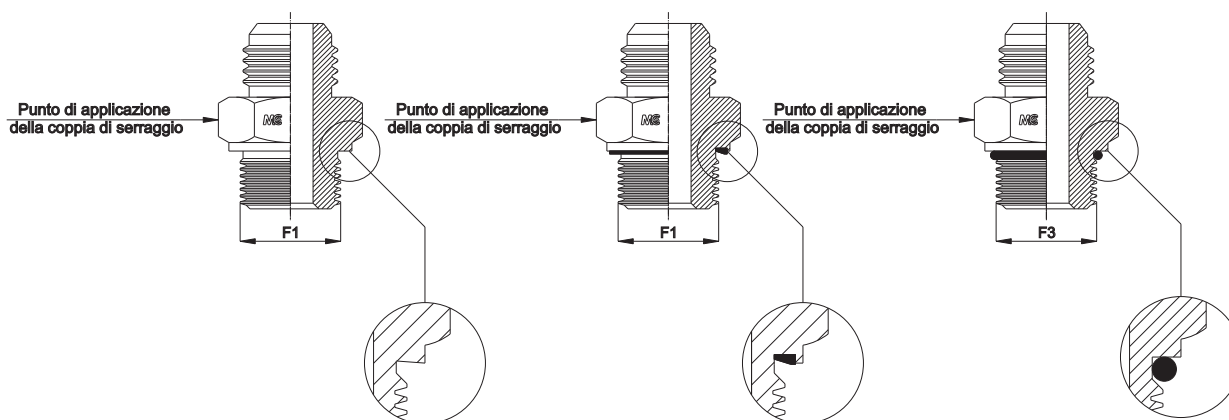
F1	N MAX (NM)
G 1/8"	20
G 1/4"	45
G 3/8"	70
G 1/2"	85
G 3/4"	170
G 1"	330
G 1"1/4	430
G 1"1/2	510

F1 - Filetto Gas Cilindrico/Filetto Gas Conico - Thread BSP Parallel/Thread BSP Taper

# COPPIE DI SERRAGGIO - Assembly Torques

## Raccordi Sae J514 con Filetto Metrico Cilindrico

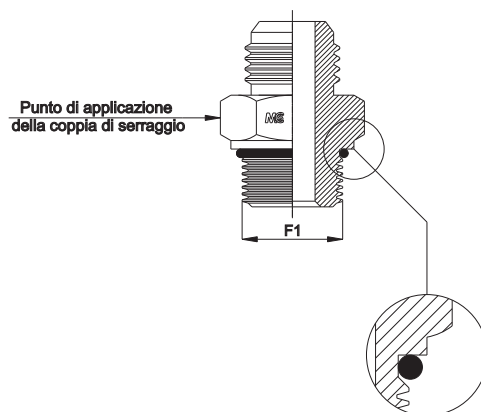
### Stud Ends SAE J514 with METRIC Thread



F1	N MAX (NM)	F3	N MAX (NM)
10x1	20	10x1	15
12x1,5	30	12x1,5	25
14x1,5	45	14x1,5	30
16x1,5	55	16x1,5	35
18x1,5	70	18x1,5	40
20x1,5	105	20x1,5	50
22x1,5	120	22x1,5	55
27x2	170	27x2	85
33x2	330	33x2	140
42x2	430	42x2	180

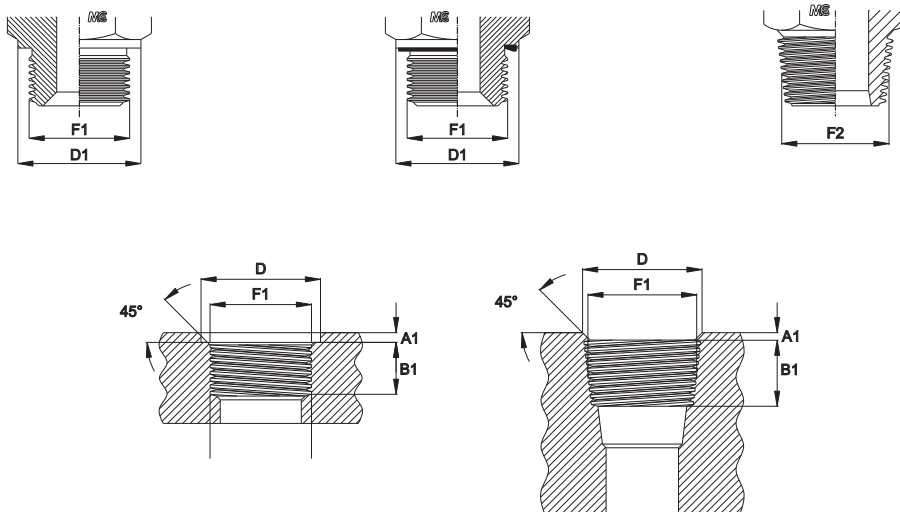
# COPPIE DI SERRAGGIO - Assembly Torques

## Raccordi Sae J514 con Filetto UNF/UN-2A Stud Ends SAE J514 with UNF/UN-2A Thread



F1 ISO 11926-3	N MAX (NM)
7/16"	20
1/2"	25
9/16"	30
3/4"	45
7/8"	55
1" 1/16	85
1" 5/16	130
1" 5/8	170

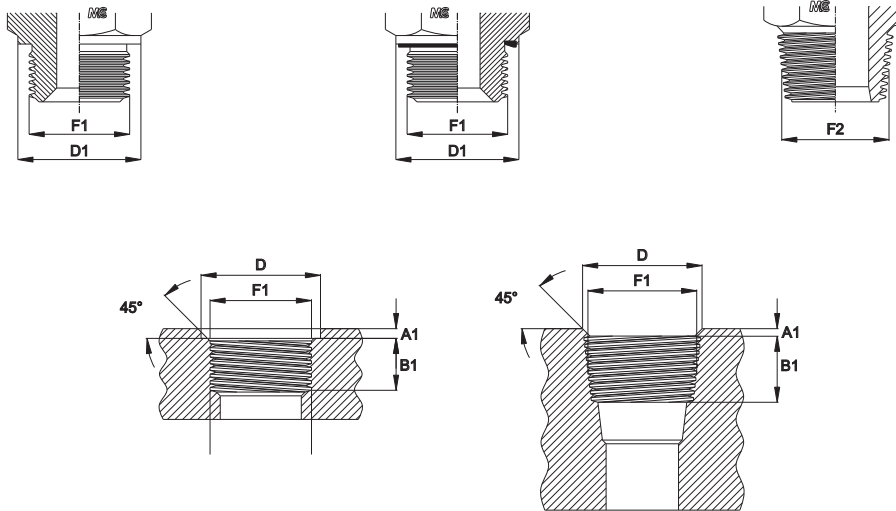
# SEDI E FILETTATURE BSP THREAD COUPLING - BSP THREAD



F1	F2	A1 MAX	B1 MIN	D	D1	D2	B2 MIN	TUBO	SERIE
1/8"	1/8"	1	8	15	14	14	5,5	6	L
1/4"	1/4"	1,5	12	19	18	18,9	8,5	8	L
1/4"	1/4"	1,5	12	19	18	18,9	8,5	10	L
3/8"	3/8"	1,5	12	23	22	22	8,5	12	L
1/2"	1/2"	2	12	27	26	26,9	10,5	15	L
1/2"	1/2"	2,5	14	27	26	26,9	10,5	18	L
3/4"	3/4"	2,5	16	33	32	32	13	22	L
1"	1"	2,5	18	40	39	39,9	16	28	L
1" 1/4	1" 1/4	2,5	20	50	49	49,9	17	35	L
1" 1/2	1" 1/2	2,5	22	56	55	55	17	42	L
1/4"	1/4"	1,5	12	19	18	18,9	8,5	6	S
1/4"	1/4"	1,5	12	19	18	18,9	8,5	8	S
3/8"	3/8"	1,5	12	23	22	22	8,5	10	S
3/8"	3/8"	2	12	23	22	22	8,5	12	S
1/2"	1/2"	2	14	27	26	26,9	10,5	14	S
1/2"	1/2"	2,5	14	27	26	26,9	10,5	16	S
3/4"	3/4"	2,5	16	33	32	32	13	20	S
1"	1"	2,5	18	40	39	39,9	16	25	S
1" 1/4	1" 1/4	2,5	20	50	49	49,9	17	30	S
1" 1/2	1" 1/2	2,5	22	56	55	55	17	38	S

F1 - Filetto Gas Cilindrico - Thread BSP Parallel  
F2 - Filetto Gas Conico - Thread BSP Taper

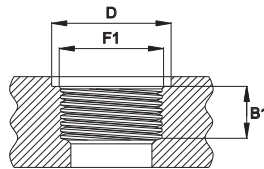
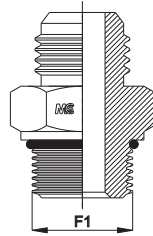
# SEDI E FILETTATURE METRICHE THREAD COUPLING - METRIC THREAD



F1	F2	A1 MAX	B1 MIN	D	D1	D2	B2 MIN	TUBO	SERIE
10x1	10x1	1	8	15	14	14	5,5	6	L
12x1,5	12x1,5	1,5	12	18	17	17	8,5	8	L
14x1,5	14x1,5	1,5	12	20	19	19	8,5	10	L
16x1,5	16x1,5	1,5	12	22	21	21,9	8,5	12	L
18x1,5	18x1,5	2	12	24	23	23,9	8,5	15	L
22x1,5	22x1,5	2,5	14	28	27	27	10,5	18	L
26x1,5		2,5	16	32	31	31,9		22	L
33x2		2,5	18	40	39	39,9		28	L
42x2		2,5	20	50	49	49,9		35	L
48x2		2,5	22	56	55	55		42	L
12x1,5	12x1,5	1,5	12	18	17	17	8,5	6	S
14x1,5	14x1,5	1,5	12	20	19	19	8,5	8	S
16x1,5	16x1,5	1,5	12	22	21	21,9	8,5	10	S
18x1,5	18x1,5	2	12	24	23	23,9	8,5	12	S
20x1,5	20x1,5	2	14	26	25	25,9	10,5	14	S
22x1,5	22x1,5	2,5	14	28	27	27	10,5	16	S
27x2		2,5	16	33	32	32		20	S
33x2		2,5	18	40	39	39,9		25	S
42x2		2,5	20	50	49	49,9		30	S
48x2		2,5	22	56	55	55		38	S

F1 - Filetto Metrico Cilindrico - Thread Metric Parallel  
F2 - Filetto Metrico Conico - Thread Metric Taper

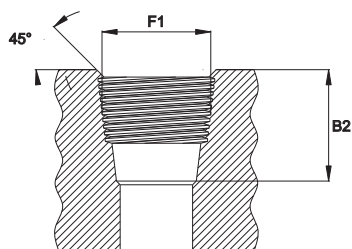
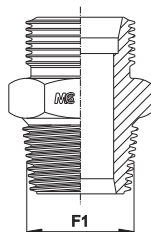
# SEDI E FILETTATURE UNF/UN-2A THREAD COUPLING - UNF/UN-2A



F1	A1 MAX	B1 MIN	D	D1	a
7/16"	1,6	11,5	21	15,8	12°
1/2"	1,6	11,5	23	16,2	12°
9/16"	1,6	12,7	25	17,7	12°
3/4"	2,4	14,3	30	23	15°
7/8"	2,4	16,7	34	27	15°
1" 1/16	2,4	19	41	32	15°
1" 5/16	3,2	19	49	38,1	15°
1" 5/8	3,2	19	58	48	15°

F1 - UNF/UN-2A

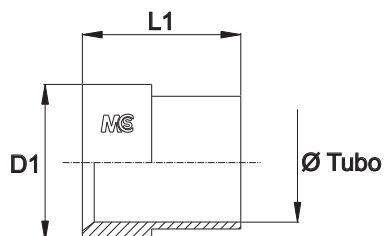
# SEDI E FILETTATURE NPT THREAD COUPLING - NPT



NPT	MIN
F1	B2
1/8"	1,6
1/4"	1,6
3/8"	1,6
1/2"	2,4
3/4"	2,4
1"	2,4
1" 1/4	3,2
1" 1/2	3,2

F1 - NPT

# OGIVA PER TUBO METRICO (JS) ED IN POLLICI (JSI) SLEEVE FOR 37° COUPLINGS FOR METRIC (JS) AND INCHES (JSI) TUBE

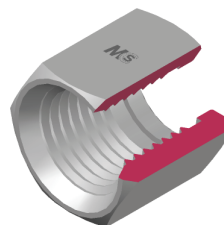
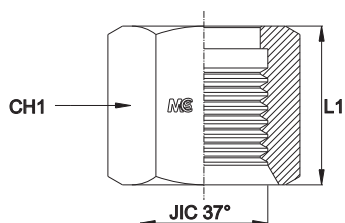


Serie Series	Bar W.P.	Codice Code	Ø Est. Tubo Metric Tube OD	Ø Est. Tubo in Pollici Inch Tube OD	L1	D1	
UNIVERSALE UNIVERSAL	450	JS06	6		10,4	9,70	
	450	JS08	8	5/16"	11,2	11,25	
	350	JS10	10			12,7	12,70
		JS12	12			14,2	17,30
		JS14	14			16,8	20,20
		JS15	15			16,8	20,20
		JS16	16	5/8"		16,8	20,20
		JS20	20			17,3	24,65
	290	JS25	25			19,8	31,00
	240	JS28	28			23,1	38,90
JS30		30			23,1	38,90	
JS32		32			23,1	38,90	
JS38		38	1" 1/2		28,4	45,25	
140	JS50	50			30,2	61,15	

Serie Series	Bar W.P.	Codice Code	Ø Est. Tubo in Pollici Inch Tube OD	L1	D1
UNIVERSALE UNIVERSAL	450	JSI04	1/4"	10,4	9,70
	350	JSI06	3/8"	12,7	12,70
		JSI08	1/2"	14,2	17,30
		JSI12	3/4"	17,3	24,65
	290	JSI16	1"	19,8	31,00
	240	JSI20	1" 1/4	23,1	38,90
	105	JSI32	2"	30,2	61,15

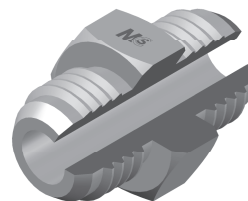
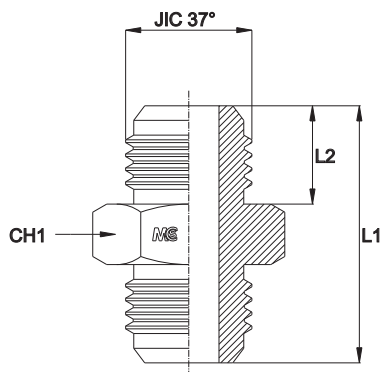


## DADO JIC PER OGIVA NUT FOR 37° COUPLINGS



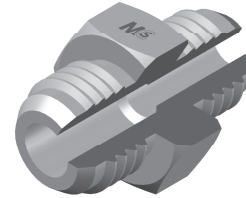
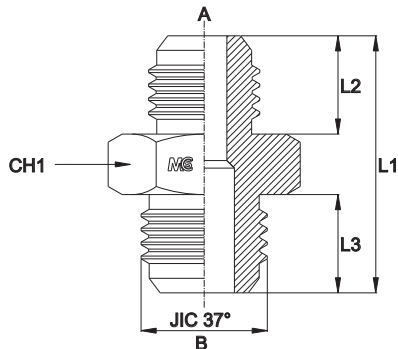
Serie Series	Bar W.P.	Codice Code	Ø Est. Tubo M Tube O.D. M	Ø Est. Tubo W Tube O.D. W	JIC 37°	L1	CH1
UNIVERSALE UNIVERSAL	450	JN07	6	1/4"	7/16"-20	15,8	14
		JN08	8	5/16"	1/2"-20	17,3	17
	350	JN09	10	3/8"	9/16"-18	18,5	19
		JN12	12	1/2"	3/4"-16	21,6	22
		JN14	14-15-16	5/8"	7/8"-14	24,9	27
	290	JN17	18-20	3/4"	1" 1/16-12	26,2	32
		JN21	25	1"	1" 5/16-12	28,7	41
	240	JN26	28-30		1" 5/8-12	31,2	50
		JN26/2	32	1" 1/4	1" 5/8-12	31,2	50
	105	JN30	35-38	1" 1/2	1" 7/8-12	36,1	60
JN40		50	2"	2" 1/2-12	44,5	70	

## ADATTATORE MASCHIO BOTH JIC MALE 74° CONE ADAPTOR



Serie Series	Bar W.P.	Codice Code	Ø Est. Tubo M Tube O.D. M	Ø Est. Tubo W Tube O.D. W	JIC 37°	L1	L2	CH1
UNIVERSALE UNIVERSAL	450	JMA0707	6	1/4"	7/16"-20	35,0	14,0	14
		JMA0808	8	5/16"	1/2"-20	35,0	14,0	14
	350	JMA0909	10	3/8"	9/16"-18	36,0	14,1	17
		JMA1212	12	1/2"	3/4"-16	41,0	16,7	22
		JMA1414	14-15-16	5/8"	7/8"-14	48,0	19,3	24
	290	JMA1717	18-20	3/4"	1"1/16-12	55,0	21,9	30
		JMA2121	25	1"	1"5/16-12	57,0	23,1	36
	240	JMA2626	28-30-32	1"1/4	1"5/8-12	61,5	24,3	46
		JMA3030	35-38	1"1/2	1"7/8-12	70,0	27,5	50
	105	JMA4040	50	2"	2"1/2-12	86,5	33,9	65

# RIDUZIONE MASCHIO/MASCHIO REDUCING ADAPTOR MALE/MALE



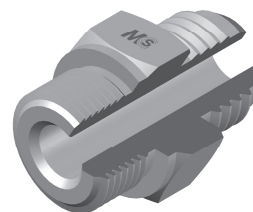
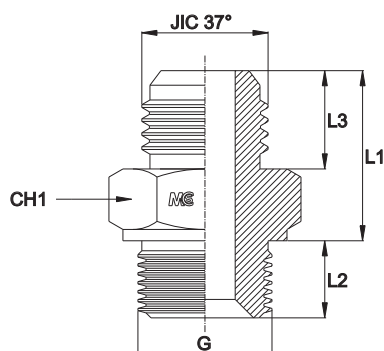
Serie Series	Bar W.P.	Codice Code	Ø Est. Tubo A <sup>M</sup> Tube O.D. A <sup>M</sup>	Ø Est. Tubo B <sup>M</sup> Tube O.D. B <sup>M</sup>	Ø Est. Tubo A <sup>W</sup> Tube O.D. A <sup>W</sup>	Ø Est. Tubo B <sup>W</sup> Tube O.D. B <sup>W</sup>	JIC 37° A	JIC 37° B	L1	L2	L3	CH1
UNIVERSALE UNIVERSAL	450	JMRA0807	6	8	1/4"	5/16"	7/16"-20	1/2"-20	35,0	14,0	14,0	14
		JMRA0907	6	10	1/4"	3/8"	7/16"-20	9/16"-18	35,9	14,0	14,1	17
		JMRA0908	8	10	5/16"	3/8"	1/2"-20	9/16"-18	35,9	14,0	14,1	17
		JMRA1207	6	12	1/4"	1/2"	7/16"-20	3/4"-16	38,3	14,0	16,7	22
		JMRA1208	8	12	5/16"	1/2"	1/2"-20	3/4"-16	38,3	14,0	16,7	22
		JMRA1209	10	12	3/8"	1/2"	9/16"-18	3/4"-16	38,4	14,1	16,7	22
		JMRA1407	6	14-15-16	1/4"	5/8"	7/16"-20	7/8"-14	42,7	14,0	19,3	24
		JMRA1408	8	14-15-16	5/16"	5/8"	1/2"-20	7/8"-14	42,7	14,0	19,3	24
		JMRA1409	10	14-15-16	3/8"	5/8"	9/16"-18	7/8"-14	42,8	14,1	19,3	24
		JMRA1412	12	14-15-16	1/2"	5/8"	3/4"-16	7/8"-14	45,4	16,7	19,3	24
		JMRA1707	6	18-20	1/4"	3/4"	7/16"-20	1"1/16-12	47,1	14,0	21,9	30
		JMRA1708	8	18-20	5/16"	3/4"	1/2"-20	1"1/16-12	47,1	14,0	21,9	30
	JMRA1709	10	18-20	3/8"	3/4"	9/16"-18	1"1/16-12	47,2	14,1	21,9	30	
	JMRA1712	12	18-20	1/2"	3/4"	3/4"-16	1"1/16-12	49,8	16,7	21,9	30	
	JMRA1714	14-15-16	18-20	5/8"	3/4"	7/8"-14	1"1/16-12	52,4	19,3	21,9	30	
	290	JMRA2107	6	25	1/4"	1"	7/16"-20	1"5/16-12	47,9	14,0	23,1	36
		JMRA2108	8	25	5/16"	1"	1/2"-20	1"5/16-12	47,9	14,0	23,1	36
		JMRA2109	10	25	3/8"	1"	9/16"-18	1"5/16-12	48,0	14,1	23,1	36
		JMRA2112	12	25	1/2"	1"	3/4"-16	1"5/16-12	50,6	16,7	23,1	36
		JMRA2114	14-15-16	25	5/8"	1"	7/8"-14	1"5/16-12	53,2	19,3	23,1	36
		JMRA2117	18-20	25	3/4"	1"	1"1/16-12	1"5/16-12	55,8	21,9	23,1	36
	240	JMRA2607	6	28-30-32	1/4"	1"1/4	7/16"-20	1"5/8-12	51,2	14,0	24,3	46
		JMRA2608	8	28-30-32	5/16"	1"1/4	1/2"-20	1"5/8-12	51,2	14,0	24,3	46
		JMRA2609	10	28-30-32	3/8"	1"1/4	9/16"-18	1"5/8-12	51,3	14,1	24,3	46
		JMRA2612	12	28-30-32	1/2"	1"1/4	3/4"-16	1"5/8-12	53,9	16,7	24,3	46
		JMRA2614	14-15-16	28-30-32	5/8"	1"1/4	7/8"-14	1"5/8-12	56,5	19,3	24,3	46
		JMRA2617	18-20	28-30-32	3/4"	1"1/4	1"1/16-12	1"5/8-12	59,1	21,9	24,3	46
		JMRA2621	25	28-30-32	1"	1"1/4	1"5/16-12	1"5/8-12	60,3	23,1	24,3	46
		JMRA3007	6	35-38	1/4"	1"1/2	7/16"-20	1"7/8-12	56,5	14,0	27,5	50
		JMRA3008	8	35-38	5/16"	1"1/2	1/2"-20	1"7/8-12	56,5	14,0	27,5	50
		JMRA3009	10	35-38	3/8"	1"1/2	9/16"-18	1"7/8-12	56,6	14,1	27,5	50
		JMRA3012	12	35-38	1/2"	1"1/2	3/4"-16	1"7/8-12	59,2	16,7	27,5	50
		JMRA3014	14-15-16	35-38	5/8"	1"1/2	7/8"-14	1"7/8-12	61,8	19,3	27,5	50
	JMRA3017	18-20	35-38	3/4"	1"1/2	1"1/16-12	1"7/8-12	64,4	21,9	27,5	50	
	JMRA3021	25	35-38	1"	1"1/2	1"5/16-12	1"7/8-12	65,6	23,1	27,5	50	
	JMRA3026	28-30-32	35-38	1,1/4"	1"1/2	1"5/8-12	1"7/8-12	66,8	24,3	27,5	50	
	105	JMRA4007	6	50	1/4"	2"	7/16"-20	2"1/2-12	66,6	14,0	33,9	65
		JMRA4008	8	50	5/16"	2"	1/2"-20	2"1/2-12	66,6	14,0	33,9	65
		JMRA4009	10	50	3/8"	2"	9/16"-18	2"1/2-12	66,7	14,1	33,9	65
		JMRA4012	12	50	1/2"	2"	3/4"-16	2"1/2-12	69,3	16,7	33,9	65
		JMRA4014	14-15-16	50	5/8"	2"	7/8"-14	2"1/2-12	71,9	19,3	33,9	65
		JMRA4017	18-20	50	3/4"	2"	1"1/16-12	2"1/2-12	74,5	21,9	33,9	65
		JMRA4021	25	50	1"	2"	1"5/16-12	2"1/2-12	75,7	23,1	33,9	65
		JMRA4026	28-30-32	50	1,1/4"	2"	1"5/8-12	2"1/2-12	76,9	24,3	33,9	65
		JMRA4030	35-38	50	1,1/2"	2"	1"7/8-12	2"1/2-12	80,1	27,5	33,9	65

**ADATTATORE MASCHIO/MASCHIO**

Filetto Gas Cilindrico

**ADAPTOR MALE/MALE**

Thread BSP Parallel



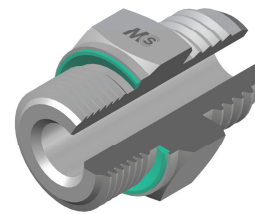
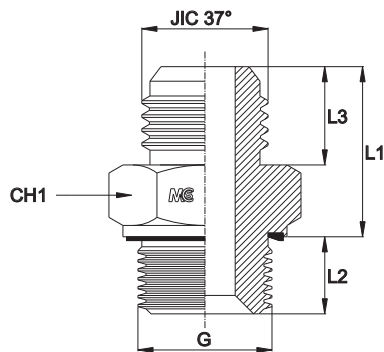
Serie Series	Bar W.P.	Codice Code	Ø Est. Tubo M Tube O.D. M	Ø Est. Tubo W Tube O.D. W	JIC 37°	G	L1	L2	L3	CH1
UNIVERSALE UNIVERSAL	350	JBSPMA0702	6	1/4"	7/16"-20	1/8"	22,5	8,0	14,0	14
		JBSPMA0704	6	1/4"	7/16"-20	1/4"	22,5	11,0	14,0	19
		JBSPMA0706	6	1/4"	7/16"-20	3/8"	23,5	12,0	14,0	22
		JBSPMA0708	6	1/4"	7/16"-20	1/2"	23,5	14,0	14,0	27
		JBSPMA0802	8	5/16"	1/2"-20	1/8"	22,5	8,0	14,0	14
		JBSPMA0804	8	5/16"	1/2"-20	1/4"	22,5	11,0	14,0	19
		JBSPMA0806	8	5/16"	1/2"-20	3/8"	23,5	12,0	14,0	22
		JBSPMA0808	8	5/16"	1/2"-20	1/2"	23,5	14,0	14,0	27
		JBSPMA0902	10	3/8"	9/16"-18	1/8"	23,4	8,0	14,1	17
		JBSPMA0904	10	3/8"	9/16"-18	1/4"	23,4	11,0	14,1	19
		JBSPMA0906	10	3/8"	9/16"-18	3/8"	23,6	12,0	14,1	22
		JBSPMA0908	10	3/8"	9/16"-18	1/2"	23,6	14,0	14,1	27
		JBSPMA1204	12	1/2"	3/4"-16	1/4"	25,8	12,0	16,7	22
		JBSPMA1206	12	1/2"	3/4"-16	3/8"	26,2	12,0	16,7	22
		JBSPMA1208	12	1/2"	3/4"-16	1/2"	26,2	14,0	16,7	27
		JBSPMA1212	12	1/2"	3/4"-16	3/4"	27,7	16,0	16,7	32
	JBSPMA1406	14-15-16	5/8"	7/8"-14	3/8"	30,2	12,0	19,3	24	
	JBSPMA1408	14-15-16	5/8"	7/8"-14	1/2"	30,2	14,0	19,3	27	
	JBSPMA1412	14-15-16	5/8"	7/8"-14	3/4"	30,7	16,0	19,3	32	
	JBSPMA1416	14-15-16	5/8"	7/8"-14	1"	32,3	19,0	19,3	41	
	JBSPMA1706	18-20	3/4"	1"1/16-12	3/8"	34,6	12,0	21,9	30	
	JBSPMA1708	18-20	3/4"	1"1/16-12	1/2"	34,6	14,0	21,9	30	
	JBSPMA1712	18-20	3/4"	1"1/16-12	3/4"	35,1	16,0	21,9	32	
	JBSPMA1716	18-20	3/4"	1"1/16-12	1"	35,1	19,0	21,9	41	
	JBSPMA1720	18-20	3/4"	1"1/16-12	1,1/4"	35,1	20,0	21,9	50	
	JBSPMA2112	25	1"	1"5/16-12	3/4"	35,9	16,0	23,1	36	
	JBSPMA2116	25	1"	1"5/16-12	1"	36,1	19,0	23,1	41	
	JBSPMA2120	25	1"	1"5/16-12	1,1/4"	36,1	20,0	23,1	50	
	JBSPMA2124	25	1"	1"5/16-12	1,1/2"	37,6	20,0	23,1	55	
	JBSPMA2616	28-30-32	1"1/4	1"5/8-12	1"	39,2	19,0	24,3	46	
	JBSPMA2620	28-30-32	1"1/4	1"5/8-12	1,1/4"	39,2	20,0	24,3	50	
	JBSPMA2624	28-30-32	1"1/4	1"5/8-12	1,1/2"	39,2	20,0	24,3	55	
JBSPMA2632	28-30-32	1"1/4	1"5/8-12	2"	39,8	24,5	24,3	70		
JBSPMA3016	35-38	1"1/2	1"7/8-12	1"	44,5	19,0	27,5	50		
JBSPMA3020	35-38	1"1/2	1"7/8-12	1,1/4"	44,5	20,0	27,5	50		
JBSPMA3024	35-38	1"1/2	1"7/8-12	1,1/2"	44,5	20,0	27,5	55		
JBSPMA3032	35-38	1"1/2	1"7/8-12	2"	44,5	24,5	27,5	70		
105	JBSPMA4032	50	2"	2"1/2-12	2"	49,5	24,5	33,9	70	

**ADATTATORE MASCHIO/MASCHIO CON GUARNIZIONE INCASSATA**

Filetto Gas Cilindrico

**ADAPTOR MALE/MALE WITH CAPTIVE SEAL**

Thread BSP Parallel



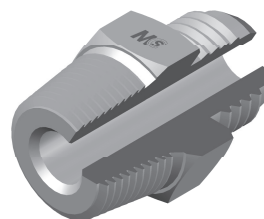
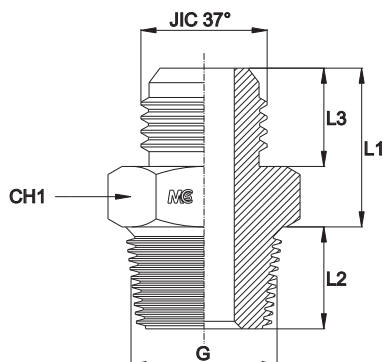
Serie Series	Bar W.P.	Codice Code	Ø Est. Tubo M Tube O.D. M	Ø Est. Tubo W Tube O.D. W	JIC 37°	G	L1	L2	L3	CH1
UNIVERSALE UNIVERSAL	350	JBSPMA0702V	6	1/4"	7/16"-20	1/8"	22,50	8,0	14,0	14
		JBSPMA0704V	6	1/4"	7/16"-20	1/4"	22,50	11,0	14,0	19
		JBSPMA0706V	6	1/4"	7/16"-20	3/8"	23,50	12,0	14,0	22
		JBSPMA0708V	6	1/4"	7/16"-20	1/2"	23,50	14,0	14,0	27
		JBSPMA0802V	8	5/16"	1/2"-20	1/8"	22,50	8,0	14,0	14
		JBSPMA0804V	8	5/16"	1/2"-20	1/4"	22,50	11,0	14,0	19
		JBSPMA0806V	8	5/16"	1/2"-20	3/8"	23,50	12,0	14,0	22
		JBSPMA0808V	8	5/16"	1/2"-20	1/2"	23,50	14,0	14,0	27
		JBSPMA0902V	10	3/8"	9/16"-18	1/8"	23,40	8,0	14,1	17
		JBSPMA0904V	10	3/8"	9/16"-18	1/4"	23,40	11,0	14,1	19
		JBSPMA0906V	10	3/8"	9/16"-18	3/8"	23,60	12,0	14,1	22
		JBSPMA0908V	10	3/8"	9/16"-18	1/2"	23,60	14,0	14,1	27
		JBSPMA1204V	12	1/2"	3/4"-16	1/4"	25,80	12,0	16,7	22
		JBSPMA1206V	12	1/2"	3/4"-16	3/8"	26,20	12,0	16,7	22
		JBSPMA1208V	12	1/2"	3/4"-16	1/2"	26,20	14,0	16,7	27
		JBSPMA1212V	12	1/2"	3/4"-16	3/4"	27,70	16,0	16,7	32
	JBSPMA1406V	14-15-16	5/8"	7/8"-14	3/8"	30,20	12,0	19,3	24	
	JBSPMA1408V	14-15-16	5/8"	7/8"-14	1/2"	30,20	14,0	19,3	27	
	JBSPMA1412V	14-15-16	5/8"	7/8"-14	3/4"	30,70	16,0	19,3	32	
	JBSPMA1416V	14-15-16	5/8"	7/8"-14	1"	32,30	19,0	19,3	41	
	JBSPMA1706V	18-20	3/4"	1"1/16-12	3/8"	34,60	12,0	21,9	30	
	JBSPMA1708V	18-20	3/4"	1"1/16-12	1/2"	34,60	14,0	21,9	30	
	JBSPMA1712V	18-20	3/4"	1"1/16-12	3/4"	35,10	16,0	21,9	32	
	JBSPMA1716V	18-20	3/4"	1"1/16-12	1"	35,10	19,0	21,9	41	
	JBSPMA1720V	18-20	3/4"	1"1/16-12	1"1/4	35,10	20,0	21,9	50	
	JBSPMA2112V	25	1"	1"5/16-12	3/4"	35,90	16,0	23,1	36	
	JBSPMA2116V	25	1"	1"5/16-12	1"	36,10	19,0	23,1	41	
	JBSPMA2120V	25	1"	1"5/16-12	1"1/4	36,10	20,0	23,1	50	
	JBSPMA2124V	25	1"	1"5/16-12	1"1/2	37,60	20,0	23,1	55	
	JBSPMA2616V	28-30-32	1"1/4	1"5/8-12	1"	39,20	19,0	24,3	46	
	JBSPMA2620V	28-30-32	1"1/4	1"5/8-12	1"1/4	39,20	20,0	24,3	50	
	JBSPMA2624V	28-30-32	1"1/4	1"5/8-12	1"1/2	39,20	20,0	24,3	55	
JBSPMA2632V	28-30-32	1"1/4	1"5/8-12	2"	39,80	24,5	24,3	70		
JBSPMA3016V	35-38	1"1/2	1"7/8-12	1"	44,50	19,0	27,5	50		
JBSPMA3020V	35-38	1"1/2	1"7/8-12	1"1/4	44,50	20,0	27,5	50		
JBSPMA3024V	35-38	1"1/2	1"7/8-12	1"1/2	44,50	20,0	27,5	55		
JBSPMA3032V	35-38	1"1/2	1"7/8-12	2"	44,50	24,5	27,5	70		
105	JBSPMA4032V	50	2"	2"1/2-12	2"	49,50	24,5	33,9	70	

**ADATTATORE MASCHIO/MASCHIO**

Filetto Gas Conico

**ADAPTOR MALE/MALE**

Thread BSP Taper



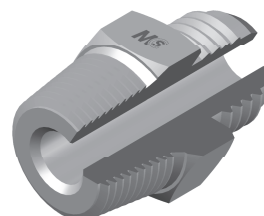
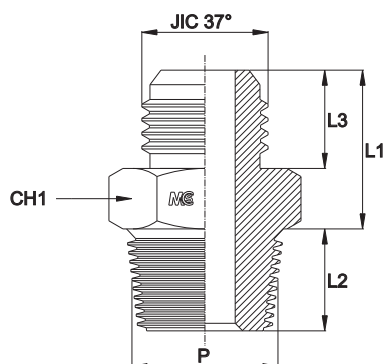
Serie Series	Bar W.P.	Codice Code	Ø Est. Tubo M Tube O.D. M	Ø Est. Tubo W Tube O.D. W	JIC 37°	G	L1	L2	L3	CH1
UNIVERSALE UNIVERSAL	350	JBSPTMA0702	6	1/4"	7/16"-20	1/8"	21,0	8,0	14,0	14
		JBSPTMA0704	6	1/4"	7/16"-20	1/4"	21,0	13,0	14,0	14
		JBSPTMA0708	6	1/4"	7/16"-20	1/2"	23,5	17,0	14,0	22
		JBSPTMA0802	8	5/16"	1/2"-20	1/8"	21,0	8,0	14,0	14
		JBSPTMA0804	8	5/16"	1/2"-20	1/4"	21,0	13,0	14,0	14
		JBSPTMA0806	8	5/16"	1/2"-20	3/8"	22,5	14,0	14,0	19
		JBSPTMA0902	10	3/8"	9/16"-18	1/8"	21,9	8,0	14,1	17
		JBSPTMA0904	10	3/8"	9/16"-18	1/4"	21,9	13,0	14,1	17
		JBSPTMA0906	10	3/8"	9/16"-18	3/8"	22,6	14,0	14,1	19
		JBSPTMA0908	10	3/8"	9/16"-18	1/2"	23,6	17,0	14,1	22
		JBSPTMA1204	12	1/2"	3/4"-16	1/4"	24,3	13,0	16,7	22
		JBSPTMA1206	12	1/2"	3/4"-16	3/8"	25,2	14,0	16,7	22
		JBSPTMA1208	12	1/2"	3/4"-16	1/2"	26,2	17,0	16,7	22
		JBSPTMA1212	12	1/2"	3/4"-16	3/4"	26,7	17,5	16,7	27
	JBSPTMA1406	14-15-16	5/8"	7/8"-14	3/8"	28,7	14,0	19,3	24	
	JBSPTMA1408	14-15-16	5/8"	7/8"-14	1/2"	28,8	17,0	19,3	24	
	JBSPTMA1412	14-15-16	5/8"	7/8"-14	3/4"	29,3	17,5	19,3	27	
	JBSPTMA1708	18-20	3/4"	1"1/16-12	1/2"	33,1	17,0	21,9	30	
	JBSPTMA1712	18-20	3/4"	1"1/16-12	3/4"	33,1	17,5	21,9	30	
	JBSPTMA1716	18-20	3/4"	1"1/16-12	1"	33,1	22,0	21,9	36	
	JBSPTMA2112	25	1"	1"5/16-12	3/4"	33,9	17,5	23,1	36	
	JBSPTMA2116	25	1"	1"5/16-12	1"	34,1	22,0	23,1	36	
	JBSPTMA2120	25	1"	1"5/16-12	1"1/4	34,1	24,0	23,1	46	
	JBSPTMA2124	25	1"	1"5/16-12	1"1/2	34,6	24,0	23,1	50	
	JBSPTMA2616	28-30-32	1"1/4	1"5/8-12	1"	37,2	22,0	24,3	46	
	JBSPTMA2620	28-30-32	1"1/4	1"5/8-12	1"1/4	37,2	24,0	24,3	46	
JBSPTMA2624	28-30-32	1"1/4	1"5/8-12	1"1/2	37,2	24,0	24,3	50		
JBSPTMA3020	35-38	1"1/2	1"7/8-12	1"1/4	42,5	24,0	27,5	50		
JBSPTMA3024	35-38	1"1/2	1"7/8-12	1"1/2	42,5	24,0	27,5	50		
105	JBSPTMA4032	50	2"	2"1/2-12	2"	52,6	25,0	33,9	65	

**ADATTATORE MASCHIO/MASCHIO**

Filetto NPT

**ADAPTOR MALE/MALE**

Thread NPT



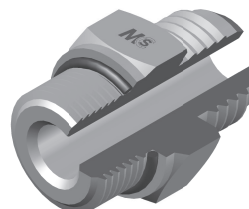
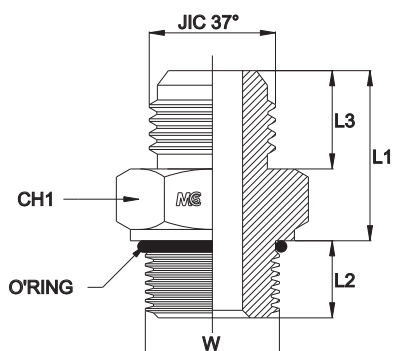
Serie Series	Bar W.P.	Codice Code	Ø Est. Tubo M Tube O.D. M	Ø Est. Tubo W Tube O.D. W	JIC 37°	P	L1	L2	L3	CH1
UNIVERSALE UNIVERSAL	350	JNPTMA0702	6	1/4"	7/16"-20	1/8"	21,0	10,0	14,0	14
		JNPTMA0704	6	1/4"	7/16"-20	1/4"	21,0	14,0	14,0	14
		JNPTMA0706	6	1/4"	7/16"-20	3/8"	22,5	14,0	14,0	19
		JNPTMA0708	6	1/4"	7/16"-20	1/2"	23,5	19,0	14,0	22
		JNPTMA0802	8	5/16"	1/2"-20	1/8"	21,0	10,0	14,0	14
		JNPTMA0804	8	5/16"	1/2"-20	1/4"	21,0	14,0	14,0	14
		JNPTMA0806	8	5/16"	1/2"-20	3/8"	22,5	14,0	14,0	19
		JNPTMA0902	10	3/8"	9/16"-18	1/8"	21,9	10,0	14,1	17
		JNPTMA0904	10	3/8"	9/16"-18	1/4"	21,9	14,0	14,1	17
		JNPTMA0906	10	3/8"	9/16"-18	3/8"	22,6	14,0	14,1	19
		JNPTMA0908	10	3/8"	9/16"-18	1/2"	23,6	19,0	14,1	22
		JNPTMA1204	12	1/2"	3/4"-16	1/4"	24,3	14,0	16,7	22
		JNPTMA1206	12	1/2"	3/4"-16	3/8"	25,2	14,0	16,7	22
		JNPTMA1208	12	1/2"	3/4"-16	1/2"	26,2	19,0	16,7	22
		JNPTMA1212	12	1/2"	3/4"-16	3/4"	26,7	19,0	16,7	27
		JNPTMA1406	14-15-16	5/8"	7/8"-14	3/8"	28,7	14,0	19,3	24
	JNPTMA1408	14-15-16	5/8"	7/8"-14	1/2"	28,8	19,0	19,3	24	
	JNPTMA1412	14-15-16	5/8"	7/8"-14	3/4"	29,3	19,0	19,3	27	
	JNPTMA1706	18-20	3/4"	1"1/16-12	3/8"	33,1	19,0	21,9	30	
	JNPTMA1708	18-20	3/4"	1"1/16-12	1/2"	33,1	19,0	21,9	30	
	JNPTMA1712	18-20	3/4"	1"1/16-12	3/4"	33,1	19,0	21,9	30	
	JNPTMA1716	18-20	3/4"	1"1/16-12	1"	33,1	24,0	21,9	36	
	290	JNPTMA2112	25	1"	1"5/16-12	3/4"	33,9	19,0	23,1	36
	JNPTMA2116	25	1"	1"5/16-12	1"	34,1	24,0	23,1	36	
	240	JNPTMA2120	25	1"	1"5/16-12	1"1/4	34,1	24,5	23,1	46
		JNPTMA2124	25	1"	1"5/16-12	1"1/2	34,6	25,0	23,1	50
		JNPTMA2616	28-30-32	1"1/4	1"5/8-12	1"	37,2	24,0	24,3	46
		JNPTMA2620	28-30-32	1"1/4	1"5/8-12	1"1/4	37,2	24,5	24,3	46
JNPTMA2624		28-30-32	1"1/4	1"5/8-12	1"1/2	37,2	25,0	24,3	50	
JNPTMA3020		35-38	1"1/2	1"7/8-12	1"1/4	42,5	24,5	27,5	50	
JNPTMA3024	35-38	1"1/2	1"7/8-12	1"1/2	42,5	25,0	27,5	50		
105	JNPTMA4032	50	2"	2"1/2-12	2"	52,6	26,0	33,9	65	

**ADATTATORE MASCHIO/MASCHIO CON O'RING**

Filetto UNF/UN-2A

**ADAPTOR MALE/MALE WITH O'RING**

Thread UNF/UN-2A



Serie Series	Bar W.P.	Codice Code	Ø Est. Tubo M Tube O.D. M	Ø Est. Tubo W Tube O.D. W	JIC 37°	W	L1	L2	L3	CH1
UNIVERSALE UNIVERSAL	400	JUNFMA0707	6	1/4"	7/16"-20	7/16"-20	21,9	9,1	14,0	14
		JUNFMA0708	6	1/4"	7/16"-20	1/2"-20	21,9	9,1	14,0	17
	350	JUNFMA0709	6	1/4"	7/16"-20	9/16"-18	23,0	10,0	14,0	17
		JUNFMA0712	6	1/4"	7/16"-20	3/4"-16	23,9	11,1	14,0	22
	400	JUNFMA0808	8	5/16"	1/2"-20	1/2"-20	21,9	9,1	14,0	17
		JUNFMA0809	8	5/16"	1/2"-20	9/16"-18	23,0	10,0	14,0	17
	350	JUNFMA0907	10	3/8"	9/16"-18	7/16"-20	22,9	9,1	14,1	17
		JUNFMA0908	10	3/8"	9/16"-18	1/2"-20	22,9	9,1	14,1	17
		JUNFMA0909	10	3/8"	9/16"-18	9/16"-18	23,0	10,0	14,1	17
		JUNFMA0912	10	3/8"	9/16"-18	3/4"-16	23,9	11,1	14,1	22
		JUNFMA0914	10	3/8"	9/16"-18	7/8"-14	25,3	12,7	14,1	27
		JUNFMA1209	12	1/2"	3/4"-16	9/16"-18	26,5	10,0	16,7	22
		JUNFMA1212	12	1/2"	3/4"-16	3/4"-16	26,4	11,1	16,7	22
		JUNFMA1214	12	1/2"	3/4"-16	7/8"-14	27,8	12,7	16,7	27
		JUNFMA1217	12	1/2"	3/4"-16	1" 1/16-12	29,9	15,1	16,7	32
		JUNFMA1412	14-15-16	5/8"	7/8"-14	3/4"-16	30,4	11,1	19,3	24
		JUNFMA1414	14-15-16	5/8"	7/8"-14	7/8"-14	30,3	12,7	19,3	27
		JUNFMA1417	14-15-16	5/8"	7/8"-14	1" 1/16-12	32,4	15,1	19,3	32
		JUNFMA1712	18-20	3/4"	1" 1/16-12	3/4"-16	33,9	11,1	21,9	30
		JUNFMA1714	18-20	3/4"	1" 1/16-12	7/8"-14	33,8	12,7	21,9	30
	JUNFMA1717	18-20	3/4"	1" 1/16-12	1" 1/16-12	34,9	15,1	21,9	32	
	290	JUNFMA1721	18-20	3/4"	1" 1/16-12	1" 5/16-12	35,4	15,1	21,9	41
		JUNFMA2114	25	1"	1" 5/16-12	7/8"-14	36,3	12,7	23,1	36
		JUNFMA2117	25	1"	1" 5/16-12	1" 1/16-12	36,4	15,1	23,1	36
	240	JUNFMA2121	25	1"	1" 5/16-12	1" 5/16-12	36,4	15,1	23,1	41
		JUNFMA2126	25	1"	1" 5/16-12	1" 5/8-12	38,9	15,1	23,1	50
		JUNFMA2621	28-30-32	1" 1/4	1" 5/8-12	1" 5/16-12	38,9	15,1	24,3	46
		JUNFMA2626	28-30-32	1" 1/4	1" 5/8-12	1" 5/8-12	39,9	15,1	24,3	50
		JUNFMA3026	35-38	1" 1/2	1" 7/8-12	1" 5/8-12	42,9	15,1	27,5	50
	JUNFMA3030	35-38	1" 1/2	1" 7/8-12	1" 7/8-12	44,9	15,1	27,5	55	

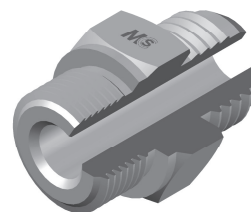
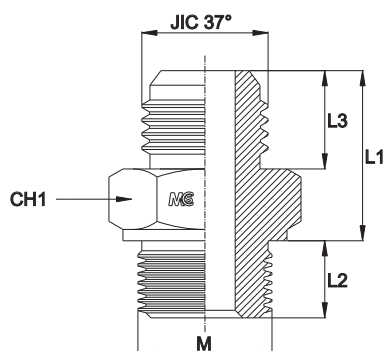


**ADATTATORE MASCHIO/MASCHIO**

Filetto Metrico

**ADAPTOR MALE/MALE**

Thread Metric



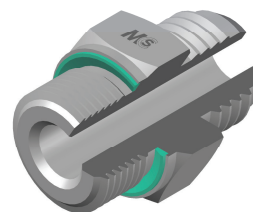
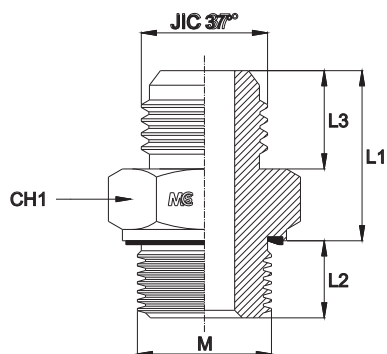
Serie Series	Bar W.P.	Codice Code	Ø Est. Tubo M Tube O.D. M	Ø Est. Tubo W Tube O.D. W	JIC 37°	M	L1	L2	L3	CH1
UNIVERSALE UNIVERSAL	350	JMMA07101	6	1/4"	7/16"-20	10x1	22,0	8,0	14,0	14
		JMMA071215	6	1/4"	7/16"-20	12x1,5	22,5	12,0	14,0	17
		JMMA08101	8	5/16"	1/2"-20	10x1	22,0	8,0	14,0	14
		JMMA081215	8	5/16"	1/2"-20	12x1,5	22,5	12,0	14,0	17
		JMMA081415	8	5/16"	1/2"-20	14x1,5	22,5	12,0	14,0	19
		JMMA091415	10	3/8"	9/16"-18	14x1,5	23,4	12,0	14,1	19
		JMMA091615	10	3/8"	9/16"-18	16x1,5	23,4	12,0	14,1	22
		JMMA121415	12	1/2"	3/4"-16	14x1,5	25,8	12,0	16,7	19
		JMMA121615	12	1/2"	3/4"-16	16x1,5	25,8	12,0	16,7	22
		JMMA142215	14-15-16	5/8"	7/8"-14	22x1,5	30,8	14,0	19,3	27
	JMMA172215	18-20	3/4"	1" 1/16-12	22x1,5	34,6	14,0	21,9	27	
	JMMA17272	18-20	3/4"	1" 1/16-12	27x2	32,5	16,0	21,9	32	
	JMMA21272	25	1"	1" 5/16-12	27x2	34,5	16,0	23,1	32	
	JMMA21332	25	1"	1" 5/16-12	33x2	34,5	18,0	23,1	41	
	JMMA26422	28-30-32	1" 1/4	1" 5/8-12	42x2	38,0	20,0	24,3	50	
JMMA30482	35-38	1" 1/2	1" 7/8-12	48x2	41,5	22,0	27,5	55		

**ADATTATORE MASCHIO/MASCHIO CON GUARNIZIONE INCASSATA**

Filetto Metrico

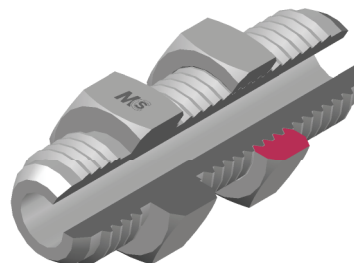
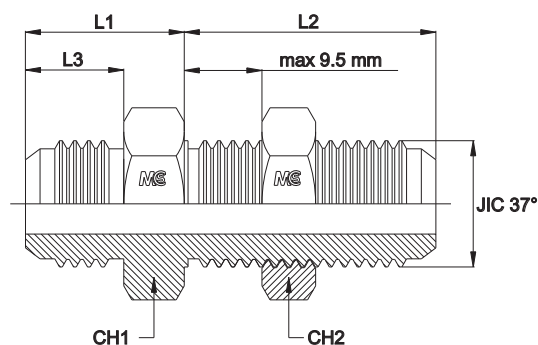
**ADAPTOR MALE/MALE WITH CAPTIVE SEAL**

Thread Metric



Serie Series	Bar W.P.	Codice Code	Ø Est. Tubo M Tube O.D. M	Ø Est. Tubo W Tube O.D. W	JIC 37°	M	L1	L2	L3	CH1
UNIVERSALE UNIVERSAL	350	JMMA07101V	6	1/4"	7/16"-20	10x1	22,0	8,0	14,0	14
		JMMA071215V	6	1/4"	7/16"-20	12x1,5	22,5	12,0	14,0	17
		JMMA08101V	8	5/16"	1/2"-20	10x1	22,0	8,0	14,0	14
		JMMA081215V	8	5/16"	1/2"-20	12x1,5	22,5	12,0	14,0	17
		JMMA081415V	8	5/16"	1/2"-20	14x1,5	22,5	12,0	14,0	19
		JMMA091415V	10	3/8"	9/16"-18	14x1,5	23,4	12,0	14,1	19
		JMMA091615V	10	3/8"	9/16"-18	16x1,5	23,4	12,0	14,1	22
		JMMA121415V	12	1/2"	3/4"-16	14x1,5	25,8	12,0	16,7	19
		JMMA121615V	12	1/2"	3/4"-16	16x1,5	25,8	12,0	16,7	22
		JMMA142215V	14-15-16	5/8"	7/8"-14	22x1,5	30,8	14,0	19,3	27
	JMMA172215V	18-20	3/4"	1" 1/16-12	22x1,5	34,6	14,0	21,9	27	
	JMMA17272V	18-20	3/4"	1" 1/16-12	27x2	32,5	16,0	21,9	32	
	290	JMMA21272V	25	1"	1" 5/16-12	27x2	34,5	16,0	23,1	32
	JMMA21332V	25	1"	1" 5/16-12	33x2	34,5	18,0	23,1	41	
	240	JMMA26422V	28-30-32	1" 1/4	1" 5/8-12	42x2	38,0	20,0	24,3	50
JMMA30482V	35-38	1" 1/2	1" 7/8-12	48x2	41,5	22,0	27,5	55		

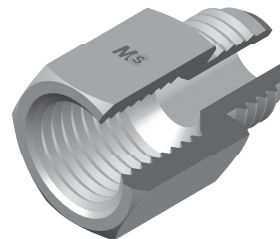
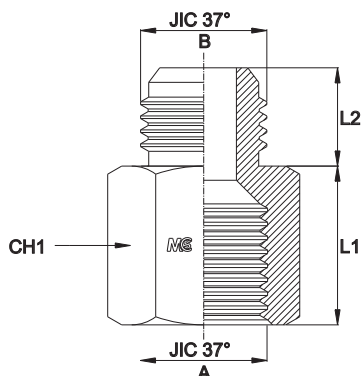
## PASSAPARETE CON DADO BULKHEAD ADAPTOR WITH NUT



Serie Series	Bar W.P.	Codice Code	Ø Est. Tubo M Tube O.D. M	Ø Est. Tubo W Tube O.D. W	JIC 37°	L1	L2	L3	CH1	CH2
UNIVERSALE UNIVERSAL	450	JBMA07	6	1/4"	7/16"-20	21,0	31,5	14,0	17	17
		JBMA08	8	5/16"	1/2"-20	21,0	31,5	14,0	19	19
	350	JBMA09	10	3/8"	9/16"-18	21,9	33,5	14,1	22	22
		JBMA12	12	1/2"	3/4"-16	24,3	37,6	16,7	24	24
		JBMA14	14-15-16	5/8"	7/8"-14	28,7	41,1	19,3	30	30
	290	JBMA17	18-20	3/4"	1"1/16-12	33,1	45,4	21,9	36	36
		JBMA21	25	1"	1"5/16-12	33,9	45,5	23,1	41	41
	240	JBMA26	28-30-32	1"1/4	1"5/8-12	37,2	46,7	24,3	50	50
		JBMA30	35-38	1"1/2	1"7/8-12	42,5	47,0	27,5	55	55
	105	JBMA40	50	2"	2"1/2-12	52,6	53,0	33,9	65	70

# ADATTATORE MASCHIO/FEMMINA FISSA

## ADAPTOR MALE/FIXED FEMALE



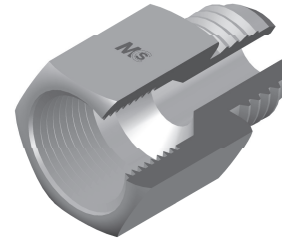
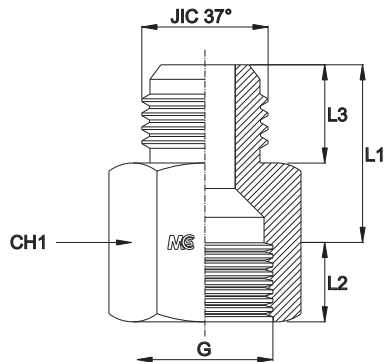
Serie Series	Bar W.P.	Codice Code	Ø Est. Tubo A <sup>M</sup> Tube O.D. A <sup>M</sup>	Ø Est. Tubo B <sup>M</sup> Tube O.D. B <sup>M</sup>	Ø Est. Tubo A <sup>W</sup> Tube O.D. A <sup>W</sup>	Ø Est. Tubo B <sup>W</sup> Tube O.D. B <sup>W</sup>	JIC 37° A	JIC 37° B	L1	L2	CH1
UNIVERSALE UNIVERSAL	350	JMFFA0709	10	6	3/8"	1/4"	9/16"-18	7/16"-20	19,0	14,0	19
		JMFFA0712	12	6	1/2"	1/4"	3/4"-16	7/16"-20	21,9	14,0	22
		JMFFA0812	12	8	1/2"	5/16"	3/4"-16	1/2"-20	21,9	14,0	22
		JMFFA0912	12	10	1/2"	3/8"	3/4"-16	9/16"-18	21,8	14,1	22
		JMFFA0714	14-15-16	6	5/8"	1/4"	7/8"-14	7/16"-20	25,2	14,0	27
		JMFFA0814	14-15-16	8	5/8"	5/16"	7/8"-14	1/2"-20	25,2	14,0	27
		JMFFA0914	14-15-16	10	5/8"	3/8"	7/8"-14	9/16"-18	25,1	14,1	27
		JMFFA0717	18-20	6	3/4"	1/4"	1"1/16-12	7/16"-20	26,4	14,0	32
		JMFFA0817	18-20	8	3/4"	5/16"	1"1/16-12	1/2"-20	26,4	14,0	32
	JMFFA0917	18-20	10	3/4"	3/8"	1"1/16-12	9/16"-18	26,3	14,1	32	
	JMFFA1217	18-20	12	3/4"	1/2"	1"1/16-12	3/4"-16	26,2	16,7	32	
	290	JMFFA0721	25	6	1"	1/4"	1"5/16-12	7/16"-20	29,3	14,0	41
		JMFFA0821	25	8	1"	5/16"	1"5/16-12	1/2"-20	29,3	14,0	41
		JMFFA0921	25	10	1"	3/8"	1"5/16-12	9/16"-18	29,2	14,1	41
		JMFFA1221	25	12	1"	1/2"	1"5/16-12	3/4"-16	28,6	16,7	41
		JMFFA1421	25	14-15-16	1"	5/8"	1"5/16-12	7/8"-14	24,5	19,3	41
		JMFFA1721	25	18-20	1"	3/4"	1"5/16-12	1"1/16-12	28,9	21,9	41
	240	JMFFA0726	28-30-32	6	1"1/4	1/4"	1"5/8-12	7/16"-20	31,8	14,0	50
		JMFFA0826	28-30-32	8	1"1/4	5/16"	1"5/8-12	1/2"-20	31,8	14,0	50
		JMFFA0926	28-30-32	10	1"1/4	3/8"	1"5/8-12	9/16"-18	31,7	14,1	50
		JMFFA1226	28-30-32	12	1"1/4	1/2"	1"5/8-12	3/4"-16	31,6	16,7	50
		JMFFA1426	28-30-32	14-15-16	1"1/4	5/8"	1"5/8-12	7/8"-14	31,5	19,3	50
		JMFFA1726	28-30-32	18-20	1"1/4	3/4"	1"5/8-12	1"1/16-12	31,4	21,9	50
		JMFFA2126	28-30-32	25	1"1/4	1"	1"5/8-12	1"5/16-12	31,7	23,1	50
		JMFFA0730	35-38	6	1"1/2	1/4"	1"7/8-12	7/16"-20	36,4	14,0	60
		JMFFA0830	35-38	8	1"1/2	5/16"	1"7/8-12	1/2"-20	36,4	14,0	60
		JMFFA0930	35-38	10	1"1/2	3/8"	1"7/8-12	9/16"-18	36,3	14,1	60
		JMFFA1230	35-38	12	1"1/2	1/2"	1"7/8-12	3/4"-16	36,2	16,7	60
		JMFFA1430	35-38	14-15-16	1"1/2	5/8"	1"7/8-12	7/8"-14	36,1	19,3	60
		JMFFA1730	35-38	18-20	1"1/2	3/4"	1"7/8-12	1"1/16-12	36,5	21,9	60
		JMFFA2130	35-38	25	1"1/2	1"	1"7/8-12	1"5/16-12	36,3	23,1	60
		JMFFA2630	35-38	28-30-32	1"1/2	1"1/4	1"7/8-12	1"5/8-12	36,2	24,3	60

**ADATTATORE MASCHIO/FEMMINA FISSA**

Filetto Gas Cilindrico

**ADAPTOR MALE/FIXED FEMALE**

Thread BSP Parallel



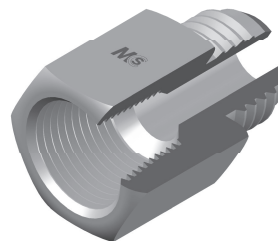
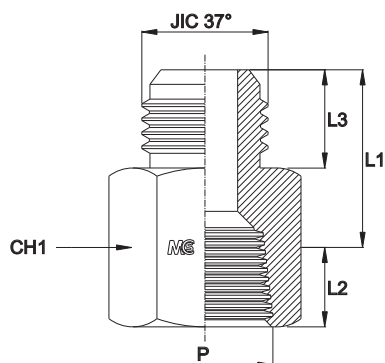
Serie Series	Bar W.P.	Codice Code	Ø Est. Tubo M Tube O.D. M	Ø Est. Tubo W Tube O.D. W	JIC 37°	G	L1	L2	L3	CH1
UNIVERSALE UNIVERSAL	350	JBSPMFFA0702	6	1/4"	7/16"-20	1/8"	20,0	10,0	14,0	14
		JBSPMFFA0704	6	1/4"	7/16"-20	1/4"	21,0	13,0	14,0	19
		JBSPMFFA0802	8	5/16"	1/2"-20	1/8"	20,0	10,0	14,0	14
		JBSPMFFA0804	8	5/16"	1/2"-20	1/4"	21,0	13,0	14,0	19
		JBSPMFFA0904	10	3/8"	9/16"-18	1/4"	21,0	13,0	14,1	19
		JBSPMFFA0906	10	3/8"	9/16"-18	3/8"	22,0	14,0	14,1	22
		JBSPMFFA0908	10	3/8"	9/16"-18	1/2"	23,5	16,0	14,1	27
		JBSPMFFA1204	12	1/2"	3/4"-16	1/4"	25,0	13,0	16,7	22
		JBSPMFFA1206	12	1/2"	3/4"-16	3/8"	25,0	14,0	16,7	22
		JBSPMFFA1208	12	1/2"	3/4"-16	1/2"	26,0	16,0	16,7	27
	JBSPMFFA1408	14-15-16	5/8"	7/8"-14	1/2"	28,5	16,0	19,3	27	
	JBSPMFFA1708	18-20	3/4"	1"1/16-12	1/2"	31,0	16,0	21,9	30	
	JBSPMFFA1712	18-20	3/4"	1"1/16-12	3/4"	32,0	18,0	21,9	30	
	290	JBSPMFFA2116	25	1"	1"5/16-12	1"	32,5	21,0	23,1	41
240	JBSPMFFA2616	28-30-32	1"1/4	1"5/8-12	1"	34,0	21,0	24,3	46	
	JBSPMFFA2620	28-30-32	1"1/4	1"5/8-12	1"1/4	37,0	22,0	24,3	50	
	JBSPMFFA3020	35-38	1"1/2	1"7/8-12	1"1/4	40,5	22,0	27,5	50	
	JBSPMFFA3024	35-38	1"1/2	1"7/8-12	1"1/2	40,0	22,0	27,5	55	

**ADATTATORE MASCHIO/FEMMINA FISSA**

Filetto NPT

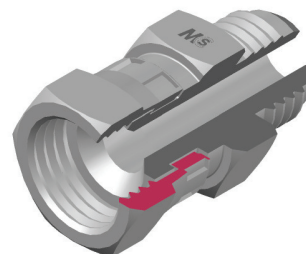
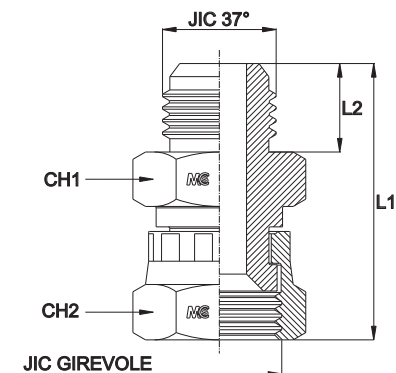
**ADAPTOR MALE/FIXED FEMALE**

Thread NPT



Serie Series	Bar W.P.	Codice Code	Ø Est. Tubo M Tube O.D. M	Ø Est. Tubo W Tube O.D. W	JIC 37°	P	L1	L2	L3	CH1
UNIVERSALE UNIVERSAL	350	JNPTMFFA0702	6	1/4"	7/16"-20	1/8"	20,5	12,0	14,0	14
		JNPTMFFA0704	6	1/4"	7/16"-20	1/4"	21,5	16,0	14,0	14
		JNPTMFFA0802	8	5/16"	1/2"-20	1/8"	20,5	12,0	14,0	14
		JNPTMFFA0804	8	5/16"	1/2"-20	1/4"	21,5	16,0	14,0	14
		JNPTMFFA0904	10	3/8"	9/16"-18	1/4"	21,5	16,0	14,1	17
		JNPTMFFA0906	10	3/8"	9/16"-18	3/8"	22,5	16,0	14,1	19
		JNPTMFFA1204	12	1/2"	3/4"-16	1/4"	25,5	16,0	16,7	22
		JNPTMFFA1206	12	1/2"	3/4"-16	3/8"	25,0	16,0	16,7	22
		JNPTMFFA1208	12	1/2"	3/4"-16	1/2"	26,5	21,0	16,7	22
		JNPTMFFA1408	14-15-16	5/8"	7/8"-14	1/2"	29,0	21,0	19,3	24
	JNPTMFFA1708	18-20	3/4"	1"1/16-12	1/2"	32,0	21,0	21,9	30	
	JNPTMFFA1712	18-20	3/4"	1"1/16-12	3/4"	32,5	21,0	21,9	30	
	290	JNPTMFFA2116	25	1"	1"5/16-12	1"	36,0	21,0	23,1	36
	240	JNPTMFFA2620	28-30-32	1"1/4	1"5/8-12	1"1/4	39,5	26,0	24,3	46
JNPTMFFA3024		35-38	1"1/2	1"7/8-12	1"1/2	42,5	27,0	27,5	50	

## ADATTATORE MASCHIO/FEMMINA GIREVOLE JIC MALE/SWIVEL FEMALE ADAPTOR



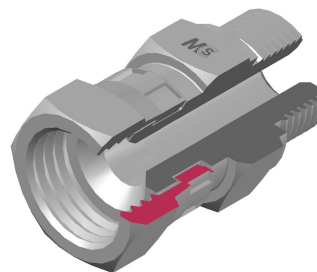
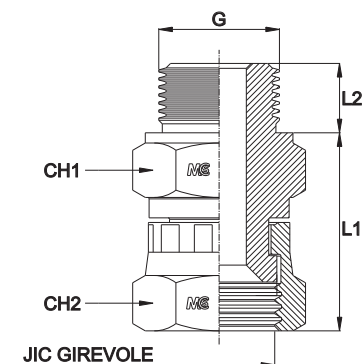
Serie Series	Bar W.P.	Codice Code	JIC 37°	JIC 37°	L1	L2	CH1	CH2
UNIVERSALE UNIVERSAL	350	JMSFA0707	7/16"-20	7/16"-20	41,0	14,0	14	17
		JMSFA0808	1/2"-20	1/2"-20	41,0	14,0	14	17
		JMSFA0909	9/16"-18	9/16"-18	41,9	14,1	17	19
		JMSFA1212	3/4"-16	3/4"-16	48,3	16,7	22	24
		JMSFA1414	7/8"-14	7/8"-14	55,7	19,3	24	27
	JMSFA1717	1"1/16-12	1"1/16-12	62,1	21,9	27	32	
	290	JMSFA2121	1"5/16-12	1"5/16-12	65,9	23,1	36	38
	240	JMSFA2626	1"5/8-12	1"5/8-12	71,2	24,3	46	50
		JMSFA3030	1"7/8-12	1"7/8-12	80,5	27,5	50	55

**ADATTATORE MASCHIO/FEMMINA GIREVOLE**

Filetto Gas Cilindrico

**MALE/SWIVEL FEMALE ADAPTOR**

Thread BSP Parallel



Serie Series	Bar W.P.	Codice Code	JIC 37°	G	L1	L2	CH1	CH2
UNIVERSALE UNIVERSAL	350	JBSPSFMA0702	7/16"-20	1/8"	27,5	8,0	14	17
		JBSPSFMA0704	7/16"-20	1/4"	28,5	11,0	19	17
		JBSPSFMA0706	7/16"-20	3/8"	29,5	12,0	22	17
		JBSPSFMA0802	1/2"-20	1/8"	27,5	8,0	14	17
		JBSPSFMA0804	1/2"-20	1/4"	28,5	11,0	19	17
		JBSPSFMA0806	1/2"-20	3/8"	29,5	12,0	22	17
		JBSPSFMA0904	9/16"-18	1/4"	28,5	11,0	19	19
		JBSPSFMA0906	9/16"-18	3/8"	29,5	12,0	22	19
		JBSPSFMA0908	9/16"-18	1/2"	29,5	14,0	27	19
		JBSPSFMA1204	3/4"-16	1/4"	32,5	11,0	19	24
		JBSPSFMA1206	3/4"-16	3/8"	33,5	12,0	22	24
		JBSPSFMA1208	3/4"-16	1/2"	33,5	14,0	27	24
	JBSPSFMA1406	7/8"-14	3/8"	36,5	12,0	22	27	
	JBSPSFMA1408	7/8"-14	1/2"	36,5	14,0	27	27	
	JBSPSFMA1412	7/8"-14	3/4"	38,0	16,0	32	27	
	JBSPSFMA1708	1"1/16-12	1/2"	38,5	14,0	27	32	
	JBSPSFMA1712	1"1/16-12	3/4"	40,0	16,0	32	32	
	JBSPSFMA1716	1"1/16-12	1"	42,0	18,0	41	32	
	JBSPSFMA2112	1"5/16-12	3/4"	43,0	16,0	32	38	
	JBSPSFMA2116	1"5/16-12	1"	45,0	18,0	41	38	
	JBSPSFMA2120	1"5/16-12	1"1/4	45,0	20,0	50	38	
	JBSPSFMA2616	1"5/8-12	1"	47,0	18,0	41	50	
	JBSPSFMA2620	1"5/8-12	1"1/4	47,0	20,0	50	50	
	JBSPSFMA3020	1"7/8-12	1"1/4	51,0	20,0	50	55	
JBSPSFMA3024	1"7/8-12	1"1/2	52,5	22,0	55	55		

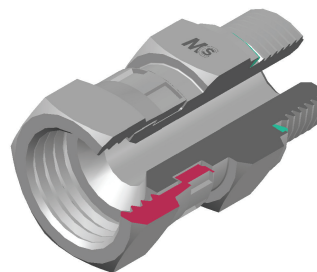
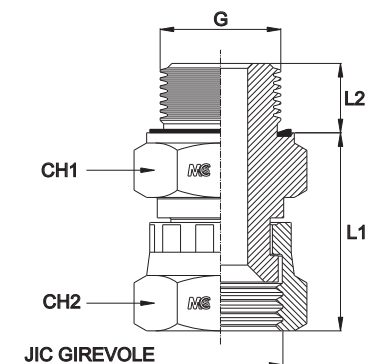


**ADATTATORE MASCHIO/FEMMINA GIR. CON GUARNIZIONE INCASSATA**

Filetto Gas Cilindrico

**MALE/SWIVEL FEMALE ADAPTOR WITH CAPTIVE SEAL**

Thread BSP Parallel



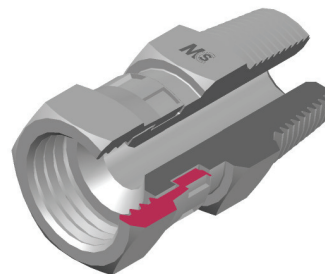
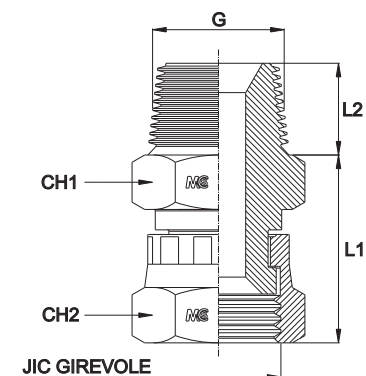
Serie Series	Bar W.P.	Codice Code	JIC 37°	G	L1	L2	CH1	CH2
UNIVERSALE UNIVERSAL	350	JBSPSFMA0702V	7/16"-20	1/8"	27,5	8,0	14	17
		JBSPSFMA0704V	7/16"-20	1/4"	28,5	11,0	19	17
		JBSPSFMA0706V	7/16"-20	3/8"	29,5	12,0	22	17
		JBSPSFMA0802V	1/2"-20	1/8"	27,5	8,0	14	17
		JBSPSFMA0804V	1/2"-20	1/4"	28,5	11,0	19	17
		JBSPSFMA0806V	1/2"-20	3/8"	29,5	12,0	22	17
		JBSPSFMA0904V	9/16"-18	1/4"	28,5	11,0	19	19
		JBSPSFMA0906V	9/16"-18	3/8"	29,5	12,0	22	19
		JBSPSFMA0908V	9/16"-18	1/2"	29,5	14,0	27	19
		JBSPSFMA1204V	3/4"-16	1/4"	32,5	11,0	19	24
		JBSPSFMA1206V	3/4"-16	3/8"	33,5	12,0	22	24
		JBSPSFMA1208V	3/4"-16	1/2"	33,5	14,0	27	24
	JBSPSFMA1406V	7/8"-14	3/8"	36,5	12,0	22	27	
	JBSPSFMA1408V	7/8"-14	1/2"	36,5	14,0	27	27	
	JBSPSFMA1412V	7/8"-14	3/4"	38,0	16,0	32	27	
	JBSPSFMA1708V	1"1/16-12	1/2"	38,5	14,0	27	32	
	JBSPSFMA1712V	1"1/16-12	3/4"	40,0	16,0	32	32	
	JBSPSFMA1716V	1"1/16-12	1"	42,0	18,0	41	32	
	JBSPSFMA2112V	1"5/16-12	3/4"	43,0	16,0	32	38	
	JBSPSFMA2116V	1"5/16-12	1"	45,0	18,0	41	38	
	JBSPSFMA2120V	1"5/16-12	1"1/4	45,0	20,0	50	38	
	JBSPSFMA2616V	1"5/8-12	1"	47,0	18,0	41	50	
	JBSPSFMA2620V	1"5/8-12	1"1/4	47,0	20,0	50	50	
	JBSPSFMA3020V	1"7/8-12	1"1/4	51,0	20,0	50	55	
JBSPSFMA3024V	1"7/8-12	1"1/2	52,5	22,0	55	55		

**ADATTATORE MASCHIO/FEMMINA GIREVOLE**

Filetto Gas Conico

**MALE/SWIVEL FEMALE ADAPTOR**

Thread BSP Taper



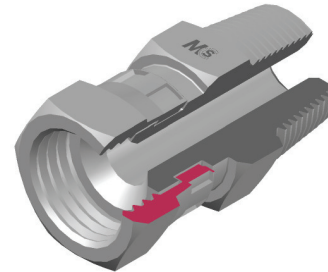
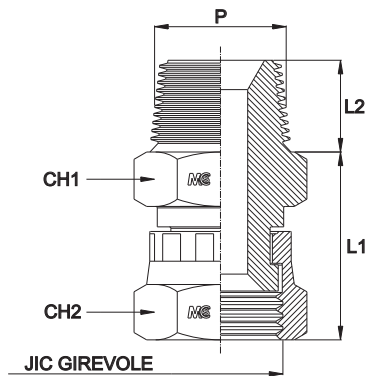
Serie Series	Bar W.P.	Codice Code	JIC 37°	G	L1	L2	CH1	CH2
UNIVERSALE UNIVERSAL	350	JBSPTSFMA0702	7/16"-20	1/8"	27,0	8,0	14	17
		JBSPTSFMA0704	7/16"-20	1/4"	27,0	13,0	14	17
		JBSPTSFMA0802	1/2"-20	1/8"	27,0	8,0	14	17
		JBSPTSFMA0804	1/2"-20	1/4"	27,0	13,0	14	17
		JBSPTSFMA0904	9/16"-18	1/4"	27,0	13,0	14	19
		JBSPTSFMA0906	9/16"-18	3/8"	28,5	14,0	19	19
		JBSPTSFMA1204	3/4"-16	1/4"	31,0	13,0	14	24
		JBSPTSFMA1206	3/4"-16	3/8"	32,5	14,0	19	24
		JBSPTSFMA1208	3/4"-16	1/2"	33,5	17,0	22	24
		JBSPTSFMA1406	7/8"-14	3/8"	35,5	14,0	19	27
	JBSPTSFMA1408	7/8"-14	1/2"	36,5	17,0	22	27	
	JBSPTSFMA1412	7/8"-14	3/4"	37,0	17,5	27	27	
	JBSPTSFMA1708	1"1/16-12	1/2"	38,5	17,0	22	32	
	JBSPTSFMA1712	1"1/16-12	3/4"	39,0	17,5	27	32	
	JBSPTSFMA1716	1"1/16-12	1"	40,0	22,0	36	32	
	JBSPTSFMA2112	1"5/16-12	3/4"	42,0	17,5	27	38	
	JBSPTSFMA2116	1"5/16-12	1"	43,0	22,0	36	38	
	JBSPTSFMA2620	1"5/8-12	1"1/4	45,0	24,0	46	50	
	JBSPTSFMA3024	1"7/8-12	1"1/2	49,5	24,0	50	55	

**ADATTATORE MASCHIO/FEMMINA GIREVOLE**

Filetto NPT

**MALE/SWIVEL FEMALE ADAPTOR**

Thread NPT



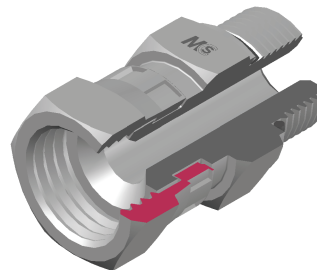
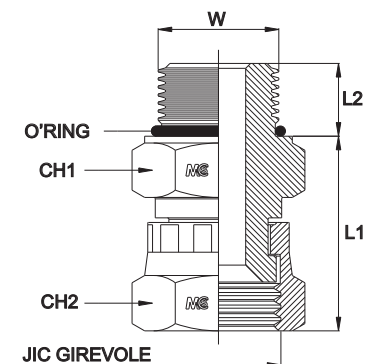
Serie Series	Bar W.P.	Codice Code	JIC 37°	P	L1	L2	CH1	CH2
UNIVERSALE UNIVERSAL	350	JNPTSFMA0702	7/16"-20	1/8"	27,0	10,0	14	17
		JNPTSFMA0704	7/16"-20	1/4"	27,0	14,0	14	17
		JNPTSFMA0802	1/2"-20	1/8"	27,0	10,0	14	17
		JNPTSFMA0804	1/2"-20	1/4"	27,0	14,0	14	17
		JNPTSFMA0902	9/16"-18	1/8"	27,0	10,0	14	19
		JNPTSFMA0904	9/16"-18	1/4"	27,0	14,0	14	19
		JNPTSFMA0906	9/16"-18	3/8"	28,5	14,0	19	19
		JNPTSFMA0908	9/16"-18	1/2"	29,5	19,0	22	19
		JNPTSFMA1204	3/4"-16	1/4"	31,0	14,0	14	24
		JNPTSFMA1206	3/4"-16	3/8"	32,5	14,0	19	24
		JNPTSFMA1208	3/4"-16	1/2"	33,5	19,0	22	24
		JNPTSFMA1212	3/4"-16	3/4"	34,0	19,0	27	24
		JNPTSFMA1406	7/8"-14	3/8"	35,5	14,0	19	27
		JNPTSFMA1408	7/8"-14	1/2"	36,5	19,0	22	27
	JNPTSFMA1412	7/8"-14	3/4"	37,0	19,0	27	27	
	JNPTSFMA1708	1" 1/16-12	1/2"	38,5	19,0	22	32	
	JNPTSFMA1712	1" 1/16-12	3/4"	39,0	19,0	27	32	
	290	JNPTSFMA2112	1" 5/16-12	3/4"	42,0	19,0	27	38
		JNPTSFMA2116	1" 5/16-12	1"	43,0	19,0	36	38
	240	JNPTSFMA2616	1" 5/8-12	1"	45,0	19,0	36	50
JNPTSFMA2620		1" 5/8-12	1" 1/4	45,0	24,0	46	50	
		JNPTSFMA3024	1" 7/8-12	1" 1/2	49,5	25,0	50	55

**ADATTATORE MASCHIO/FEMMINA GIREVOLE CON O'RING**

Filetto UNF/UN-2A

**MALE/SWIVEL FEMALE ADAPTOR WITH O'RING**

Thread UNF/UN-2A



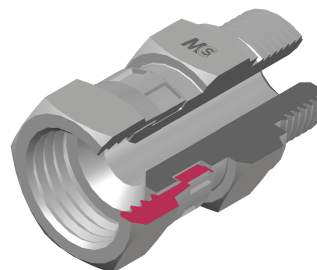
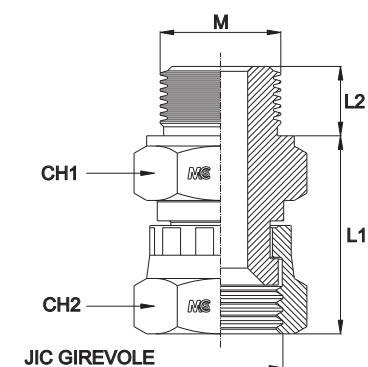
Serie Series	Bar W.P.	Codice Code	JIC 37°	W	L1	L2	CH1	CH2
UNIVERSALE UNIVERSAL	350	JUNFSFMA0707	7/16"-20	7/16"-20	28,5	9,1	14	17
		JUNFSFMA0708	7/16"-20	1/2"-20	28,5	9,1	17	17
		JUNFSFMA0709	7/16"-20	9/16"-18	29,3	10,0	17	17
		JUNFSFMA0808	1/2"-20	1/2"-20	28,5	9,1	17	17
		JUNFSFMA0909	9/16"-18	9/16"-18	29,3	10,0	17	19
		JUNFSFMA0912	9/16"-18	3/4"-16	29,6	11,1	22	19
		JUNFSFMA1212	3/4"-16	3/4"-16	33,6	11,1	22	24
		JUNFSFMA1214	3/4"-16	7/8"-14	35,4	12,7	27	24
		JUNFSFMA1217	3/4"-16	1"1/16-12	37,2	15,1	32	24
		JUNFSFMA1412	7/8"-14	3/4"-16	36,6	11,1	22	27
		JUNFSFMA1414	7/8"-14	7/8"-14	38,4	12,7	27	27
		JUNFSFMA1417	7/8"-14	1"1/16-12	40,2	15,1	32	27
	JUNFSFMA1712	1"1/16-12	3/4"-16	38,6	11,1	22	32	
	JUNFSFMA1714	1"1/16-12	7/8"-14	40,4	12,7	27	32	
	JUNFSFMA1717	1"1/16-12	1"1/16-12	42,2	15,1	32	32	
	JUNFSFMA1721	1"1/16-12	1"5/16-12	41,8	15,1	38	32	
	290	JUNFSFMA2117	1"5/16-12	1"1/16-12	45,2	15,1	32	38
		JUNFSFMA2121	1"5/16-12	1"5/16-12	44,8	15,1	38	38
	240	JUNFSFMA2126	1"5/16-12	1"5/8-12	46,9	15,1	50	38
		JUNFSFMA2626	1"5/8-12	1"5/8-12	48,9	15,1	50	50
JUNFSFMA3030		1"7/8-12	1"7/8-12	55,0	15,1	55	55	

**ADATTATORE MASCHIO/FEMMINA GIREVOLE**

Filetto Metrico

**MALE/SWIVEL FEMALE ADAPTOR**

Thread Metric



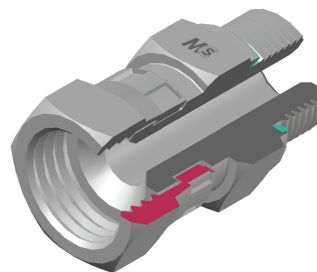
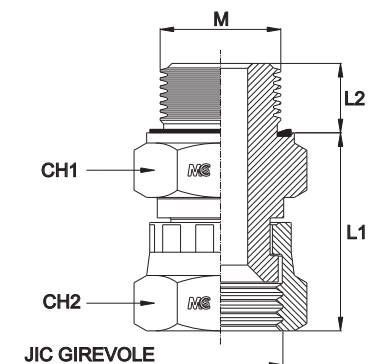
Serie Series	Bar W.P.	Codice Code	JIC 37°	M	L1	L2	CH1	CH2
UNIVERSALE UNIVERSAL	350	JMSFMA07101	7/16"-20	10x1,0	27,5	8,0	14	14
		JMSFMA071215	7/16"-20	12x1,5	28,5	12,0	17	14
		JMSFMA08101	1/2"-20	10x1,0	27,5	8,0	14	17
		JMSFMA081215	1/2"-20	12x1,5	28,5	12,0	17	17
		JMSFMA081415	1/2"-20	14x1,5	28,5	12,0	19	17
		JMSFMA091415	9/16"-18	14x1,5	28,5	12,0	19	19
		JMSFMA091615	9/16"-18	16x1,5	28,5	12,0	22	19
		JMSFMA121615	3/4"-16	16x1,5	32,5	12,0	22	22
		JMSFMA121815	3/4"-16	18x1,5	34,5	12,0	24	22
		JMSFMA141815	7/8"-14	18x1,5	37,5	12,0	24	27
		JMSFMA142015	7/8"-14	20x1,5	38,0	14,0	27	27
		JMSFMA142215	7/8"-14	22x1,5	38,5	14,0	27	27
	JMSFMA172215	1"1/16-12	22x1,5	40,5	14,0	27	32	
	JMSFMA17272	1"1/16-12	27x2,0	-	16,0	32	32	
	290	JMSFMA21272	1"5/16-12	27x2,0	-	16,0	32	41
JMSFMA21332		1"5/16-12	33x2,0	-	18,0	41	41	
240	JMSFMA26422	1"5/8-12	42x2,0	-	20,0	50	50	
	JMSFMA30482	1"7/8-12	48x2,0	-	22,0	55	60	

**ADATTATORE MASCHIO/FEMMINA GIREVOLE CON GUARNIZIONE INCASSATA**

Filetto Metrico

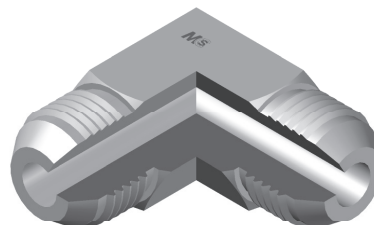
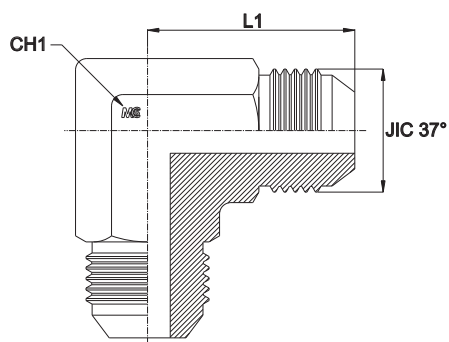
**MALE/SWIVEL FEMALE ADAPTOR WITH CAPTIVE SEAL**

Thread Metric



Serie Series	Bar W.P.	Codice Code	JIC 37°	M	L1	L2	CH1	CH2
UNIVERSALE UNIVERSAL	350	JMSFMA07101V	7/16"-20	10x1	27,5	8,0	14	14
		JMSFMA071215V	7/16"-20	12x1,5	28,5	8,0	17	14
		JMSFMA08101V	1/2"-20	10x1	27,5	8,0	14	17
		JMSFMA081215V	1/2"-20	12x1,5	28,5	8,0	17	17
		JMSFMA081415V	1/2"-20	14x1,5	28,5	12,0	19	17
		JMSFMA091415V	9/16"-18	14x1,5	28,5	12,0	19	19
		JMSFMA091615V	9/16"-18	16x1,5	28,5	12,0	22	19
		JMSFMA121615V	3/4"-16	16x1,5	32,5	12,0	22	22
		JMSFMA121815V	3/4"-16	18x1,5	34,5	12,0	24	22
		JMSFMA141815V	7/8"-14	18x1,5	37,5	12,0	24	27
		JMSFMA142015V	7/8"-14	20x1,5	38,0	14,0	27	27
		JMSFMA142215V	7/8"-14	22x1,5	38,5	14,0	27	27
	JMSFMA172215V	1"1/16-12	22x1,5	40,5	14,0	27	32	
	JMSFMA17272V	1"1/16-12	27x2	-	16,0	32	32	
	290	JMSFMA21272V	1"5/16-12	27x2	-	16,0	32	41
JMSFMA21332V		1"5/16-12	33x2	-	18,0	41	41	
240	JMSFMA26422V	1"5/8-12	42x2	-	20,0	50	50	
	JMSFMA30482V	1"7/8-12	48x2	-	22,0	55	60	

## ADATTATORE A 90° MASCHIO MALE EQUAL ELBOW



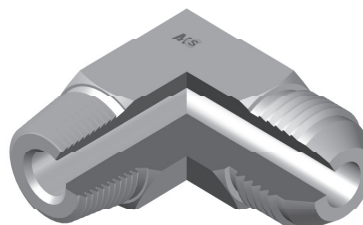
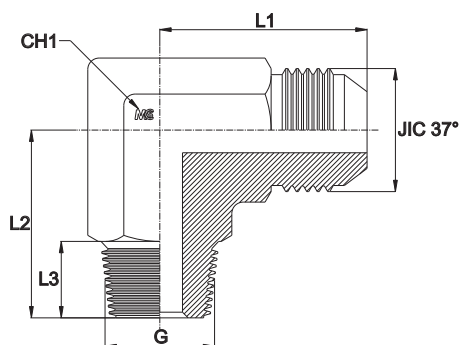
Serie Series	Bar W.P.	Codice Code	Ø Est. Tubo M Tube O.D. M	Ø Est. Tubo W Tube O.D. W	JIC 37°	L1	CH1
UNIVERSALE UNIVERSAL	450	LJMA0707	6	1/4"	7/16"-20	23,0	12
		LJMA0808	8	5/16"	1/2"-20	24,0	14
	350	LJMA0909	10	3/8"	9/16"-18	27,5	14
		LJMA1212	12	1/2"	3/4"-16	32,0	19
		LJMA1414	14-15-16	5/8"	7/8"-14	37,0	22
	290	LJMA1717	18-20	3/4"	1"1/16-12	42,0	27
		LJMA2121	25	1"	1"5/16-12	46,0	33
	240	LJMA2626	28-30-32	1"1/4	1"5/8-12	53,0	41
		LJMA3030	35-38	1"1/2	1"7/8-12	59,0	50
	105	LJMA4040	50	2"	2"1/2-12	77,5	65

**ADATTATORE A 90° MASCHIO**

Filetto Gas Conico

**MALE STUD ELBOW**

Thread BSP Taper



Serie Series	Bar W.P.	Codice Code	Ø Est. Tubo M Tube O.D. M	Ø Est. Tubo W Tube O.D. W	JIC 37°	G	L1	L2	L3	CH1
UNIVERSALE UNIVERSAL	350	LJBSPTMA0702	6	1/4"	7/16"-20	1/8"	23,0	20,0	8,0	12
		LJBSPTMA0704	6	1/4"	7/16"-20	1/4"	24,0	28,0	13,0	14
		LJBSPTMA0802	8	5/16"	1/2"-20	1/8"	24,0	20,0	8,0	12
		LJBSPTMA0804	8	5/16"	1/2"-20	1/4"	24,0	28,0	13,0	14
		LJBSPTMA0902	10	3/8"	9/16"-18	1/8"	25,5	20,0	8,0	12
		LJBSPTMA0904	10	3/8"	9/16"-18	1/4"	27,5	28,0	13,0	14
		LJBSPTMA0906	10	3/8"	9/16"-18	3/8"	29,5	31,0	14,0	19
		LJBSPTMA0908	10	3/8"	9/16"-18	1/2"	31,5	37,5	17,0	22
		LJBSPTMA1204	12	1/2"	3/4"-16	1/4"	32,0	31,0	13,0	14
		LJBSPTMA1206	12	1/2"	3/4"-16	3/8"	32,0	31,0	14,0	19
		LJBSPTMA1208	12	1/2"	3/4"-16	1/2"	34,0	37,5	17,0	22
		LJBSPTMA1212	12	1/2"	3/4"-16	3/4"	36,0	40,0	17,5	27
	LJBSPTMA1406	14-15-16	5/8"	7/8"-14	3/8"	37,0	31,0	14,0	22	
	LJBSPTMA1408	14-15-16	5/8"	7/8"-14	1/2"	37,0	37,5	17,0	22	
	LJBSPTMA1412	14-15-16	5/8"	7/8"-14	3/4"	39,0	40,0	17,5	27	
	LJBSPTMA1708	18-20	3/4"	1"1/16-12	1/2"	42,0	37,5	17,0	27	
	LJBSPTMA1712	18-20	3/4"	1"1/16-12	3/4"	42,0	40,0	17,5	27	
	290	LJBSPTMA1716	18-20	3/4"	1"1/16-12	1"	45,0	50,0	22,0	33
		LJBSPTMA2112	25	1"	1"5/16-12	3/4"	46,0	40,0	17,5	27
		LJBSPTMA2116	25	1"	1"5/16-12	1"	46,0	50,0	22,0	33
240	LJBSPTMA2616	28-30-32	1"1/4	1"5/8-12	1"	53,0	51,0	22,0	33	
	LJBSPTMA2620	28-30-32	1"1/4	1"5/8-12	1"1/4	53,0	60,0	24,0	41	
	LJBSPTMA3024	35-38	1"1/2	1"7/8-12	1"1/2	59,0	67,0	24,0	50	

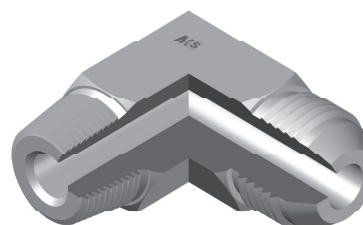
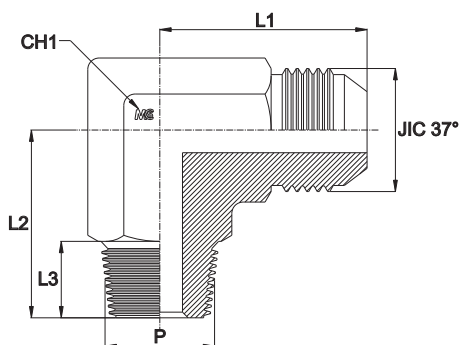


**ADATTATORE A 90° MASCHIO**

Filetto NPT

**MALE STUD ELBOW**

Thread NPT



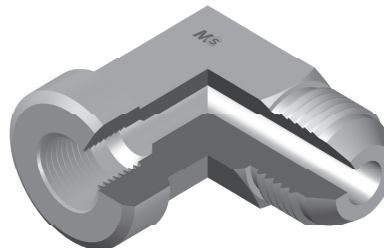
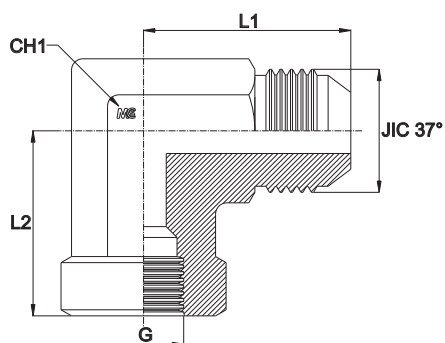
Serie Series	Bar W.P.	Codice Code	Ø Est. Tubo M Tube O.D. M	Ø Est. Tubo W Tube O.D. W	JIC 37°	P	L1	L2	L3	CH1
UNIVERSALE UNIVERSAL	350	LJNPTMA0702	6	1/4"	7/16"-20	1/8"	23,0	20,0	10,0	12
		LJNPTMA0704	6	1/4"	7/16"-20	1/4"	24,0	28,0	14,0	14
		LJNPTMA0706	6	1/4"	7/16"-20	3/8"	29,0	31,0	14,0	19
		LJNPTMA0708	6	1/4"	7/16"-20	1/2"	31,0	37,5	19,0	22
		LJNPTMA0802	8	5/16"	1/2"-20	1/8"	24,0	20,0	10,0	12
		LJNPTMA0804	8	5/16"	1/2"-20	1/4"	24,0	28,0	14,0	14
		LJNPTMA0902	10	3/8"	9/16"-18	1/8"	25,5	20,0	10,0	12
		LJNPTMA0904	10	3/8"	9/16"-18	1/4"	27,5	28,0	14,0	14
		LJNPTMA0906	10	3/8"	9/16"-18	3/8"	29,5	31,0	14,0	19
		LJNPTMA0908	10	3/8"	9/16"-18	1/2"	31,5	37,5	19,0	22
		LJNPTMA1204	12	1/2"	3/4"-16	1/4"	32,0	31,0	14,0	14
		LJNPTMA1206	12	1/2"	3/4"-16	3/8"	32,0	31,0	14,0	19
	LJNPTMA1208	12	1/2"	3/4"-16	1/2"	34,0	37,5	19,0	22	
	LJNPTMA1212	12	1/2"	3/4"-16	3/4"	36,0	40,0	19,0	27	
	LJNPTMA1406	14-15-16	5/8"	7/8"-14	3/8"	37,0	31,0	14,0	22	
	LJNPTMA1408	14-15-16	5/8"	7/8"-14	1/2"	37,0	37,5	19,0	22	
	LJNPTMA1412	14-15-16	5/8"	7/8"-14	3/4"	39,0	40,0	19,0	27	
	LJNPTMA1708	18-20	3/4"	1"1/16-12	1/2"	42,0	37,5	19,0	27	
	LJNPTMA1712	18-20	3/4"	1"1/16-12	3/4"	42,0	40,0	19,0	27	
	LJNPTMA1716	18-20	3/4"	1"1/16-12	1"	45,0	50,0	19,0	33	
	LJNPTMA2112	25	1"	1"5/16-12	3/4"	46,0	40,0	19,0	27	
	LJNPTMA2116	25	1"	1"5/16-12	1"	46,0	50,0	19,0	33	
	LJNPTMA2120	25	1"	1"5/16-12	1"1/4	52,0	60,0	24,0	41	
	LJNPTMA2616	28-30-32	1"1/4	1"5/8-12	1"	53,0	51,0	19,0	33	
LJNPTMA2620	28-30-32	1"1/4	1"5/8-12	1"1/4	53,0	60,0	24,0	41		
LJNPTMA2624	28-30-32	1"1/4	1"5/8-12	1"1/2	55,0	67,0	25,0	50		
LJNPTMA3020	35-38	1"1/2	1"7/8-12	1"1/4	59,0	66,0	24,0	41		
LJNPTMA3024	35-38	1"1/2	1"7/8-12	1"1/2	59,0	67,0	25,0	50		

**ADATTATORE A 90° MASCHIO/FEMMINA FISSA**

Filetto Gas Cilindrico

**MALE/FEMALE STUD ELBOW**

Thread BSP Parallel



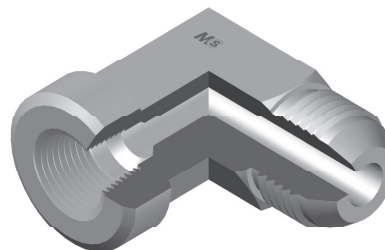
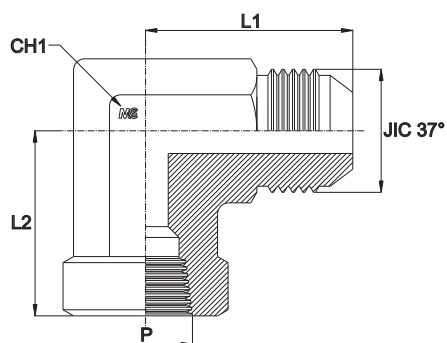
Serie Series	Bar W.P.	Codice Code	Ø Est. Tubo M Tube O.D. M	Ø Est. Tubo W Tube O.D. W	JIC 37°	G	L1	L2	CH1
UNIVERSALE UNIVERSAL	350	LJBSPMFFA0702	6	1/4"	7/16"-20	1/8"	27,5	17,0	14
		LJBSPMFFA0704	6	1/4"	7/16"-20	1/4"	29,0	22,5	19
		LJBSPMFFA0802	8	5/16"	1/2"-20	1/8"	27,5	17,0	14
		LJBSPMFFA0804	8	5/16"	1/2"-20	1/4"	29,0	22,5	19
		LJBSPMFFA0902	10	3/8"	9/16"-18	1/8"	27,5	17,0	14
		LJBSPMFFA0904	10	3/8"	9/16"-18	1/4"	31,0	22,5	19
		LJBSPMFFA0906	10	3/8"	9/16"-18	3/8"	31,5	26,0	22
		LJBSPMFFA1204	12	1/2"	3/4"-16	1/4"	32,0	22,5	19
		LJBSPMFFA1206	12	1/2"	3/4"-16	3/8"	36,0	26,0	22
		LJBSPMFFA1208	12	1/2"	3/4"-16	1/2"	36,0	31,0	27
	LJBSPMFFA1408	14-15-16	5/8"	7/8"-14	1/2"	42,0	31,0	27	
	LJBSPMFFA1708	18-20	3/4"	1"1/16-12	1/2"	42,0	31,0	27	
	LJBSPMFFA1712	18-20	3/4"	1"1/16-12	3/4"	48,0	34,5	33	
	290	LJBSPMFFA2116	25	1"	1"5/16-12	1"	55,0	41,0	41
	240	LJBSPMFFA2616	28-30-32	1"1/4	1"5/8-12	1"	55,0	41,0	41
		LJBSPMFFA2620	28-30-32	1"1/4	1"5/8-12	1"1/4	59,0	43,0	50
LJBSPMFFA3020		35-38	1"1/2	1"7/8-12	1"1/4	59,0	43,0	50	
LJBSPMFFA3024		35-38	1"1/2	1"7/8-12	1"1/2	73,0	53,0	65	

**ADATTATORE A 90° MASCHIO/FEMMINA FISSA**

Filetto NPT

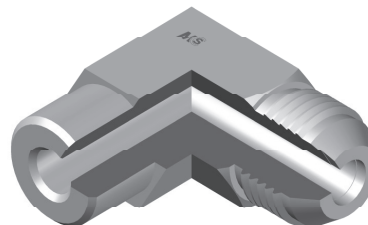
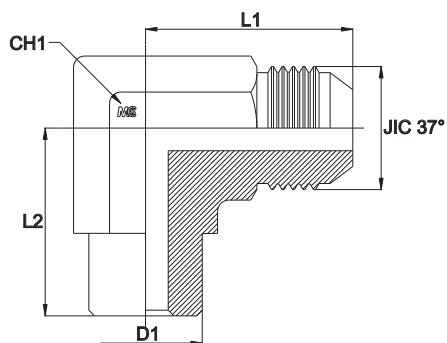
**MALE/FEMALE STUD ELBOW**

Thread NPT



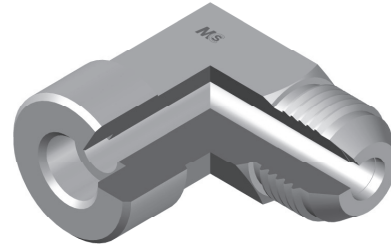
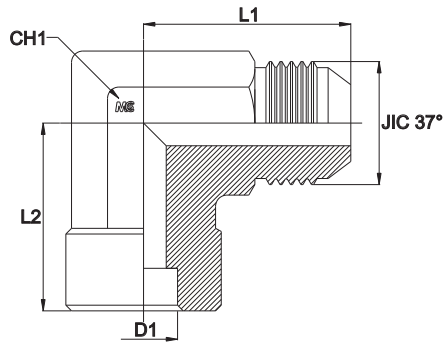
Serie Series	Bar W.P.	Codice Code	Ø Est. Tubo M Tube O.D. M	Ø Est. Tubo W Tube O.D. W	JIC 37°	P	L1	L2	CH1
UNIVERSALE UNIVERSAL	350	LJNPTMFFA0702	6	1/4"	7/16"-20	1/8"	27,5	17,0	14
		LJNPTMFFA0704	6	1/4"	7/16"-20	1/4"	29,0	22,5	19
		LJNPTMFFA0802	8	5/16"	1/2"-20	1/8"	27,5	17,0	14
		LJNPTMFFA0804	8	5/16"	1/2"-20	1/4"	29,0	22,5	19
		LJNPTMFFA0902	10	3/8"	9/16"-18	1/8"	27,5	17,0	14
		LJNPTMFFA0904	10	3/8"	9/16"-18	1/4"	31,0	22,5	19
		LJNPTMFFA0906	10	3/8"	9/16"-18	3/8"	31,5	26,0	22
		LJNPTMFFA1204	12	1/2"	3/4"-16	1/4"	32,0	22,5	19
		LJNPTMFFA1206	12	1/2"	3/4"-16	3/8"	36,0	26,0	22
		LJNPTMFFA1208	12	1/2"	3/4"-16	1/2"	36,0	31,0	27
		LJNPTMFFA1408	14-15-16	5/8"	7/8"-14	1/2"	42,0	31,0	27
		LJNPTMFFA1708	18-20	3/4"	1" 1/16-12	1/2"	42,0	31,0	27
		LJNPTMFFA1712	18-20	3/4"	1" 1/16-12	3/4"	48,0	34,5	33
		290	LJNPTMFFA2116	25	1"	1" 5/16-12	1"	55,0	41,0
240	LJNPTMFFA2620	28-30-32	1" 1/4	1" 5/8-12	1" 1/4	59,0	43,0	50	
	LJNPTMFFA3024	35-38	1" 1/2	1" 7/8-12	1" 1/2	73,0	53,0	65	

## ADATTATORE A 90° A CODOLO STUD STANDPIPE ELBOW



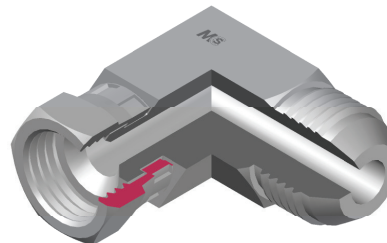
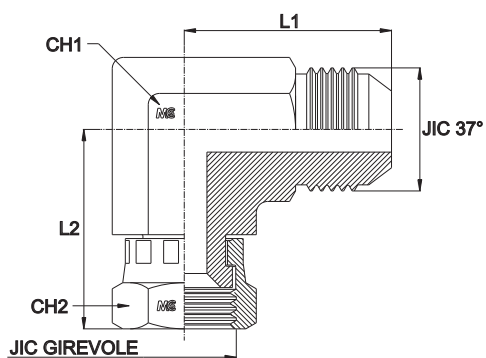
Serie Series	Bar W.P.	Codice Code	Ø Est. Tubo M Tube O.D. M	Ø Est. Tubo W Tube O.D. W	JIC 37°	L1	L2	D1	CH1
UNIVERSALE UNIVERSAL	450	LJWMA0715	6	1/4"	7/16"-20	31,0	22,5	15,0	14
		LJWMA0815	8	5/16"	1/2"-20	31,0	22,5	15,0	14
		LJWMA0816	8	5/16"	1/2"-20	27,0	16,0	16,0	14
	350	LJWMA0915	10	3/8"	9/16"-18	31,0	22,5	15,0	14
		LJWMA0916	10	3/8"	9/16"-18	27,0	16,0	16,0	14
		LJWMA0922	10	3/8"	9/16"-18	29,0	18,0	22,0	19
		LJWMA1218	12	1/2"	3/4"-16	34,0	20,0	18,0	22
		LJWMA1220	12	1/2"	3/4"-16	36,0	26,0	20,0	19
		LJWMA1222	12	1/2"	3/4"-16	31,5	18,0	22,0	19
		LJWMA1422	14-15-16	5/8"	7/8"-14	36,5	20,0	22,0	22
		LJWMA1423	14-15-16	5/8"	7/8"-14	41,5	31,0	23,0	22
		LJWMA1427	14-15-16	5/8"	7/8"-14	40,0	23,0	27,0	27
	LJWMA1728	18-20	3/4"	1"1/16-12	48,0	34,5	28,0	27	
	290	LJWMA2135	25	1"	1"5/16-12	52,0	41,0	35,0	33
	240	LJWMA2642	28-30-32	1"1/4	1"5/8-12	59,0	43,0	42,0	41
		LJWMA3050	35-38	1"1/2	1"7/8-12	66,0	53,0	50,0	50

## ADATTATORE A 90° A SALDARE FEMMINA JIC WELDING FEMALE STUD ELBOW



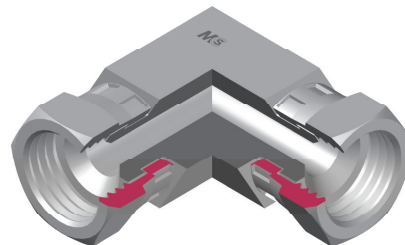
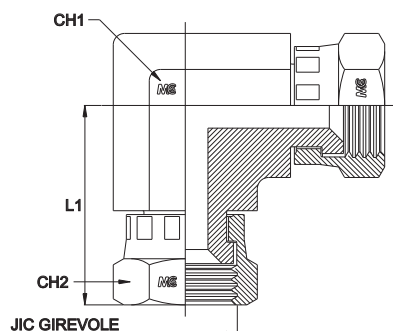
Serie Series	Bar W.P.	Codice Code	Ø Est. Tubo M Tube O.D. M	Ø Est. Tubo W Tube O.D. W	JIC 37°	L1	L2	D1	CH1
UNIVERSALE UNIVERSAL	450	LJWMA07T06	6	1/4"	7/16"-20	23,0	10,0	6,0	12
		LJWMA08T10	8	5/16"	1/2"-20	27,0	16,0	10,0	14
	350	LJWMA09T10	10	3/8"	9/16"-18	27,5	16,0	10,0	14
		LJWMA09T12	10	3/8"	9/16"-18	29,5	18,0	12,0	19
		LJWMA12T12	12	1/2"	3/4"-16	32,0	18,0	12,0	19
		LJWMA12T16	12	1/2"	3/4"-16	34,0	20,0	16,0	22
		LJWMA14T14	14-15-16	5/8"	7/8"-14	37,0	20,0	14,0	22
		LJWMA14T16	14-15-16	5/8"	7/8"-14	37,0	20,0	16,0	22
		LJWMA14T18	14-15-16	5/8"	7/8"-14	40,0	23,0	18,0	27
		LJWMA14T22	14-15-16	5/8"	7/8"-14	40,0	23,0	22,0	27
		LJWMA17T18	18-20	3/4"	1"1/16-12	42,0	23,0	18,0	27
		LJWMA17T20	18-20	3/4"	1"1/16-12	42,0	23,0	20,0	27
	LJWMA17T25	18-20	3/4"	1"1/16-12	46,0	26,0	25,0	33	
	290	LJWMA21T25	25	1"	1"5/16-12	46,0	26,0	25,0	33
		LJWMA21T32	25	1"	1"5/16-12	51,0	33,0	32,0	41
	240	LJWMA26T30	28-30-32	1"1/4	1"5/8-12	53,0	33,0	30,0	41
		LJWMA26T32	28-30-32	1"1/4	1"5/8-12	53,0	33,0	32,0	41
		LJWMA26T38	28-30-32	1"1/2	1"5/8-12	56,0	35,0	38,0	50
		LJWMA30T38	35-38	1"1/2	1"7/8-12	59,0	35,0	38,0	50

## ADATTATORE A 90° MASCHIO/FEMMINA GIREVOLE MALE/SWIVEL FEMALE STUD ELBOW



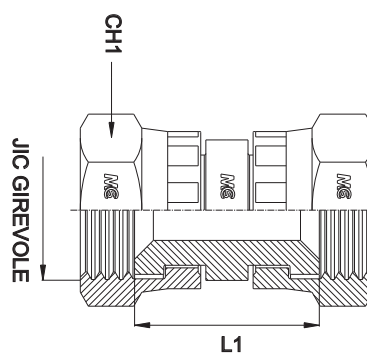
Serie Series	Bar W.P.	Codice Code	Ø Est. Tubo M Tube O.D. M	Ø Est. Tubo W Tube O.D. W	JIC 37°	L1	L2	CH1	CH2
UNIVERSALE UNIVERSAL	450	LJMSFA07	6	1/4"	7/16"-20	22,5	25,2	12	17
		LJMSFA08	8	5/16"	1/2"-20	24,0	25,9	14	17
	350	LJMSFA09	10	3/8"	9/16"-18	27,0	30,8	14	19
		LJMSFA12	12	1/2"	3/4"-16	32,0	33,9	19	24
		LJMSFA14	14-15-16	5/8"	7/8"-14	37,0	40,9	22	27
	290	LJMSFA17	18-20	3/4"	1"1/16-12	42,0	42,1	27	32
		LJMSFA21	25	1"	1"5/16-12	46,0	49,7	33	38
	240	LJMSFA26	28-30-32	1"1/4	1"5/8-12	52,5	56,3	41	50
		LJMSFA30	35-38	1"1/2	1"7/8-12	59,0	64,2	50	55

## ADATTATORE A 90° FEMMINA GIREVOLE SWIVEL FEMALE EQUAL ELBOW



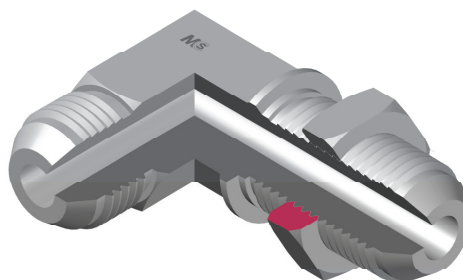
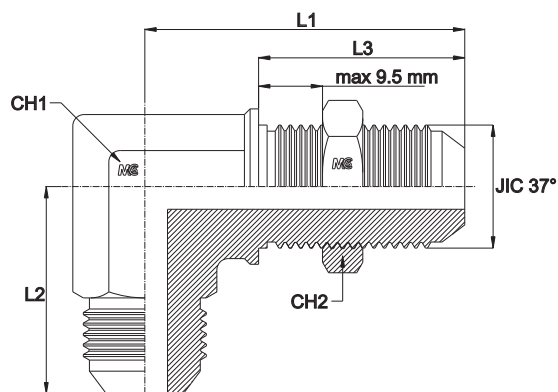
Serie Series	Bar W.P.	Codice Code	Ø Est. Tubo M Tube O.D. M	Ø Est. Tubo W Tube O.D. W	JIC 37°	L1	CH1	CH2
UNIVERSALE UNIVERSAL	450	LJSFA07	6	1/4"	7/16"-20	25,2	12	17
		LJSFA08	8	5/16"	1/2"-20	25,9	14	17
	350	LJSFA09	10	3/8"	9/16"-18	30,8	14	19
		LJSFA12	12	1/2"	3/4"-16	33,9	19	24
		LJSFA14	14-15-16	5/8"	7/8"-14	40,9	22	27
		LJSFA17	18-20	3/4"	1"1/16-12	42,1	27	32
	290	LJSFA21	25	1"	1"5/16-12	49,7	33	38
	240	LJSFA26	28-30-32	1"1/4	1"5/8-12	56,3	41	50
		LJSFA30	35-38	1"1/2	1"7/8-12	64,2	50	55

## ADATTATORE FEMMINA GIREVOLE BOTH SWIVEL FEMALE ADAPTOR



Serie Series	Bar W.P.	Codice Code	Ø Est. Tubo M Tube O.D. M	Ø Est. Tubo W Tube O.D. W	JIC 37°	L1	CH1
UNIVERSALE UNIVERSAL	450	JSFA0707	6	1/4"	7/16"-20	25,5	17
		JSFA0808	8	5/16"	1/2"-20	20,5	17
	350	JSFA0909	10	3/8"	9/16"-18	20,5	19
		JSFA1212	12	1/2"	3/4"-16	24,5	24
		JSFA1414	14-15-16	5/8"	7/8"-14	24,5	27
		JSFA1717	18-20	3/4"	1"1/16-12	32,0	32
	290	JSFA2121	25	1"	1"5/16-12	35,0	38
	240	JSFA2626	28-30-32	1"1/4	1"5/8-12	40,0	50
		JSFA3030	35-38	1"1/2	1"7/8-12	41,5	55

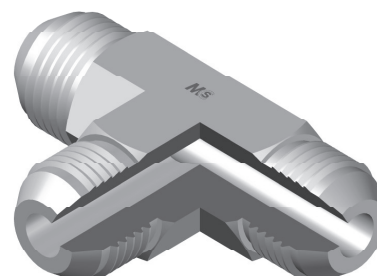
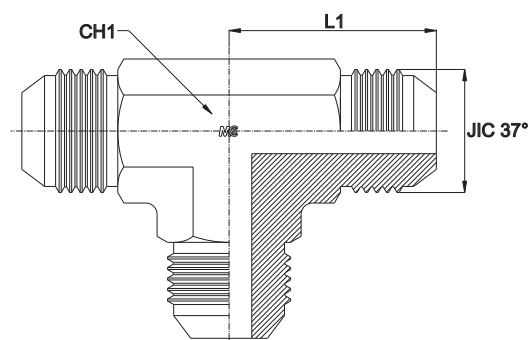
## PASSAPARETE A 90° CON DADO BULKHEAD MALE ELBOW (WITH NUT)



Serie Series	Bar W.P.	Codice Code	Ø Est. Tubo M Tube O.D. M	Ø Est. Tubo W Tube O.D. W	JIC 37°	L1	L2	L3	CH1	CH2
UNIVERSALE UNIVERSAL	450	LJBMA07	6	1/4"	7/16"-20	40,5	24,5	28,3	12	17
		LJBMA08	8	5/16"	1/2"-20	43,5	27,0	28,3	14	19
	350	LJBMA09	10	3/8"	9/16"-18	46,0	27,5	30,1	14	22
		LJBMA12	12	1/2"	3/4"-16	53,5	34,5	35,0	19	24
		LJBMA14	14-15-16	5/8"	7/8"-14	60,5	39,5	38,5	22	30
	290	LJBMA17	18-20	3/4"	1"1/16-12	68,0	45,0	42,8	27	36
		LJBMA21	25	1"	1"5/16-12	71,0	49,5	42,8	33	41
	240	LJBMA26	28-30-32	1"1/4	1"5/8-12	79,0	55,0	44,1	41	50
		LJBMA30	35-38	1"1/2	1"7/8-12	87,0	59,5	44,3	50	55



## ADATTATORE A "T" MASCHIO MALE EQUAL TEE



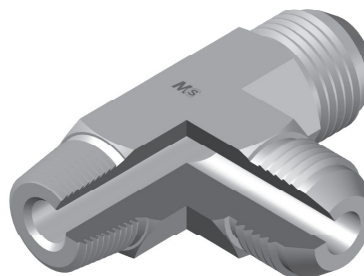
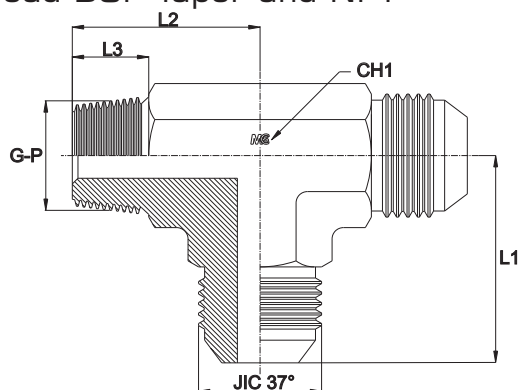
Serie Series	Bar W.P.	Codice Code	Ø Est. Tubo M Tube O.D. M	Ø Est. Tubo W Tube O.D. W	JIC 37°	L1	CH1
UNIVERSALE UNIVERSAL	450	TJMA0707	6	1/4"	7/16"-20	23,0	12
		TJMA0808	8	5/16"	1/2"-20	24,0	14
	350	TJMA0909	10	3/8"	9/16"-18	27,5	14
		TJMA1212	12	1/2"	3/4"-16	32,0	19
		TJMA1414	14-15-16	5/8"	7/8"-14	37,0	22
	290	TJMA1717	18-20	3/4"	1"1/16-12	42,0	27
		TJMA2121	25	1"	1"5/16-12	46,0	33
	240	TJMA2626	28-30-32	1"1/4	1"5/8-12	53,0	41
		TJMA3030	35-38	1"1/2	1"7/8-12	59,0	50
	105	TJMA4040	50	2"	2"1/2-12	77,5	65

## ADATTATORE A "T" LATERALE MASCHIO

Filetto Gas Conico e NPT

### MALE STUD BARREL TEE

Thread BSP Taper and NPT



Serie Series	Bar W.P.	Codice Code	Ø Est. Tubo M Tube O.D. M	Ø Est. Tubo W Tube O.D. W	JIC 37°	G	L1	L2	L3	CH1
UNIVERSALE UNIVERSAL	350	TLJBSPTMA0702	6	1/4"	7/16"-20	1/8"	23,0	20,0	8,0	12
		TLJBSPTMA0704	6	1/4"	7/16"-20	1/4"	24,0	28,0	13,0	14
		TLJBSPTMA0802	8	5/16"	1/2"-20	1/8"	24,0	20,0	8,0	12
		TLJBSPTMA0804	8	5/16"	1/2"-20	1/4"	24,0	28,0	13,0	14
		TLJBSPTMA0904	10	3/8"	9/16"-18	1/4"	27,5	28,0	13,0	14
		TLJBSPTMA0906	10	3/8"	9/16"-18	3/8"	29,5	31,0	14,0	19
		TLJBSPTMA1206	12	1/2"	3/4"-16	3/8"	32,0	31,0	14,0	19
		TLJBSPTMA1208	12	1/2"	3/4"-16	1/2"	34,0	37,5	17,0	22
		TLJBSPTMA1406	14-15-16	5/8"	7/8"-14	3/8"	37,0	31,0	14,0	22
		TLJBSPTMA1408	14-15-16	5/8"	7/8"-14	1/2"	37,0	37,5	17,0	22
		TLJBSPTMA1412	14-15-16	5/8"	7/8"-14	3/4"	39,0	40,0	17,5	27
	TLJBSPTMA1708	18-20	3/4"	1"1/16-12	1/2"	42,0	37,5	17,0	22	
	TLJBSPTMA1712	18-20	3/4"	1"1/16-12	3/4"	42,0	40,0	17,5	27	
	290	TLJBSPTMA2112	25	1"	1"5/16-12	3/4"	46,0	40,0	17,5	27
	TLJBSPTMA2116	25	1"	1"5/16-12	1"	46,0	50,0	22,0	33	
	240	TLJBSPTMA2616	28-30-32	1"1/4	1"5/8-12	1"	53,0	51,0	22,0	33
	TLJBSPTMA2620	28-30-32	1"1/4	1"5/8-12	1"1/4	53,0	60,0	24,0	41	
	TLJBSPTMA3024	35-38	1"1/2	1"7/8-12	1"1/2	59,0	67,0	24,0	50	

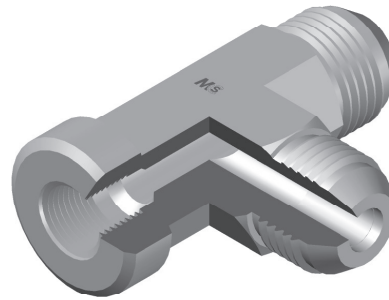
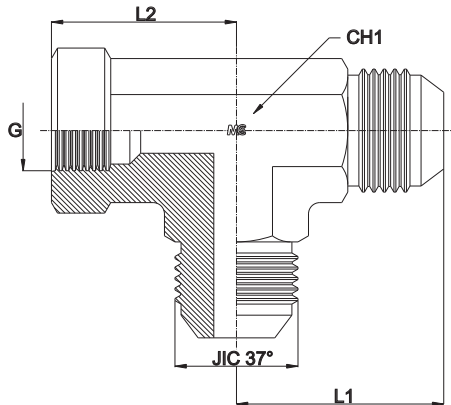
Serie Series	Bar W.P.	Codice Code	Ø Est. Tubo M Tube O.D. M	Ø Est. Tubo W Tube O.D. W	JIC 37°	P	L1	L2	L3	CH1
UNIVERSALE UNIVERSAL	350	TLJNPTMA0702	6	1/4"	7/16"-20	1/8"	23,0	20,0	10,0	12
		TLJNPTMA0704	6	1/4"	7/16"-20	1/4"	24,0	28,0	14,0	14
		TLJNPTMA0802	8	5/16"	1/2"-20	1/8"	24,0	20,0	10,0	12
		TLJNPTMA0804	8	5/16"	1/2"-20	1/4"	24,0	28,0	14,0	14
		TLJNPTMA0904	10	3/8"	9/16"-18	1/4"	27,5	28,0	14,0	14
		TLJNPTMA0906	10	3/8"	9/16"-18	3/8"	29,5	31,0	14,0	19
		TLJNPTMA1206	12	1/2"	3/4"-16	3/8"	32,0	31,0	14,0	19
		TLJNPTMA1208	12	1/2"	3/4"-16	1/2"	34,0	37,5	19,0	22
		TLJNPTMA1406	14-15-16	5/8"	7/8"-14	3/8"	37,0	31,0	14,0	22
		TLJNPTMA1408	14-15-16	5/8"	7/8"-14	1/2"	37,0	37,5	19,0	22
		TLJNPTMA1412	14-15-16	5/8"	7/8"-14	3/4"	39,0	40,0	19,0	27
	TLJNPTMA1708	18-20	3/4"	1"1/16-12	1/2"	42,0	37,5	19,0	22	
	TLJNPTMA1712	18-20	3/4"	1"1/16-12	3/4"	42,0	40,0	19,0	27	
	290	TLJNPTMA2112	25	1"	1"5/16-12	3/4"	46,0	40,0	19,0	27
	TLJNPTMA2116	25	1"	1"5/16-12	1"	46,0	50,0	19,0	33	
	240	TLJNPTMA2616	28-30-32	1"1/4	1"5/8-12	1"	53,0	51,0	19,0	33
	TLJNPTMA2620	28-30-32	1"1/4	1"5/8-12	1"1/4	53,0	60,0	24,0	41	
	TLJNPTMA3024	35-38	1"1/2	1"7/8-12	1"1/2	59,0	67,0	25,0	50	

**ADATTATORE A "T" LATERALE MASCHIO/FEMMINA FISSA**

Filetto Gas Cilindrico

**MALE/FEMALE STUD BARREL TEE**

Thread BSP Parallel



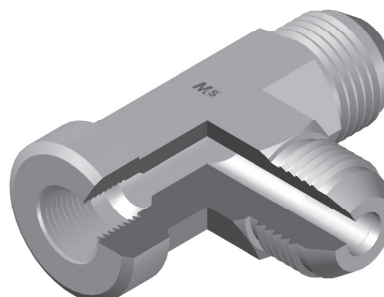
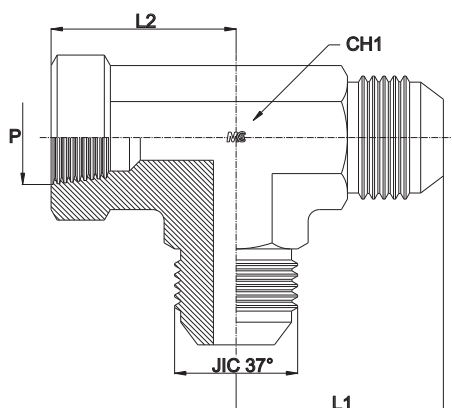
Serie Series	Bar W.P.	Codice Code	Ø Est. Tubo M Tube O.D. M	Ø Est. Tubo W Tube O.D. W	JIC 37°	G	L1	L2	CH1
UNIVERSALE UNIVERSAL	350	TLJBSPMFFA0702	6	1/4"	7/16"-20	1/8"	27,5	17,0	14
		TLJBSPMFFA0704	6	1/4"	7/16"-20	1/4"	29,0	22,5	19
		TLJBSPMFFA0802	8	5/16"	1/2"-20	1/8"	27,5	17,0	14
		TLJBSPMFFA0804	8	5/16"	1/2"-20	1/4"	29,0	22,5	19
		TLJBSPMFFA0902	10	3/8"	9/16"-18	1/8"	27,5	17,0	14
		TLJBSPMFFA0904	10	3/8"	9/16"-18	1/4"	31,0	22,5	19
		TLJBSPMFFA0906	10	3/8"	9/16"-18	3/8"	31,5	26,0	22
		TLJBSPMFFA1204	12	1/2"	3/4"-16	1/4"	32,0	22,5	19
		TLJBSPMFFA1206	12	1/2"	3/4"-16	3/8"	36,0	26,0	22
		TLJBSPMFFA1208	12	1/2"	3/4"-16	1/2"	36,0	31,0	27
	TLJBSPMFFA1408	14-15-16	5/8"	7/8"-14	1/2"	42,0	31,0	27	
	TLJBSPMFFA1708	18-20	3/4"	1" 1/16-12	1/2"	42,0	31,0	27	
	TLJBSPMFFA1712	18-20	3/4"	1" 1/16-12	3/4"	48,0	34,5	33	
	290	TLJBSPMFFA2116	25	1"	1" 5/16-12	1"	55,0	41,0	41
240	TLJBSPMFFA2616	28-30-32	1" 1/4	1" 5/8-12	1"	59,0	41,0	41	
	TLJBSPMFFA2620	28-30-32	1" 1/4	1" 5/8-12	1" 1/4	55,0	43,0	50	
	TLJBSPMFFA3020	35-38	1" 1/2	1" 7/8-12	1" 1/4	59,0	43,0	50	
	TLJBSPMFFA3024	35-38	1" 1/2	1" 7/8-12	1" 1/2	73,0	53,0	65	

**ADATTATORE A "T" LATERALE MASCHIO/FEMMINA FISSA**

Filetto NPT

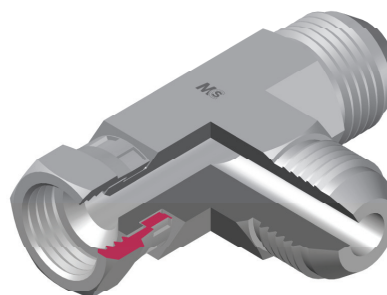
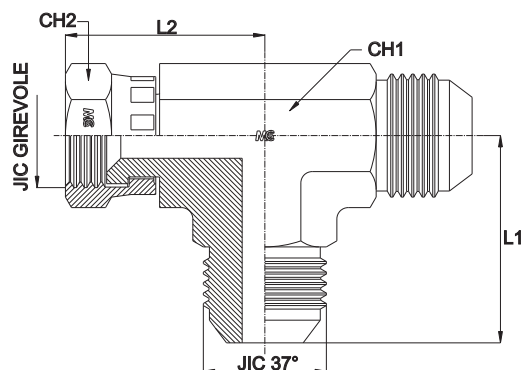
**MALE/FEMALE STUD BARREL TEE**

Thread NPT



Serie Series	Bar W.P.	Codice Code	Ø Est. Tubo M Tube O.D. M	Ø Est. Tubo W Tube O.D. W	JIC 37°	G	L1	L2	CH1
UNIVERSALE UNIVERSAL	350	TLJNPTMFFA0702	6	1/4"	7/16"-20	1/8"	27,5	17,0	14
		TLJNPTMFFA0704	6	1/4"	7/16"-20	1/4"	29,0	22,5	19
		TLJNPTMFFA0802	8	5/16"	1/2"-20	1/8"	27,5	17,0	14
		TLJNPTMFFA0804	8	5/16"	1/2"-20	1/4"	29,0	22,5	19
		TLJNPTMFFA0902	10	3/8"	9/16"-18	1/8"	27,5	17,0	14
		TLJNPTMFFA0904	10	3/8"	9/16"-18	1/4"	31,0	22,5	19
		TLJNPTMFFA0906	10	3/8"	9/16"-18	3/8"	31,5	26,0	22
		TLJNPTMFFA1204	12	1/2"	3/4"-16	1/4"	32,0	22,5	19
		TLJNPTMFFA1206	12	1/2"	3/4"-16	3/8"	36,0	26,0	22
		TLJNPTMFFA1208	12	1/2"	3/4"-16	1/2"	36,0	31,0	27
		TLJNPTMFFA1408	14-15-16	5/8"	7/8"-14	1/2"	42,0	31,0	27
		TLJNPTMFFA1708	18-20	3/4"	1"1/16-12	1/2"	42,0	31,0	27
	TLJNPTMFFA1712	18-20	3/4"	1"1/16-12	3/4"	48,0	34,5	33	
	290	TLJNPTMFFA2116	25	1"	1"5/16-12	1"	55,0	41,0	41
240	TLJNPTMFFA2620	28-30-32	1"1/4	1"5/8-12	1"1/4	59,0	43,0	50	
	TLJNPTMFFA3024	35-38	1"1/2	1"7/8-12	1"1/2	73,0	53,0	65	

## ADATTATORE A "T" LATERALE MASCHIO/FEMMINA GIREVOLE MALE/SWIVEL FEMALE STUD BARREL TEE



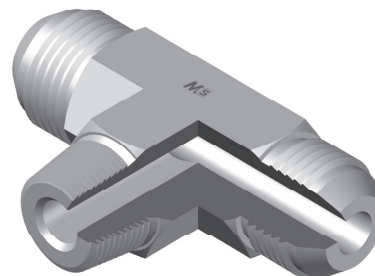
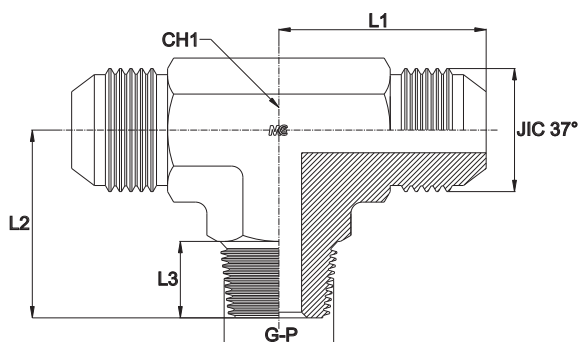
Serie Series	Bar W.P.	Codice Code	Ø Est. Tubo M Tube O.D. M	Ø Est. Tubo W Tube O.D. W	JIC 37°	L1	L2	CH1	CH2
UNIVERSALE UNIVERSAL	450	TLJMSFA07	6	1/4"	7/16"-20	23,0	25,2	12	17
		TLJMSFA08	8	5/16"	1/2"-20	24,0	25,9	14	17
	350	TLJMSFA09	10	3/8"	9/16"-18	27,5	30,8	14	19
		TLJMSFA12	12	1/2"	3/4"-16	32,0	33,9	19	24
		TLJMSFA14	14-15-16	5/8"	7/8"-14	37,0	40,9	22	27
	290	TLJMSFA17	18-20	3/4"	1"1/16-12	42,0	42,1	27	32
		TLJMSFA21	25	1"	1"5/16-12	46,0	49,7	33	38
	240	TLJMSFA26	28-30-32	1"1/4	1"5/8-12	53,0	56,3	41	50
		TLJMSFA30	35-38	1"1/2	1"7/8-12	59,0	64,2	50	55

# ADATTATORE MASCHIO A "T" CENTRALE

Filetto Gas Conico e NPT

## MALE STUD BRANCH TEE

Thread BSP Taper and NPT



Serie Series	Bar W.P.	Codice Code	Ø Est. Tubo M Tube O.D. M	Ø Est. Tubo W Tube O.D. W	JIC 37°	G	L1	L2	L3	CH1	
UNIVERSALE UNIVERSAL	350	TCJBSPTMA0702	6	1/4"	7/16"-20	1/8"	23,0	20,0	8,0	12	
		TCJBSPTMA0704	6	1/4"	7/16"-20	1/4"	24,0	28,0	13,0	14	
		TCJBSPTMA0802	8	5/16"	1/2"-20	1/8"	24,0	20,0	8,0	12	
		TCJBSPTMA0804	8	5/16"	1/2"-20	1/4"	24,0	28,0	13,0	14	
		TCJBSPTMA0904	10	3/8"	9/16"-18	1/4"	27,5	28,0	13,0	14	
		TCJBSPTMA0906	10	3/8"	9/16"-18	3/8"	29,5	31,0	14,0	19	
		TCJBSPTMA1206	12	1/2"	3/4"-16	3/8"	32,0	31,0	14,0	19	
		TCJBSPTMA1208	12	1/2"	3/4"-16	1/2"	34,0	37,5	17,0	22	
		TCJBSPTMA1406	14-15-16	5/8"	7/8"-14	3/8"	37,0	31,0	14,0	22	
		TCJBSPTMA1408	14-15-16	5/8"	7/8"-14	1/2"	37,0	37,5	17,0	22	
		TCJBSPTMA1412	14-15-16	5/8"	7/8"-14	3/4"	39,0	40,0	17,5	27	
		TCJBSPTMA1708	18-20	3/4"	1"1/16-12	1/2"	42,0	37,5	17,0	22	
	TCJBSPTMA1712	18-20	3/4"	1"1/16-12	3/4"	42,0	40,0	17,5	27		
	290	TCJBSPTMA2112	25	1"	1"5/16-12	3/4"	46,0	40,0	17,5	27	
		TCJBSPTMA2116	25	1"	1"5/16-12	1"	46,0	50,0	22,0	33	
	240	TCJBSPTMA2616	28-30-32	1"1/4	1"5/8-12	1"	53,0	51,0	22,0	33	
		TCJBSPTMA2620	28-30-32	1"1/4	1"5/8-12	1"1/4	53,0	60,0	24,0	41	
			TCJBSPTMA3024	35-38	1"1/2	1"7/8-12	1"1/2	59,0	67,0	24,0	50

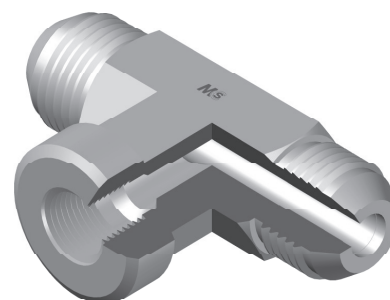
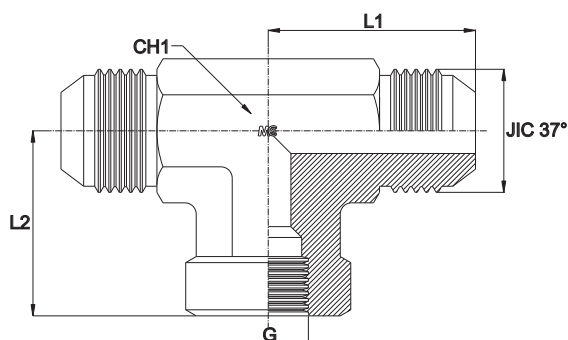
Serie Series	Bar W.P.	Codice Code	Ø Est. Tubo M Tube O.D. M	Ø Est. Tubo W Tube O.D. W	JIC 37°	P	L1	L2	L3	CH1	
UNIVERSALE UNIVERSAL	350	TCJNPTMA0702	6	1/4"	7/16"-20	1/8"	23,0	20,0	10,0	12	
		TCJNPTMA0704	6	1/4"	7/16"-20	1/4"	24,0	28,0	14,0	14	
		TCJNPTMA0802	8	5/16"	1/2"-20	1/8"	24,0	20,0	10,0	12	
		TCJNPTMA0804	8	5/16"	1/2"-20	1/4"	24,0	28,0	14,0	14	
		TCJNPTMA0904	10	3/8"	9/16"-18	1/4"	27,5	28,0	14,0	14	
		TCJNPTMA0906	10	3/8"	9/16"-18	3/8"	29,5	31,0	14,0	19	
		TCJNPTMA1206	12	1/2"	3/4"-16	3/8"	32,0	31,0	14,0	19	
		TCJNPTMA1208	12	1/2"	3/4"-16	1/2"	34,0	37,5	19,0	22	
		TCJNPTMA1406	14-15-16	5/8"	7/8"-14	3/8"	37,0	31,0	14,0	22	
		TCJNPTMA1408	14-15-16	5/8"	7/8"-14	1/2"	37,0	37,5	19,0	22	
		TCJNPTMA1412	14-15-16	5/8"	7/8"-14	3/4"	39,0	40,0	19,0	27	
		TCJNPTMA1708	18-20	3/4"	1"1/16-12	1/2"	42,0	37,5	19,0	22	
	TCJNPTMA1712	18-20	3/4"	1"1/16-12	3/4"	42,0	40,0	19,0	27		
	290	TCJNPTMA2112	25	1"	1"5/16-12	3/4"	46,0	40,0	19,0	27	
		TCJNPTMA2116	25	1"	1"5/16-12	1"	46,0	50,0	19,0	33	
	240	TCJNPTMA2616	28-30-32	1"1/4	1"5/8-12	1"	53,0	51,0	19,0	33	
		TCJNPTMA2620	28-30-32	1"1/4	1"5/8-12	1"1/4	53,0	60,0	24,0	41	
			TCJNPTMA3024	35-38	1"1/2	1"7/8-12	1"1/2	59,0	67,0	25,0	50

**ADATTATORE A "T" CENTRALE MASCHIO/FEMMINA FISSA**

Filetto Gas Cilindrico

**MALE/FEMALE STUD BRANCH TEE**

Thread BSP Parallel



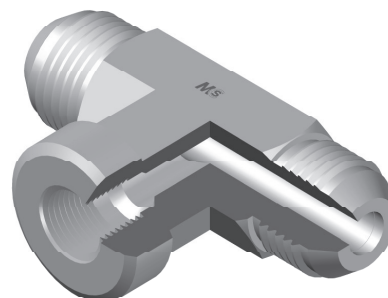
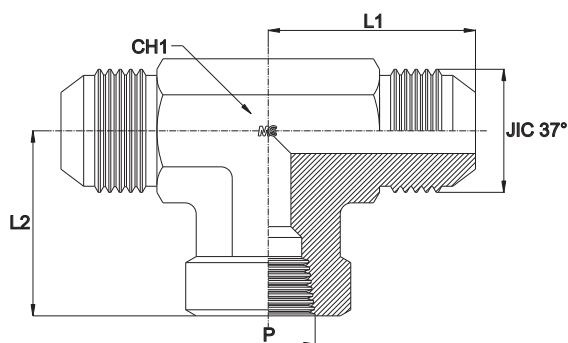
Serie Series	Bar W.P.	Codice Code	Ø Est. Tubo M Tube O.D. M	Ø Est. Tubo W Tube O.D. W	JIC 37°	G	L1	L2	CH1
UNIVERSALE UNIVERSAL	350	TCJBSPMFFA0702	6	1/4"	7/16"-20	1/8"	27,5	17,0	14
		TCJBSPMFFA0704	6	1/4"	7/16"-20	1/4"	29,0	22,5	19
		TCJBSPMFFA0802	8	5/16"	1/2"-20	1/8"	27,5	17,0	14
		TCJBSPMFFA0804	8	5/16"	1/2"-20	1/4"	29,0	22,5	19
		TCJBSPMFFA0902	10	3/8"	9/16"-18	1/8"	27,5	17,0	14
		TCJBSPMFFA0904	10	3/8"	9/16"-18	1/4"	31,0	22,5	19
		TCJBSPMFFA0906	10	3/8"	9/16"-18	3/8"	31,5	26,0	22
		TCJBSPMFFA1204	12	1/2"	3/4"-16	1/4"	32,0	22,5	19
		TCJBSPMFFA1206	12	1/2"	3/4"-16	3/8"	36,0	26,0	22
		TCJBSPMFFA1208	12	1/2"	3/4"-16	1/2"	31,5	26,0	27
		TCJBSPMFFA1408	14-15-16	5/8"	7/8"-14	1/2"	42,0	31,0	27
		TCJBSPMFFA1708	18-20	3/4"	1" 1/16-12	1/2"	42,0	31,0	27
	TCJBSPMFFA1712	18-20	3/4"	1" 1/16-12	3/4"	48,0	34,5	33	
	290	TCJBSPMFFA2116	25	1"	1" 5/16-12	1"	55,0	41,0	41
	240	TCJBSPMFFA2616	28-30-32	1" 1/4	1" 5/8-12	1"	55,0	41,0	41
		TCJBSPMFFA2620	28-30-32	1" 1/4	1" 5/8-12	1" 1/4	59,0	43,0	50
TCJBSPMFFA3020		35-38	1" 1/2	1" 7/8-12	1" 1/4	59,0	43,0	50	
TCJBSPMFFA3024		35-38	1" 1/2	1" 7/8-12	1" 1/2	73,0	53,0	65	

**ADATTATORE A "T" CENTRALE MASCHIO/FEMMINA FISSA**

Filetto NPT

**MALE/FEMALE STUD BRANCH TEE**

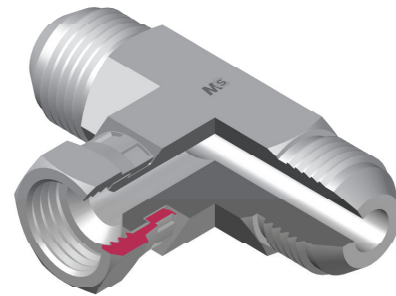
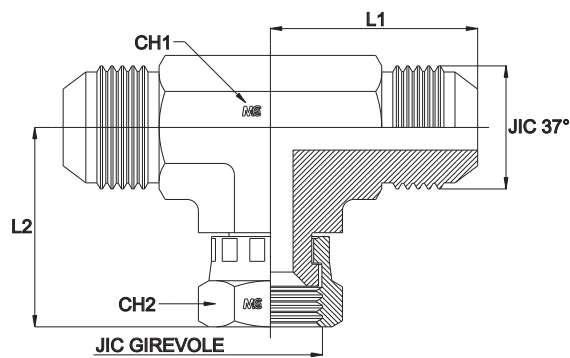
Thread NPT



Serie Series	Bar W.P.	Codice Code	Ø Est. Tubo M Tube O.D. M	Ø Est. Tubo W Tube O.D. W	JIC 37°	G	L1	L2	CH1
UNIVERSALE UNIVERSAL	350	TCJNPTMFFA0702	6	1/4"	7/16"-20	1/8"	27,5	17,0	14
		TCJNPTMFFA0704	6	1/4"	7/16"-20	1/4"	29,0	22,5	19
		TCJNPTMFFA0802	8	5/16"	1/2"-20	1/8"	27,5	17,0	14
		TCJNPTMFFA0804	8	5/16"	1/2"-20	1/4"	29,0	22,5	19
		TCJNPTMFFA0902	10	3/8"	9/16"-18	1/8"	27,5	17,0	14
		TCJNPTMFFA0904	10	3/8"	9/16"-18	1/4"	31,0	22,5	19
		TCJNPTMFFA0906	10	3/8"	9/16"-18	3/8"	31,5	26,0	22
		TCJNPTMFFA1204	12	1/2"	3/4"-16	1/4"	32,0	22,5	19
		TCJNPTMFFA1206	12	1/2"	3/4"-16	3/8"	36,0	26,0	22
		TCJNPTMFFA1208	12	1/2"	3/4"-16	1/2"	36,0	31,0	27
		TCJNPTMFFA1408	14-15-16	5/8"	7/8"-14	1/2"	42,0	31,0	27
		TCJNPTMFFA1708	18-20	3/4"	1" 1/16-12	1/2"	42,0	31,0	27
	TCJNPTMFFA1712	18-20	3/4"	1" 1/16-12	3/4"	48,0	34,5	33	
	290	TCJNPTMFFA2116	25	1"	1" 5/16-12	1"	55,0	41,0	41
240	TCJNPTMFFA2620	28-30-32	1" 1/4	1" 5/8-12	1,1/4"	59,0	43,0	50	
	TCJNPTMFFA3024	35-38	1" 1/2	1" 7/8-12	1,1/2"	73,0	53,0	65	

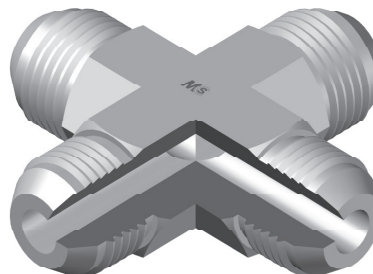
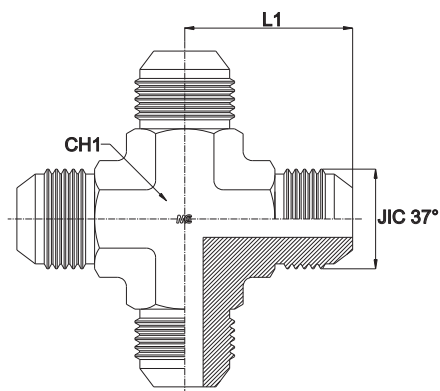


## ADATTATORE A "T" CENTRALE MASCHIO/FEMMINA GIREVOLE MALE/SWIVEL FEMALE STUD BRANCH TEE



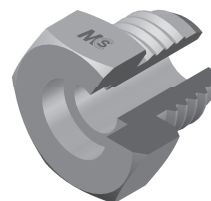
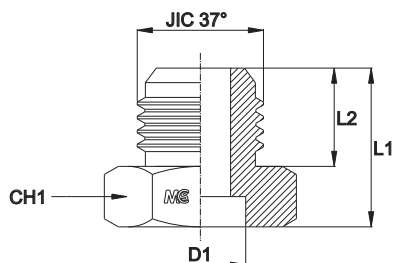
Serie Series	Bar W.P.	Codice Code	Ø Est. Tubo M Tube O.D. M	Ø Est. Tubo W Tube O.D. W	JIC 37°	L1	L2	CH1	CH2
UNIVERSALE UNIVERSAL	450	TCJMSFA07	6	1/4"	7/16"-20	23,0	25,2	12	17
		TCJMSFA08	8	5/16"	1/2"-20	24,0	25,9	14	17
	350	TCJMSFA09	10	3/8"	9/16"-18	27,5	30,8	14	19
		TCJMSFA12	12	1/2"	3/4"-16	32,0	33,9	19	24
		TCJMSFA14	14-15-16	5/8"	7/8"-14	37,0	40,9	22	27
	290	TCJMSFA17	18-20	3/4"	1"1/16-12	42,0	42,1	27	32
		TCJMSFA21	25	1"	1"5/16-12	46,0	49,7	33	38
	240	TCJMSFA26	28-30-32	1"1/4	1"5/8-12	53,0	56,3	41	50
		TCJMSFA30	35-38	1"1/2	1"7/8-12	59,0	64,2	50	55

## ADATTATORE A CROCE MASCHIO MALE EQUAL CROSS



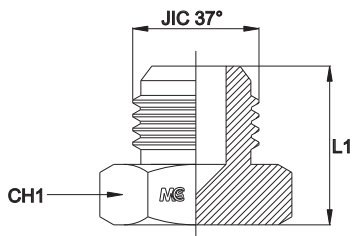
Serie Series	Bar W.P.	Codice Code	Ø Est. Tubo M Tube O.D. M	Ø Est. Tubo W Tube O.D. W	JIC 37°	L1	CH1
UNIVERSALE UNIVERSAL	450	CRJMA07	6	1/4"	7/16"-20	23,0	12
		CRJMA08	8	5/16"	1/2"-20	24,0	14
	350	CRJMA09	10	3/8"	9/16"-18	27,5	14
		CRJMA12	12	1/2"	3/4"-16	32,0	19
		CRJMA14	14-15-16	5/8"	7/8"-14	37,0	22
		CRJMA17	18-20	3/4"	1" 1/16-12	42,0	27
	290	CRJMA21	25	1"	1" 5/16-12	46,0	33
	240	CRJMA26	28-30-32	1" 1/4	1" 5/8-12	53,0	41
		CRJMA30	35-38	1" 1/2	1" 7/8-12	59,0	50
	105	CRJMA40	50	2"	2" 1/2-12	77,5	65

## ADATTATORE MASCHIO JIC A SALDARE (CON TASCA) JIC MALE SOCKETWELD ADAPTOR



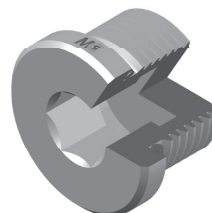
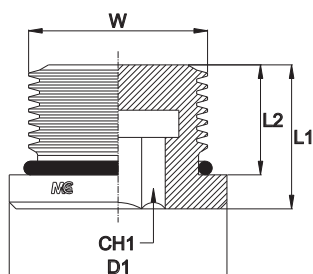
Serie Series	Bar W.P.	Codice Code	Ø Est. Tubo M Tube O.D. M	Ø Est. Tubo W Tube O.D. W	JIC 37°	L1	L2	D1	CH1
UNIVERSALE UNIVERSAL	450	JWMA07T06	6	1/4"	7/16"-20	21,0	14,0	6,0	14
		JWMA08T10	8	5/16"	1/2"-20	21,0	14,0	10,0	14
	350	JWMA09T10	10	3/8"	9/16"-18	21,9	14,1	10,0	17
		JWMA09T12	10	3/8"	9/16"-18	21,9	14,1	12,0	17
		JWMA12T12	12	1/2"	3/4"-16	24,3	16,7	12,0	22
		JWMA12T16	12	1/2"	3/4"-16	24,3	16,7	16,0	22
		JWMA12T18	12	1/2"	3/4"-16	24,3	16,7	18,0	22
		JWMA14T16	14-15-16	5/8"	7/8"-14	28,7	19,3	16,0	24
		JWMA14T18	14-15-16	5/8"	7/8"-14	28,7	19,3	18,0	24
		JWMA14T22	14-15-16	5/8"	7/8"-14	28,7	19,3	22,0	24
		JWMA17T18	18-20	3/4"	1" 1/16-12	33,1	21,9	18,0	30
		JWMA17T20	18-20	3/4"	1" 1/16-12	33,1	21,9	20,0	30
	JWMA17T25	18-20	3/4"	1" 1/16-12	33,1	21,9	25,0	30	
	290	JWMA21T25	25	1"	1" 5/16-12	33,9	23,1	25,0	36
		JWMA21T27	25	1"	1" 5/16-12	33,9	23,1	27,0	36
		JWMA21T32	25	1"	1" 5/16-12	33,9	23,1	32,0	36
	240	JWMA26T32	28-30-32	1" 1/4	1" 5/8-12	37,2	24,3	32,0	46
		JWMA26T38	28-30-32	1" 1/4	1" 5/8-12	36,3	23,4	38,0	46
JWMA30T38		35-38	1" 1/2	1" 7/8-12	42,5	27,5	38,0	50	

# TAPPO MASCHIO MALE HEAD PLUG



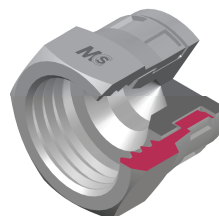
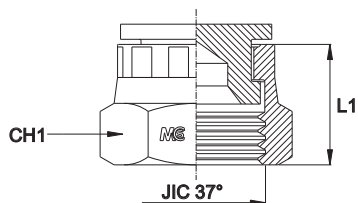
Serie Series	Bar W.P.	Codice Code	Ø Est. Tubo M Tube O.D. M	Ø Est. Tubo W Tube O.D. W	JIC 37°	L1	CH1
UNIVERSALE UNIVERSAL	450	JMHP07	6	1/4"	7/16"-20	21,0	14
		JMHP08	8	5/16"	1/2"-20	21,0	14
	350	JMHP09	10	3/8"	9/16"-18	21,9	17
		JMHP12	12	1/2"	3/4"-16	24,3	22
		JMHP14	14-15-16	5/8"	7/8"-14	28,7	24
	290	JMHP17	18-20	3/4"	1" 1/16-12	33,1	30
		JMHP21	25	1"	1" 5/16-12	33,9	36
	240	JMHP26	28-30-32	1" 1/4	1" 5/8-12	37,2	46
		JMHP30	35-38	1" 1/2	1" 7/8-12	42,5	50
	105	JMHP40	50	2"	2" 1/2-12	52,6	65

## TAPPO MASCHIO AD ESAGONO INCASSATO CON O'RING MALE PLUG INTERNAL HEXAGON WITH O'RING



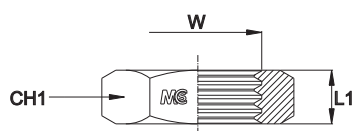
Serie Series	Bar W.P.	Codice Code	W	L1	L2	D1	CH1
UNIVERSALE UNIVERSAL	450	UNFMIP07	7/16"-20	12,0	9,1	14,0	6
		UNFMIP08	1/2"-20	12,0	9,1	16,0	6
	350	UNFMIP09	9/16"-18	12,7	10,0	17,5	6
		UNFMIP12	3/4"-16	14,8	11,1	22,0	8
		UNFMIP14	7/8"-14	16,5	12,7	25,5	10
		UNFMIP17	1" 1/16-12	19,5	15,1	32,0	12
	290	UNFMIP21	1" 5/16-12	19,5	15,1	38,0	17
		UNFMIP26	1" 5/8-12	19,5	15,1	48,0	22
	240	UNFMIP30	1" 7/8-12	19,5	15,1	54,0	22

## TAPPO FEMMINA GIREVOLE SWIVEL FEMALE PLUG



Serie Series	Bar W.P.	Codice Code	W	L1	CH1
UNIVERSALE UNIVERSAL	450	JSFHP07	7/16"-20	17,0	17
		JSFHP08	1/2"-20	17,0	17
	350	JSFHP09	9/16"-18	17,0	19
		JSFHP12	3/4"-16	21,0	24
		JSFHP14	7/8"-14	24,0	27
		JSFHP17	1" 1/16-12	26,0	32
	290	JSFHP21	1" 5/16-12	29,0	38
	240	JSFHP26	1" 5/8-12	31,0	50
		JSFHP30	1" 7/8-12	35,0	55
	105	JSFHP40	2" 1/2-12	-	-

## CONTRODADO PER PASSAPARETE LOCKNUT FOR BULKHEAD



Serie Series	Bar W.P.	Codice Code	W	L1	CH1
UNIVERSALE UNIVERSAL	450	JLN07	7/16"-20	7,1	17
		JLN08	1/2"-20	7,1	19
	350	JLN09	9/16"-18	7,1	22
		JLN12	3/4"-16	7,9	24
		JLN14	7/8"-14	9,1	30
	290	JLN17	1"1/16-12	10,4	36
		JLN21	1"5/16-12	10,4	41
	240	JLN26	1"5/8-12	10,4	50
		JLN30	1"7/8-12	10,4	55
	105	JLN40	2"1/2-12	10,4	70