

MCS

HYDRAULICS

Raccordi bassa pressione serie Unilock
Low pressure fittings Unilock series



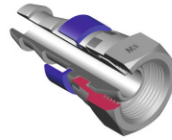
Collezione - Collection
2019

INDICE
INDEX

Pag. 10.01

ISTRUZIONI DI MONTAGGIO
ASSEMBLY INSTRUCTIONS

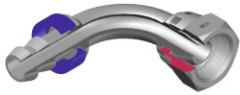
Pag. 10.02



FEMMINA GIR. GAS CONO 60° UNILOCK
BSP SWIVEL FEM. 60° CONE UNILOCK

Cod. BSPSF..UNI

Pag. 10.03



FEMM. GIR.90°GAS CONO 60° UNILOCK
90° BSP SWIVEL FEM.60°CONE UNILOCK

Cod. 90BSPSF..UNI

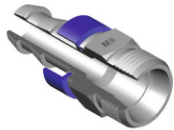
Pag. 10.03



FEMM.GIR. 24° SERIE LEGG. UNILOCK
METR.SWIVEL FEM. 24°CONE UNILOCK

Cod. ORMSFL..UNI

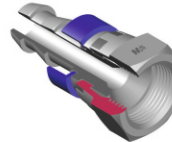
Pag. 10.04



MASCHIO METR.24° SER.LEG.UNILOCK
METRIC MALE 24°CONE UNILOCK

Cod. MML..UNI

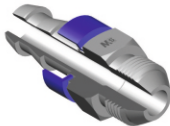
Pag. 10.04



FEMM.GIR.JIC SV.74° UNILOCK
JIC SWIVEL FEMALE 74° CONE UNILOCK

Cod. JSF..UNI

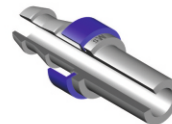
Pag. 10.05



MASCHIO JIC CONO 74° UNILOCK
JIC MALE 74° CONE UNILOCK

Cod. JM..UNI

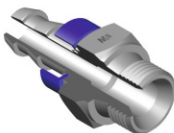
Pag. 10.05



FEMM.METR.TUB.SER.LEGG.UNILOCK
METRIC STAND. LIGHT TYPE UNILOCK

Cod. SL..UNI

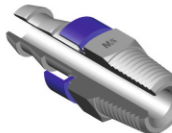
Pag. 10.06



MASCHIO GAS SV.60° UNILOCK
BSP MALE 60° CONE UNILOCK

Cod. BSPM..UNI

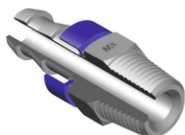
Pag. 10.06



MASCHIO SV.60° - NPT UNILOCK
MALE 60° CONE - NPT UNILOCK

Cod. NPTM..UNI

Pag. 10.07



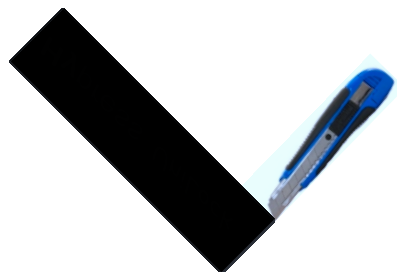
MASCHIO SV.60° GAS-CON. UNILOCK
MALE 60°CONE BSP-TAPER UNILOCK

Cod. BSPTM..UNI

Pag. 10.07

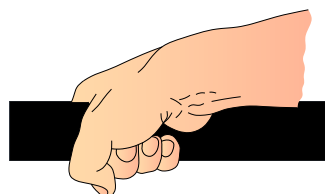
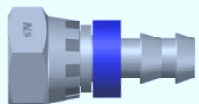
- ISTRUZIONI DI MONTAGGIO -

- ASSEMBLY INSTRUCTIONS -

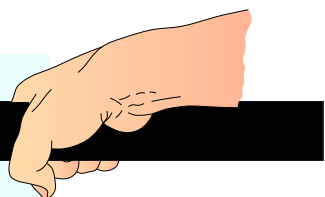
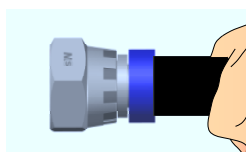


1. Tagliare il tubo a 90° alla lunghezza desiderata usando un taglierino.

1. Cut the hose squarely to desired length, using a cutter.



2. Appoggiare su di una superficie piana l'estremità del raccordo e, impugnando il tubo a circa due centimetri dall'estremità spingere fino a coprire con il collarino di plastica blu tutta l'estremità del tubo.



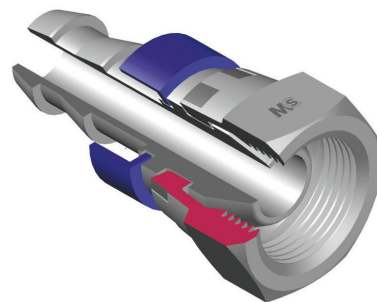
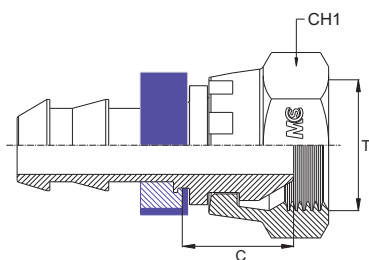
2. Place the fitting end on a flat surface, hold the hose at about 2 cm from its extremity and push it until the hose end will be fully covered by the blue plastic ring.

3. N.B. I raccordi Unilock possono essere utilizzati solo dopo l'inserimento completo del tubo fino al collarino di plastica blu.

3. Warning: unilock fittings can only be used if the hose has been fully inserted up to the blue ring.

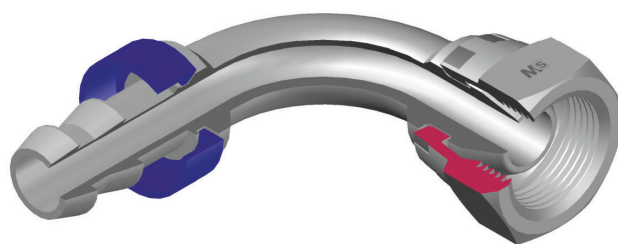
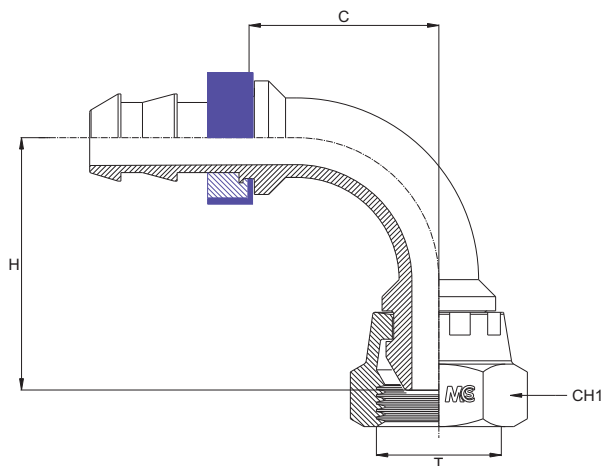


FEMMINA GIREVOLE GAS CONO 60° - *Unilock*
BSP SWIVEL FEMALE 60° CONE - *Unilock*
- DKR -



Bar W.P.	Codice Part Number	Filetto Thread	Ø Int. Tubo Inch. Hose I.D.	C Cut - Off	CH1
18	BSPSF0404 <i>Uni</i>	1/4"	1/4"	15,5	19
	BSPSF0606 <i>Uni</i>	3/8"	3/8"	15,5	22
15	BSPSF0808 <i>Uni</i>	1/2"	1/2"	19,0	27
	BSPSF1212 <i>Uni</i>	3/4"	3/4"	20,5	32
12	BSPSF1616 <i>Uni</i>	1"	1"	21,5	38

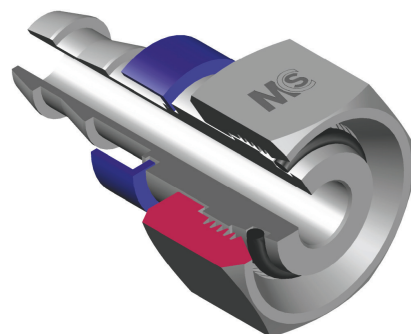
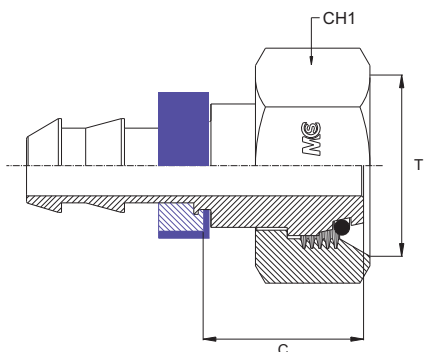
FEMMINA GIREVOLE A 90° GAS CONO 60° - *Unilock*
90° BSP SWIVEL FEMALE 60° CONE - *Unilock*
- DKR 90° -



Bar W.P.	Codice Part Number	Filetto Thread	Ø Int. Tubo Inch. Hose I.D.	C Cut - Off	H Drop	CH1
18	90BSPSF0404 <i>Uni</i>	1/4"	1/4"	22,0	27,5	19
	90BSPSF0606 <i>Uni</i>	3/8"	3/8"	31,0	36,5	22
15	90BSPSF0808 <i>Uni</i>	1/2"	1/2"	33,5	44,5	27
	90BSPSF1212 <i>Uni</i>	3/4"	3/4"	48,0	59,0	32
12	90BSPSF1616 <i>Uni</i>	1"	1"	62,0	74,5	38

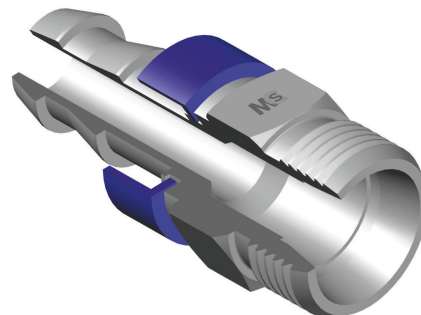
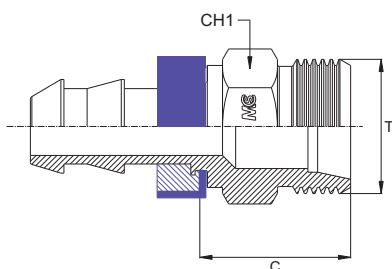
* Per misure non presenti si prega di contattare il nostro ufficio commerciale.
 * Other sizes available on request.

FEMMINA GIR. O'RING FIL. METRICO CONO 24° - SERIE LEGGERA - *Unilock*
O'RING METRIC SWIVEL FEMALE 24° CONE - LIGHT TYPE - *Unilock*
- DKOL -



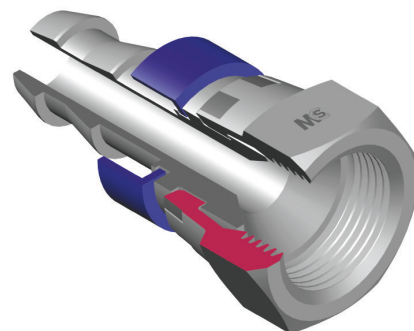
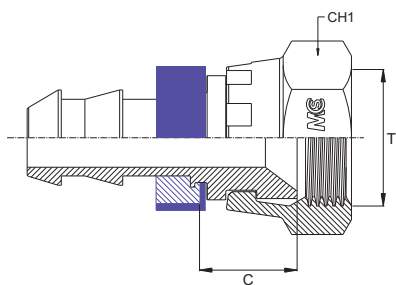
Bar W.P.	Codice Part Number	Filetto Thread	Ø Int. Tubo Inch. Hose I.D.	DIN 24°	C Cut - Off	CH1
18	ORMSFL0604 <i>Uni</i>	12x1,5	1/4"	06L	20,5	14
	ORMSFL0804 <i>Uni</i>	14x1,5	1/4"	08L	21,5	17
	ORMSFL1004 <i>Uni</i>	16x1,5	1/4"	10L	24,5	19
	ORMSFL1006 <i>Uni</i>	16x1,5	3/8"	10L	22,5	19
	ORMSFL1206 <i>Uni</i>	18x1,5	3/8"	12L	22,5	22
15	ORMSFL1508 <i>Uni</i>	22x1,5	1/2"	15L	23,0	27
	ORMSFL1808 <i>Uni</i>	26x1,5	1/2"	18L	28,0	32
	ORMSFL2212 <i>Uni</i>	30x2	3/4"	22L	31,5	36
12	ORMSFL2816 <i>Uni</i>	36x2	1"	28L	31,5	41

MASCHIO METRICO SVASATO 24° - SERIE LEGGERA - *Unilock*
METRIC MALE 24° CONE - LIGHT TYPE - *Unilock*
- CEL -



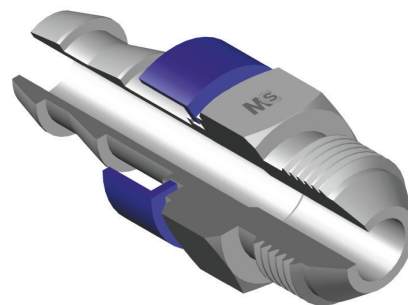
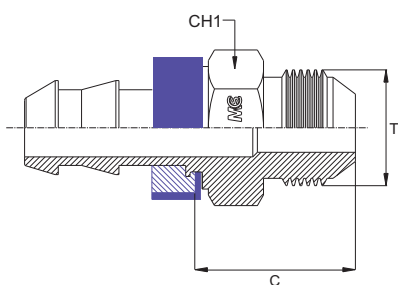
Bar W.P.	Codice Part Number	Filetto Thread	Ø Int. Tubo Inch. Hose I.D.	DIN 24°	C Cut - Off	CH1
18	MML0604 <i>Uni</i>	12x1,5	1/4"	06L	23,5	14
	MML0804 <i>Uni</i>	14x1,5	1/4"	08L	23,5	14
	MML1004 <i>Uni</i>	16x1,5	1/4"	10L	25,5	17
	MML1006 <i>Uni</i>	16x1,5	3/8"	10L	23,5	17
	MML1206 <i>Uni</i>	18x1,5	3/8"	12L	23,5	19
15	MML1508 <i>Uni</i>	22x1,5	1/2"	15L	24,5	22
	MML1808 <i>Uni</i>	26x1,5	1/2"	18L	27,0	27
	MML2212 <i>Uni</i>	30x2	3/4"	22L	28,0	30
12	MML2816 <i>Uni</i>	36x2	1"	28L	30,0	36

FEMMINA GIREVOLE JIC SVASATA 74° - *Unilock*
JIC SWIVEL FEMALE 74° CONE - *Unilock*
- DKJ -



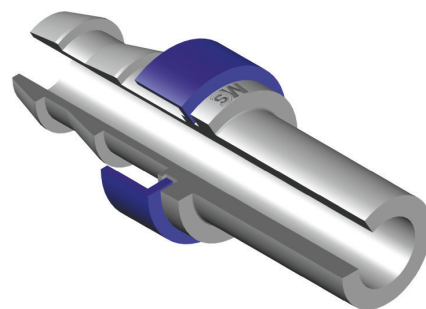
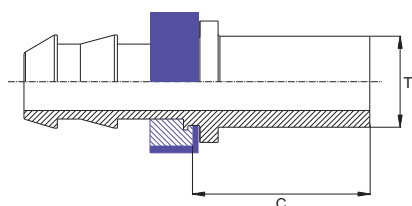
Bar W.P.	Codice Part Number	Filetto Thread	Ø Int. Tubo Inch. Hose I.D.	C Cut - Off	CH1
18	JSF0704 <i>Uni</i>	7/16"	1/4"	14,0	17
	JSF0804 <i>Uni</i>	1/2"	1/4"	14,0	17
	JSF0906 <i>Uni</i>	9/16"	3/8"	12,0	19
	JSF1206 <i>Uni</i>	3/4"	3/8"	15,5	24
15	JSF1208 <i>Uni</i>	3/4"	1/2"	15,5	24
	JSF1712 <i>Uni</i>	1" 1/16	3/4"	18,5	32
12	JSF2116 <i>Uni</i>	1" 5/16	1"	19,0	38

MASCHIO JIC CONO 74° - *Unilock*
JIC MALE 74° CONE - *Unilock*
- AGJ -



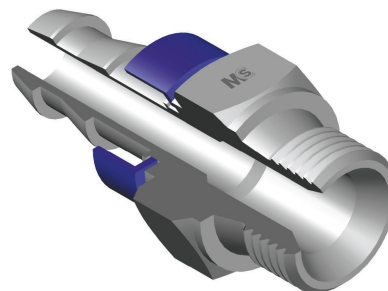
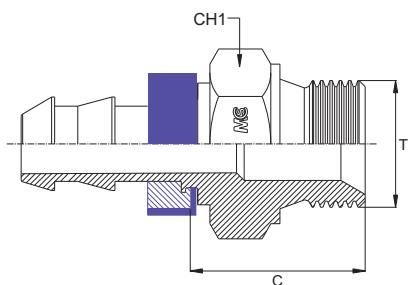
Bar W.P.	Codice Part Number	Filetto Thread	Ø Int. Tubo Inch. Hose I.D.	C Cut - Off	CH1
18	JM0704 <i>Uni</i>	7/16"	1/4"	26,0	14
	JM0804 <i>Uni</i>	1/2"	1/4"	27,0	14
	JM0906 <i>Uni</i>	9/16"	3/8"	24,8	17
	JM1206 <i>Uni</i>	3/4"	3/8"	27,0	22
15	JM1208 <i>Uni</i>	3/4"	1/2"	26,0	22
	JM1712 <i>Uni</i>	1" 1/16	3/4"	35,0	27
12	JM2116 <i>Uni</i>	1" 5/16	1"	38,5	36

FEMMINA METRICA TUBOLARE - SERIE LEGGERA - *Unilock*
METRIC STANDPIPE - LIGHT TYPE - *Unilock*
- BEL -



Bar W.P.	Codice Part Number	T Ø Tubo Ø Tube	Ø Int. Tubo Inch. Hose I.D.	C Cut - Off
18	SL0604 <i>Uni</i>	06 L	1/4"	28,0
	SL0804 <i>Uni</i>	08 L	1/4"	28,0
	SL1004 <i>Uni</i>	10 L	1/4"	28,0
	SL1006 <i>Uni</i>	10 L	3/8"	28,5
15	SL1206 <i>Uni</i>	12 L	3/8"	28,5
	SL1508 <i>Uni</i>	15 L	1/2"	29,0
	SL1808 <i>Uni</i>	18 L	1/2"	29,0
12	SL2212 <i>Uni</i>	22 L	3/4"	31,5
	SL2816 <i>Uni</i>	28 L	1"	34,5

MASCHIO BSP SVASATO A 60° - *Unilock*
BSP MALE PARALLEL 60° CONE - *Unilock*
- AGR -



Bar W.P.	Codice Part Number	Filetto Thread	Ø Int. Tubo Inch. Hose I.D.	C Cut - Off	CH1
18	BSPM0404 <i>Uni</i>	1/4"	1/4"	25,5	19
	BSPM0606 <i>Uni</i>	3/8"	3/8"	25,5	22
15	BSPM0808 <i>Uni</i>	1/2"	1/2"	28,5	27
	BSPM1212 <i>Uni</i>	3/4"	3/4"	32,0	32
12	BSPM1616 <i>Uni</i>	1"	1"	36,0	38

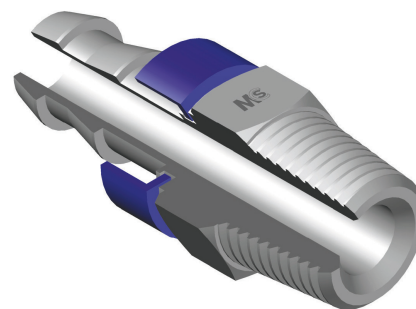
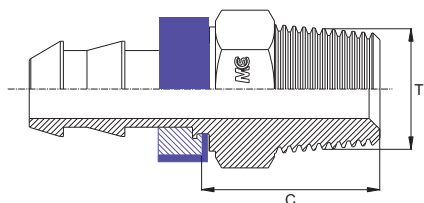
MASCHIO SVASATO 60° - Unilock

Filetto NPT

MALE 60° CONE - Unilock

Thread NPT

- AGN -



Bar W.P.	Codice Part Number	Filetto Thread	Ø Int. Tubo Inch. Hose I.D.	C Cut - Off	CH1
18	NPTM0404Uni	1/4"	1/4"	26,0	14
	NPTM0606Uni	3/8"	3/8"	26,0	19
15	NPTM0808Uni	1/2"	1/2"	30,5	22
	NPTM1212Uni	3/4"	3/4"	32,0	27
12	NPTM1616Uni	1"	1"	39,0	36

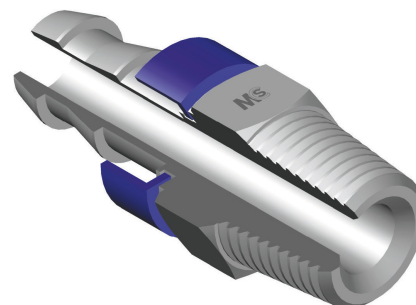
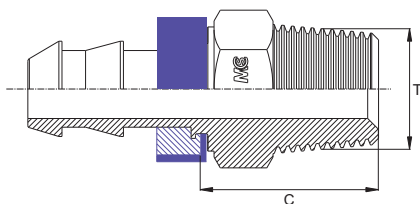
MASCHIO SVASATO 60° - Unilock

Filetto Gas Conico

MALE 60° CONE - Unilock

Thread BSP Taper

- AGR-K-



Bar W.P.	Codice Part Number	Filetto Thread	Ø Int. Tubo Inch. Hose I.D.	C Cut - Off	CH1
18	BSPTM0404Uni	1/4"	1/4"	25,5	14
	BSPTM0606Uni	3/8"	3/8"	26,0	19
15	BSPTM0808Uni	1/2"	1/2"	28,5	22
	BSPTM1212Uni	3/4"	3/4"	32,0	27
12	BSPTM1616Uni	1"	1"	39,0	36