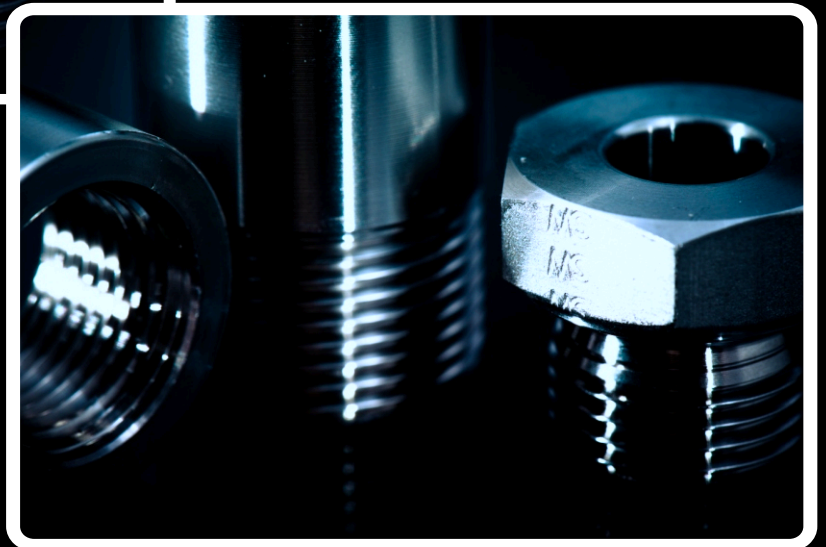
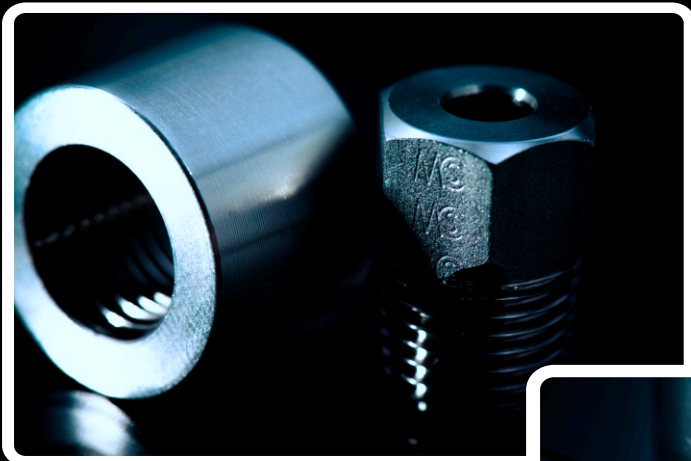


MCS

HYDRAULICS

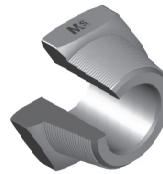
Raccordi a Saldare *Welding Fittings*



Collezione - Collection
2019

**INDICE
INDEX**

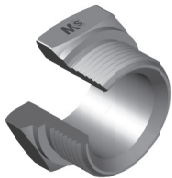
Pag. 11.1



**ADATTATORE DIRITTO MASCHIO
A SALDARE Filetto Gas Conico
MALE STRAIGHT WELDING ADAPTOR
Thread BSP Taper**

Cod. BSPTWM..

Pag. 11.2



**ADATTATORE DIRITTO MASCHIO
A SALDARE Filetto Gas Cilindrico
MALE STRAIGHT WELDING ADAPTOR
Thread BSP**

Cod. BSPWM..

Pag. 11.3



**ADATTATORE DIRITTO MASCHIO
A SALDARE Filetto Gas Cil. con Tasca
MALE STRAIGHT WELDING ADAPTOR
Thread BSP with groove**

Cod. BSPWM..T..

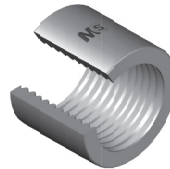
Pag. 11.4



**MANICOTTO DIRITTO MASCHIO
A SALDARE Filetto Gas Cilindrico
WELDING UNION MALE
Thread BSP**

Cod. BSPWME..

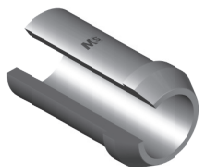
Pag. 11.5



**BORCHIA A SALDARE
Filetto Gas Cilindrico
WELDING STUD
Thread BSP**

Cod. BSG..

Pag. 11.6



**OGIVA A SALDARE SV.60°
Filetto Gas Cilindrico
WELD ON NIPPLE 60° CONE
Thread BSP**

Cod. OSG..

Pag. 11.7



**DADO LIBERO PER OGIVA A SALDARE
Filetto Gas Cilindrico
FREE NUT FOR WELD ON NIPPLE
Thread BSP**

Cod. DGL..

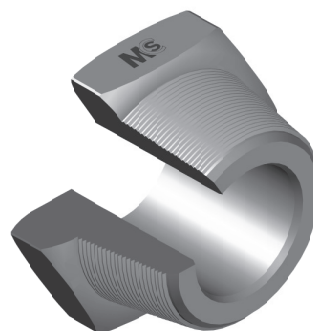
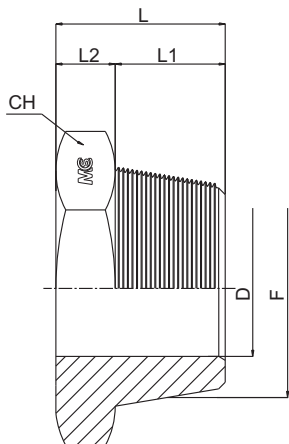
Pag. 11.8

ADATTATORE DIRITTO MASCHIO A SALDARE

Filetto Gas Conico

MALE STRAIGHT WELDING ADAPTOR

Thread BSP Taper



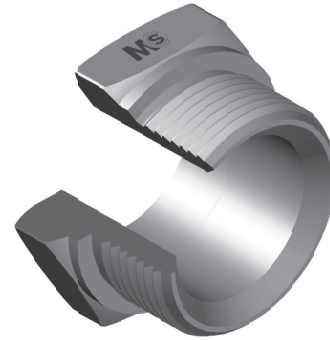
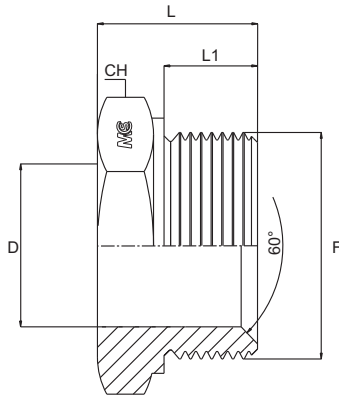
Bar W.P.	Codice Part Number	F	D	L1	L2	L	CH
300	BSPTWM02	1/8"	4,0	8,0	8,0	16,0	14
	BSPTWM04	1/4"	6,3	13,0	8,0	21,0	14
280	BSPTWM06	3/8"	8,0	14,0	8,0	22,0	19
200	BSPTWM08	1/2"	12,0	17,0	8,5	25,5	22
	BSPTWM12	3/4"	17,0	17,5	9,5	27,0	27
120	BSPTWM16	1"	22,0	22,0	11,0	33,0	36
105	BSPTWM20	1"1/4	30,0	24,0	12,0	36,0	46
	BSPTWM24	1"1/2	35,0	24,0	13,0	37,0	50
70	BSPTWM32	2"	44,0	25,0	14,0	39,0	65

ADATTATORE DIRITTO MASCHIO A SALDARE

Filetto Gas Cilindrico

MALE STRAIGHT WELDING ADAPTOR

Thread BSP



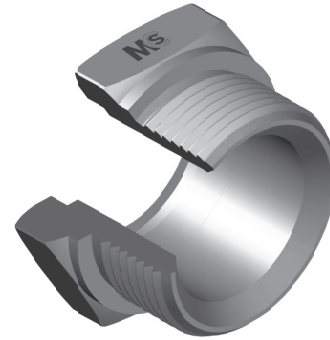
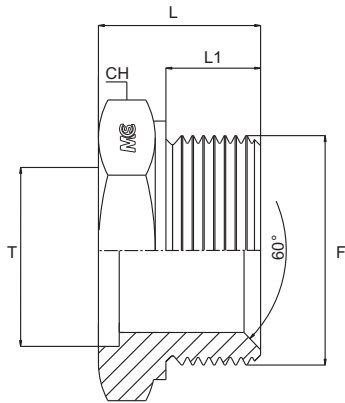
Bar W.P.	Codice Part Number	F	D	L1	L	CH
300	BSPWM02	1/8"	4,0	8,0	16,0	14
	BSPWM04	1/4"	6,3	11,0	19,5	19
	BSPWM06	3/8"	8,0	12,0	21,5	22
200	BSPWM08	1/2"	12,0	14,0	24,0	27
	BSPWM12	3/4"	17,0	16,0	27,0	32
120	BSPWM16	1"	22,0	19,0	32,0	41
105	BSPWM20	1" 1/4	30,0	20,0	33,5	50
	BSPWM24	1" 1/2	35,0	20,0	34,5	55
70	BSPWM32	2"	44,0	24,5	39,0	70

ADATTATORE DIRITTO MASCHIO A SALDARE

Filetto Gas Cilindrico con Tasca

MALE STRAIGHT WELDING ADAPTOR

Thread BSP with groove



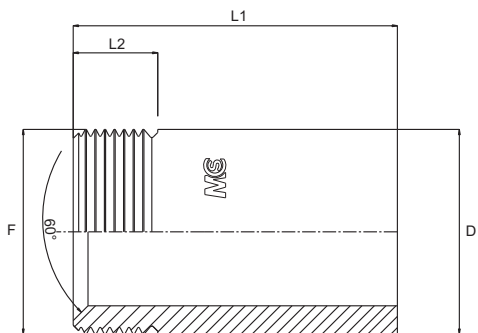
Bar W.P.	Codice Part Number	F	D	L1	T	L	CH
300	BSPWM02T08	1/8"	4,0	8,0	8,0	16,0	14
	BSPWM04T10	1/4"	6,3	11,0	10,0	19,5	19
	BSPWM06T12	3/8"	8,0	12,0	12,0	21,5	22
200	BSPWM08T16	1/2"	12,0	14,0	16,0	24,0	27
	BSPWM12T25	3/4"	17,0	16,0	25,0	27,0	32
120	BSPWM16T26	1"	22,0	19,0	26,0	32,0	41
105	BSPWM20T32	1" 1/4	30,0	20,0	32,0	33,5	50
	BSPWM24T38	1" 1/2	35,0	20,0	38,0	34,5	55
70	BSPWM32T46	2"	44,0	24,5	46,0	39,0	70

MANICOTTO DIRITTO MASCHIO A SALDARE

Filetto Gas Cilindrico

WELDING UNION MALE

Thread BSP



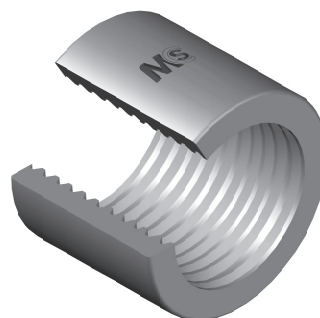
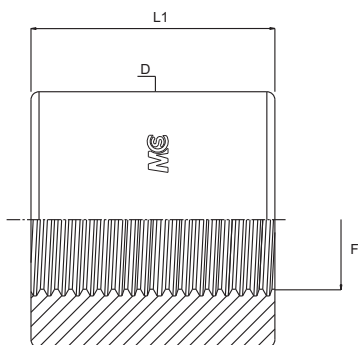
Bar W.P.	Codice Part Number	F	D	L1	L2
300	BSPWME02	1/8"	10,0	24,0	9,5
	BSPWME04	1/4"	14,0	25,0	13,0
	BSPWME06	3/8"	17,0	35,0	15,0
200	BSPWME08	1/2"	21,0	35,0	15,0
	BSPWME12	3/4"	28,0	36,0	17,0
120	BSPWME16	1"	34,0	41,0	18,0
105	BSPWME20	1" 1/4	42,0	45,0	20,0
	BSPWME24	1" 1/2	48,0	50,0	20,0
70	BSPWME32	2"	60,0	50,0	24,5

BORCHIA A SALDARE

Filetto Gas Cilindrico

WELDING STUD

Thread BSP



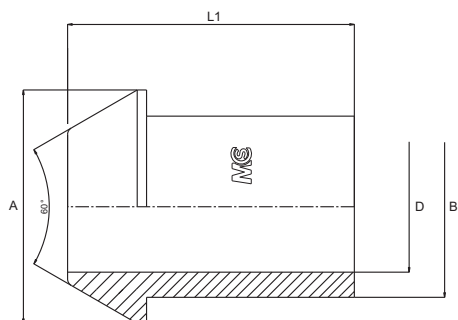
Bar W.P.	Codice Part Number	F	L1	D
300	BSG02	1/8"	14,0	20,0
	BSG04	1/4"	16,0	22,0
	BSG06	3/8"	17,0	26,0
200	BSG08	1/2"	18,0	30,0
	BSG12	3/4"	20,0	38,0
120	BSG16	1"	26,0	45,0
105	BSG20	1" 1/4	26,0	55,0
	BSG24	1" 1/2	30,0	62,0
70	BSG32	2"	30,0	70,0

OGIVA A SALDARE SV.60°

Filetto Gas Cilindrico

WELD ON NIPPLE 60° CONE

Thread BSP



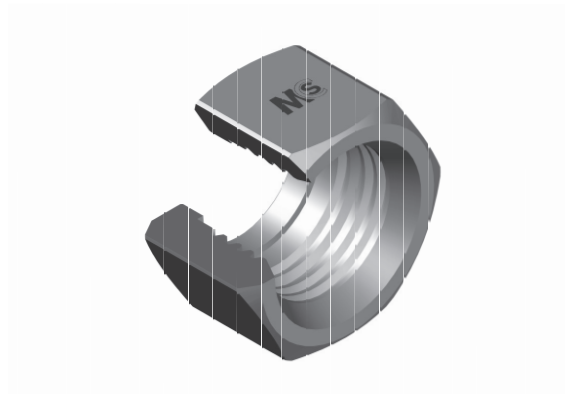
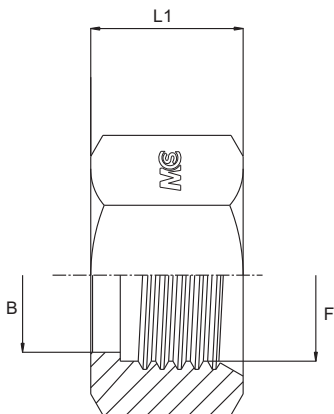
Bar W.P.	Codice Part Number	A	B	D	L1
300	OSG02	-	-	-	-
	OSG04	11,5	9,6	4,0	27,0
	OSG06	14,5	12,8	7,0	28,0
200	OSG08	18,6	15,8	9,5	28,0
	OSG12	24,1	21,8	15,0	34,0
120	OSG16	30,0	26,7	20,0	36,0
105	OSG20	38,8	33,5	29,0	37,0
	OSG24	44,4	40,9	32,0	37,0
70	OSG32	56,2	53,7	40,0	40,0

DADO LIBERO PER OGIVA A SALDARE

Filetto Gas Cilindrico

FREE NUT FOR WELD ON NIPPLE

Thread BSP



Bar W.P.	Codice Part Number	F	B	L1
300	DGL02	1/8"	-	-
	DGL04	1/4"	9,8	14,5
	DGL06	3/8"	13,0	17,0
200	DGL08	1/2"	16,0	18,0
	DGL12	3/4"	22,0	20,0
120	DGL16	1"	28,1	22,0
105	DGL20	1" 1/4	34,0	23,0
	DGL24	1" 1/2	41,2	23,0
70	DGL32	2"	54,2	32,0