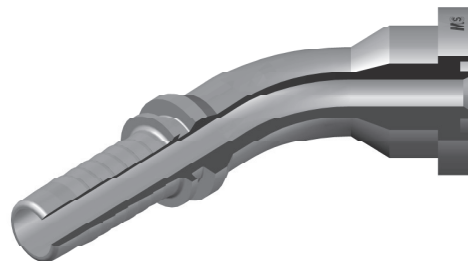
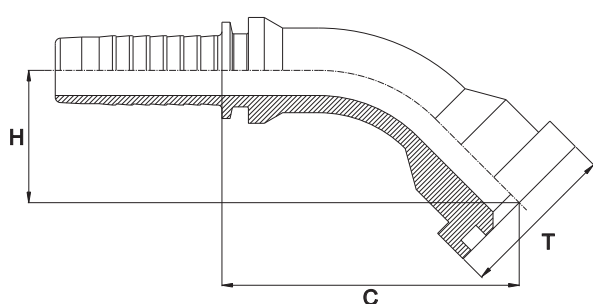


**FLANGIA 45° SAE SERIE 3000 PSI**  
**45° SAE FLANGE 3000 PSI**  
**- SFL 45° -**



Bar W.P.	Codice Part Number	Flangia Flange	Ø Int. Tubo Inch. Hose I.D.	T	C Cut - Off	H Drop
350	45SF30000808	1/2"	1/2"	30,2	63,5	23,0
	45SF30001208	3/4"	1/2"	38,1	65,7	24,0
	45SF30001210	3/4"	5/8"	38,1	69,0	37,0
	45SF30001212	3/4"	3/4"	38,1	81,0	31,0
	45SF30001612	1"	3/4"	44,5	81,5	31,5
280	45SF30001616	1"	1"	44,5	102,5	32,0
	45SF30002016	1"1/4	1"	50,8	-	-
210	45SF30002020	1"1/4	1"1/4	50,8	132,5	39,0
	45SF30002420	1"1/2	1"1/4	60,3	-	-
185	45SF30002424	1"1/2	1"1/2	60,3	171,0	46,0
-	45SF30003224*	2"	1"1/2	71,4	-	-
170	45SF30003232	2"	2"	71,4	-	-
-	45SF30004040*	2"1/2	2"1/2	84,1	-	-

\* Saldata

\* Welded