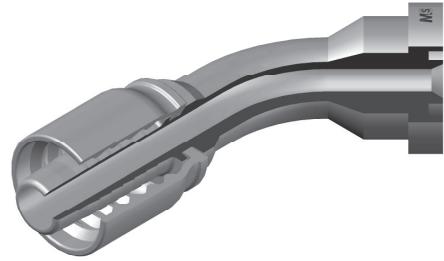
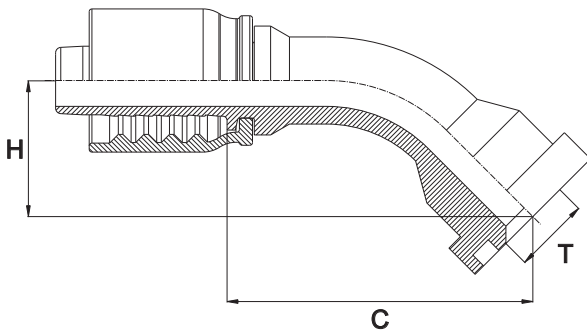


FLANGIA 45° SAE SERIE 3000 PSI
45° SAE FLANGE 3000 PSI
- SFL 45° -



Bar W.P.	Codice Part Number	Flangia Flange	Ø Int. Tubo Inch. Hose I.D.	T	C Cut - Off	H Drop
350	45SF30000808PC	1/2"	1/2"	30,2	63,5	23,0
	45SF30001208PC	3/4"	1/2"	38,1	65,7	24,0
	45SF30001210PC	3/4"	5/8"	38,1	69,0	37,0
	45SF30001212PC	3/4"	3/4"	38,1	81,0	31,0
	45SF30001612PC	1"	3/4"	44,5	81,5	31,5
280	45SF30001616PC	1"	1"	44,5	102,5	32,0
	45SF30002016PC	1"1/4	1"	50,8	-	-
210	45SF30002020PC	1"1/4	1"1/4	50,8	132,5	39,0
	45SF30002420PC	1"1/2	1"1/4	60,3	-	-
185	45SF30002424PC	1"1/2	1"1/2	60,3	171,0	46,0