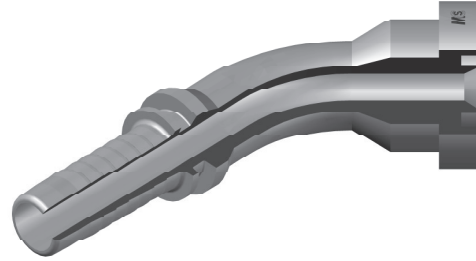
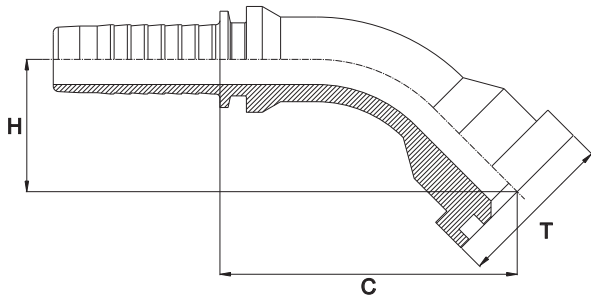


FLANGIA 45° SAE SERIE 6000 PSI
45° SAE FLANGE 6000 PSI
- SFS 45° -



Bar W.P.	Codice Part Number	Flangia Flange	Ø Int. Tubo Inch. Hose I.D.	T	C Cut - Off	H Drop
415	45SF60000808	1/2"	1/2"	31,7	67,0	25,0
	45SF60001208	3/4"	1/2"	41,3	-	-
350	45SF60001212	3/4"	3/4"	41,3	83,5	31,0
	45SF60001612	1"	3/4"	47,6	-	-
280	45SF60001616	1"	1"	47,6	-	-
	45SF60002016	1"1/4	1"	54,0	-	-
210	45SF60002020	1"1/4	1"1/4	54,0	128,5	36,0
	45SF60002420	1"1/2	1"1/4	63,5	-	-
185	45SF60002424	1"1/2	1"1/2	63,5	-	-
-	45SF60003224*	2"	1"1/2	79,4	-	-
172	45SF60003232	2"	2"	79,4	-	-

* Saldata

* Welded