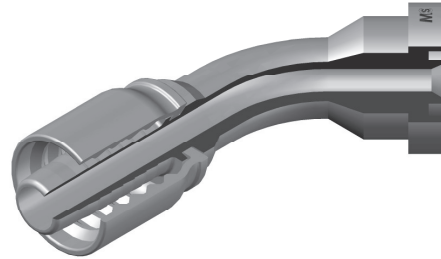
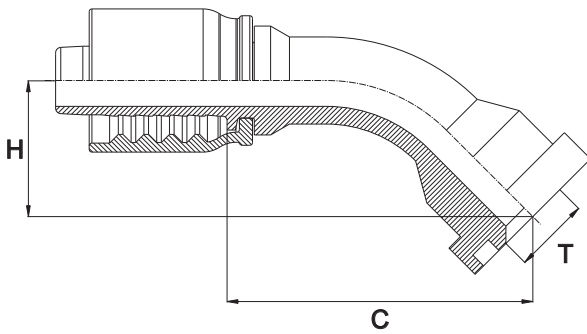


**FLANGIA 45° SAE SERIE 6000 PSI**  
**45° SAE FLANGE 6000 PSI**  
**- SFS 45° -**



Bar W.P.	Codice Part Number	Flangia Flange	Ø Int. Tubo Inch. Hose I.D.	T	C Cut - Off	H Drop
415	45SF60000808PC	1/2"	1/2"	31,7	67,0	25,0
	45SF60001208PC	3/4"	1/2"	41,3	-	-
350	45SF60001212PC	3/4"	3/4"	41,3	83,5	31,0
	45SF60001612PC	1"	3/4"	47,6	-	-
280	45SF60001616PC	1"	1"	47,6	-	-
	45SF60002016PC	1"1/4	1"	54,0	-	-
210	45SF60002020PC	1"1/4	1"1/4	54,0	128,5	36,0
	45SF60002420PC	1"1/2	1"1/4	63,5	-	-
185	45SF60002424PC	1"1/2	1"1/2	63,5	-	-