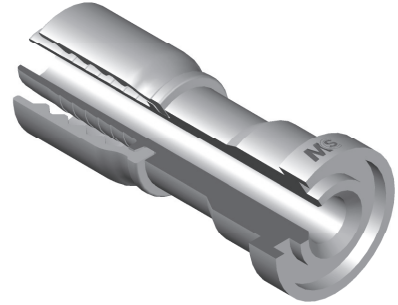
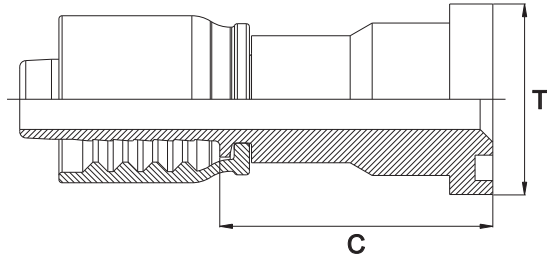


FLANGIA SAE SERIE 3000 PSI
SAE STRAIGHT FLANGE 3000 PSI
- SFL -



Bar W.P.	Codice Part Number	Flangia Flange	Ø Int. Tubo Inch. Hose I.D.	T	C Cut - Off
350	SSF30000808PC	1/2"	1/2"	30,2	43,0
	SSF30001208PC	3/4"	1/2"	38,1	47,0
	SSF30001210PC	3/4"	5/8"	38,1	48,5
	SSF30001212PC	3/4"	3/4"	38,1	47,5
	SSF30001610PC	1"	5/8"	44,5	54,5
	SSF30001612PC	1"	3/4"	44,5	53,5
280	SSF30001616PC	1"	1"	44,5	54,5
	SSF30002016PC	1"1/4	1"	50,8	56,5
210	SSF30002020PC	1"1/4	1"1/4	50,8	57,5
280	SSF30002416PC	1"1/2	1"	60,3	56,5
210	SSF30002420PC	1"1/2	1"1/4	60,3	62,5
185	SSF30002424PC	1"1/2	1"1/2	60,3	63,0