

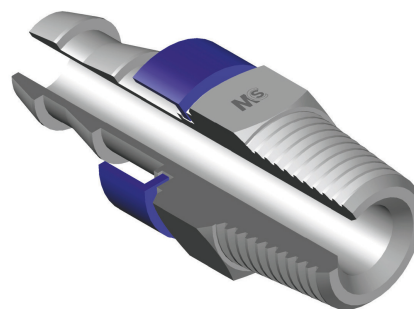
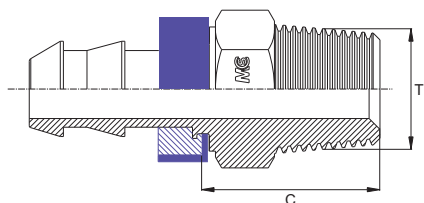
**MASCHIO SVASATO 60° - Unilock**

Filetto NPT

**MALE 60° CONE - Unilock**

Thread NPT

- AGN -



| Bar W.P. | Codice Part Number | Filetto Thread | Ø Int. Tubo Inch. Hose I.D. | C Cut - Off | CH1 |
|----------|--------------------|----------------|-----------------------------|-------------|-----|
| 18       | NPTM0404Uni        | 1/4"           | 1/4"                        | 26,0        | 14  |
|          | NPTM0606Uni        | 3/8"           | 3/8"                        | 26,0        | 19  |
| 15       | NPTM0808Uni        | 1/2"           | 1/2"                        | 30,5        | 22  |
|          | NPTM1212Uni        | 3/4"           | 3/4"                        | 32,0        | 27  |
| 12       | NPTM1616Uni        | 1"             | 1"                          | 39,0        | 36  |

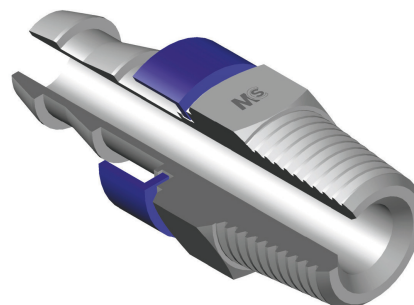
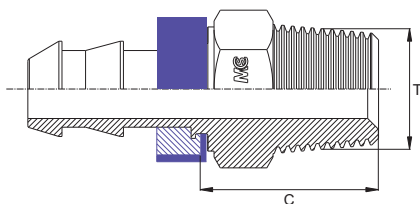
**MASCHIO SVASATO 60° - Unilock**

Filetto Gas Conico

**MALE 60° CONE - Unilock**

Thread BSP Taper

- AGR-K-



| Bar W.P. | Codice Part Number | Filetto Thread | Ø Int. Tubo Inch. Hose I.D. | C Cut - Off | CH1 |
|----------|--------------------|----------------|-----------------------------|-------------|-----|
| 18       | BSPTM0404Uni       | 1/4"           | 1/4"                        | 25,5        | 14  |
|          | BSPTM0606Uni       | 3/8"           | 3/8"                        | 26,0        | 19  |
| 15       | BSPTM0808Uni       | 1/2"           | 1/2"                        | 28,5        | 22  |
|          | BSPTM1212Uni       | 3/4"           | 3/4"                        | 32,0        | 27  |
| 12       | BSPTM1616Uni       | 1"             | 1"                          | 39,0        | 36  |