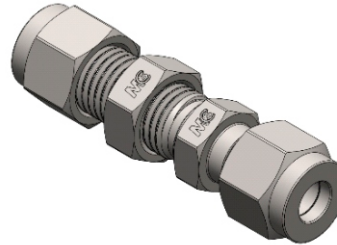
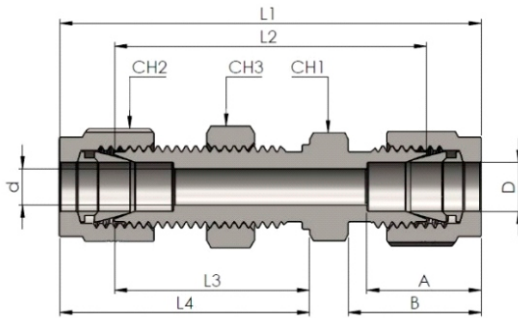


Passaparete Intermedio

Union Bulkhead



Connects Fractional Tubes

Codice Part Number	D		d	CH1, CH3		CH2		A	B	L1	L2	L3	L4	Diametro Foro pannello	Spessore Max. Pannello
	in	mm		in	mm	in	mm							Panel Hole Drill Size	Panel Max Thickness
SUBK02	1/8	3,17	2,28	9/16	14,28	7/16	11,11	12,70	15,24	51,30	38,10	24,63	31,24	8,33	12,70
SUBK03	3/16	4,76	3,04	9/16	14,28	1/2	12,70	13,71	16,00	53,59	40,38	25,40	32,00	9,92	12,70
SUBK04	1/4	6,35	4,82	5/8	15,87	9/16	14,28	15,24	17,78	57,65	42,92	26,16	33,52	11,50	10,16
SUBK05	5/16	7,93	6,35	11/16	17,46	5/8	15,87	16,25	18,54	60,70	45,97	28,44	35,81	13,09	11,17
SUBK06	3/8	9,52	7,11	3/4	19,05	11/16	17,46	16,76	19,30	62,23	47,49	29,46	36,83	14,68	11,17
SUBK08	1/2	12,70	10,41	15/16	23,81	7/8	22,22	22,86	21,84	71,12	50,80	31,75	41,91	19,44	12,70
SUBK10	5/8	15,87	12,70	1.1/16	26,98	1	25,40	24,38	21,84	72,64	52,32	32,51	42,67	22,62	12,70
SUBK12	3/4	19,05	15,74	1.3/16	30,16	1.1/8	28,57	24,38	21,84	78,99	58,67	37,33	47,49	25,79	16,76
SUBK14	7/8	22,22	18,28	1.3/8	34,92	1.1/4	31,75	25,90	21,84	84,58	64,26	42,92	53,08	28,97	19,05
SUBK16	1	25,40	22,35	1.5/8	41,27	1.1/2	38,10	31,24	26,41	95,75	71,37	45,21	57,40	33,73	19,05
SUBK20	1.1/4	31,75	27,68	1.7/8	47,62	1.7/8	47,62	41,14	38,86	123,19	78,99	47,75	69,85	41,67	19,05
SUBK24	1.1/2	38,10	34,03	2.1/4	57,16	2.1/4	57,15	50,03	45,21	139,19	84,83	49,27	76,45	49,61	19,05
SUBK32	2	50,80	45,97	2.3/4	69,85	3	76,20	67,56	62,73	180,34	105,66	56,38	93,72	67,07	19,05

Connects Metric Tubes

Codice Part Number	D	d	CH1	CH2	CH3	A	B	L1	L2	L3	L4	Diametro foro pannello	Spessore Max. Pannello
												Panel Hole Drill Size	Panel Max Thickness
SUBK03M	3	2,40	14	11	14	12,9	15,3	51,3	38,1	24,6	31,2	8,3	12,7
SUBK04M	4	2,40	14	12	14	13,7	16,1	53,6	40,4	25,4	32,0	9,9	12,7
SUBK06M	6	4,80	17	14	17	15,3	17,7	57,7	42,9	26,2	33,6	11,5	10,2
SUBK08M	8	6,40	19	16	17	16,2	18,6	61,0	46,0	28,6	36,1	13,1	11,2
SUBK10M	10	7,90	22	19	22	17,2	19,5	63,7	48,5	29,4	37,0	16,2	11,2
SUBK12M	12	9,50	24	22	24	22,8	22,0	71,0	50,8	31,8	41,9	19,5	12,7
SUBK15M	15	11,90	27	25	27	24,4	22,0	72,5	52,3	32,5	42,6	22,8	12,7
SUBK16M	16	12,70	27	25	27	24,4	22,0	72,5	52,3	32,5	42,6	22,8	12,7
SUBK18M	18	15,10	30	30	30	24,4	22,0	78,9	58,7	37,3	47,4	26,0	16,8
SUBK20M	20	15,90	36	32	36	26,0	22,0	84,5	64,3	42,9	53,0	29,0	17,0
SUBK22M	22	18,30	36	32	36	26,0	22,0	84,5	64,3	42,9	53,0	29,0	19,1
SUBK25M	25	21,80	41	38	41	31,3	26,5	95,9	71,4	45,2	57,5	33,7	19,1
SUBK32M	32	28,60	50	50	50	42,0	41,6	128,3	82,3	49,5	72,5	42,5	19,0
SUBK38M	38	33,70	60	60	60	49,4	47,9	144,6	89,4	51,5	79,1	50,5	19,0