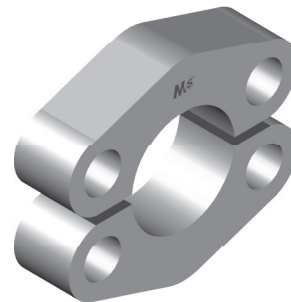
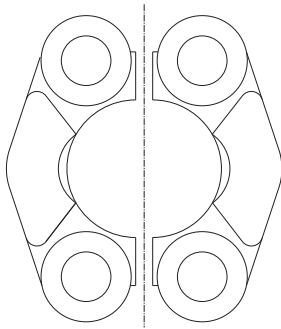
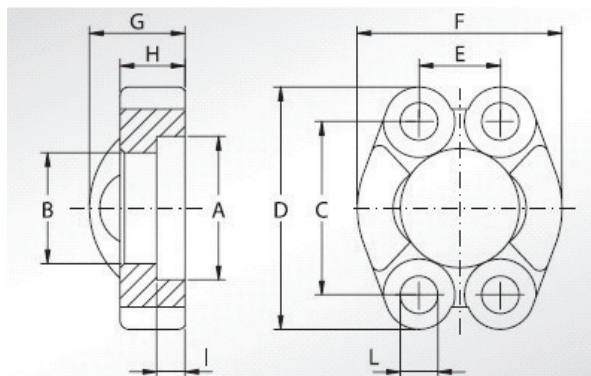


SEMI FLANGIA TAGLIATA SAE 3000 SPLIT FLANGE SAE 3000 - CUT



Codice Part Number	Per Flangia Da: For Flange By:
SF300008	1/2"
SF300012	3/4"
SF300016	1"
SF300020	1" 1/4
SF300024	1" 1/2
SF300032	2"



DIMENSIONI TECNICHE - TECHNICAL DATA											
CODICE PART	maximum Kg/cm ²	A MM	B MM	C MM	D MM	E MM	F MM	G MM	H MM	I MM	L MM
SF300008	345	30,96	24,26	38,10	54,0	17,48	45,60	19,00	13,00	6,22	8,75
SF300012	345	38,89	32,13	47,63	65,0	22,23	51,80	22,00	14,00	6,22	10,75
SF300016	345	45,24	38,48	52,37	70,0	26,19	58,40	24,00	16,00	7,49	10,75
SF300020	276	51,59	43,69	58,72	79,0	30,18	72,60	22,00	14,00	7,49	12,00
SF300024	207	61,09	50,80	69,85	94,0	35,71	82,20	25,00	16,00	7,49	13,50
SF300032	207	72,24	62,74	77,77	102,0	42,88	96,40	26,00	16,00	9,02	13,50